

ICE BREAKER QUESTIONS

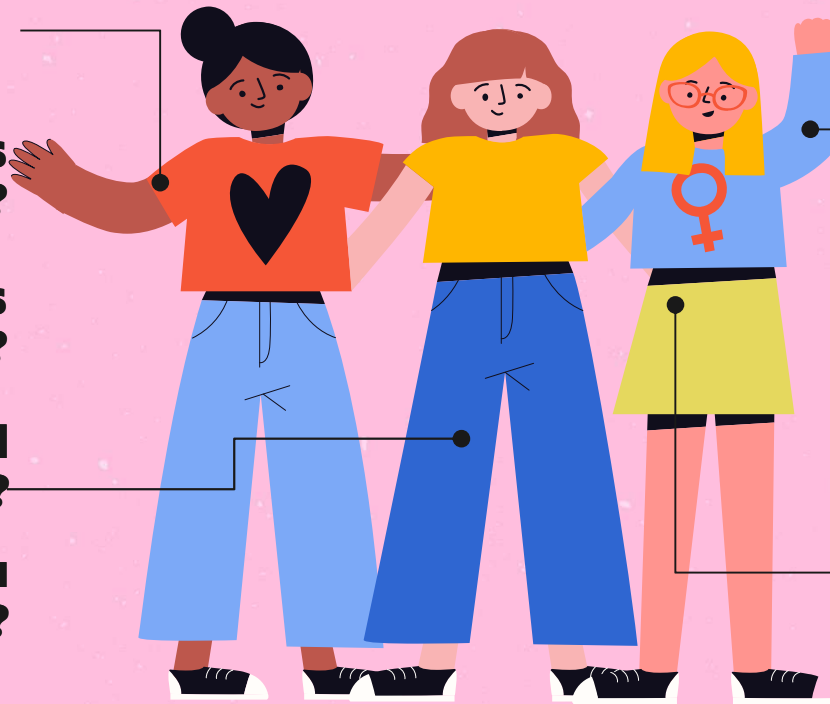
★ **How many years have you been a P.E.O.?**

★ **How many chapters have you been in?**

Which committees have you been on?

Who has participated in an initiation?

Are you more of a star or daisy sister?



Who has a relative who is a P.E.O.?

Who has brought someone into P.E.O.?

Who has served as a chapter officer?

Has anyone gone inactive or considered going inactive?