

THE P.E.O.

SEPTEMBER-OCTOBER

# RECORD

10

## 2010 Bed & Breakfast Listing

Let's Go Find the Others!  
What's Cooking at Cottey



Philanthropic Educational Organization



# officers of INTERNATIONAL CHAPTER

---

<b>President</b>	<b>Elizabeth E. Garrels</b>
<b>First Vice President</b>	<b>Susan Reese Sellers</b>
<b>Second Vice President</b>	<b>Maria T. Baseggio</b>
<b>Organizer</b>	<b>Beth Ledbetter</b>
<b>Recording Secretary</b>	<b>Sue Baker</b>

## **Standing Appointments**

### **Administrative Staff**

<b>Chief Executive Officer</b>	<b>Anne Pettygrove</b> <i>ceo@peodsm.org</i>
<b>Director of Finance/Treasurer</b>	<b>Kathy A. Soppe</b> <i>ksoppe@peodsm.org</i>
<b>Director of Communications/Historian</b>	<b>Joyce C. Perkins</b> <i>jperkins@peodsm.org</i>

*The administrative staff has offices at the P.E.O. Executive Office.*

### **Cottey College**

President, Judy Robinson Rogers, Ph.D., 1000 West Austin Blvd., Nevada, MO 64772

## **Boards of Trustees and Standing Committees**

### **Cottey College**

**Chairman, Susan Santoli**  
**Vice Chairman, Karen Browne**  
**Julie Wilson**  
**Donald Cunningham**  
**Nancy Gwinn**  
**Kathleen Wysong**  
**Janet Brown**  
**Chauncey E. Brummer**  
**Greg Hoffman**  
**Janet M. Hansen**  
**Kathy A. Leffler**

### **P.E.O. Educational Loan Fund**

**Chairman, Kathleen Bennett**  
**Vice Chairman, Mary Staahl**  
**Deborah Skinner**  
**Joan Kirk**  
**Cathy Allen**  
**Paula Rueb**

### **P.E.O. International Peace Scholarship Fund**

**Chairman, Barbara Hoffman**  
**Sandra Webster**  
**Linda Spence**

### **P.E.O. Program for Continuing Education**

**Chairman, Cathy Moss**  
**Mary Ann Langston**  
**Teri S. Aitchison**

### **P.E.O. Scholar Awards**

**Chairman, Diane Todd**  
**Virginia Petersen**  
**Susan Major**

### **P.E.O. STAR Scholarship**

**Chairman, Patricia Anderson**  
**Susan Howard**  
**Ann Davidson**

### **P.E.O. Foundation**

**Chairman, Toots Green**  
**Patricia Brolin-Ribi**  
**Barbara Legge**

### **Finance Committee**

**Chairman, Kathie Herkelmann**  
**Nancy Martin**  
**Alix Smith**

### **Audit Committee**

**Chairman, Kathie Herkelmann**  
**Nancy Martin**  
**Alix Smith**

### **Study and Research Committee**

**Chairman, Kay Duffield**  
**Vice Chairman, Mary Stroh**  
**Barbara Rosi**  
**Elizabeth McFarland**  
**Libby Stucky**  
**Leann Drullinger**

### **Nominating Committee**

**Chairman, Sue Gates**  
**Barbara James**  
**Sandy Booth**  
**Ann Conway**  
**Susan Lombard**

### **Special Appointment**

**Parliamentarian, Mary Short**

### **Special Committee for Membership Advancement**

**Jane Attaway**  
**Carolyn Gilstrap**  
**Judy Haar**  
**Ellen Knox**  
**Pamela Kregg**

### **Special Committee to Study P.E.O. Ceremonies and Meeting Procedure**

**Susan Reese Sellers**  
**Janet D. Litterer**  
**Pamela Jean Estes**  
**Deborah H. Taylor**  
**Frances D. Becque**  
**Donita Mitchell**  
**Jill Brink-Lemnah**

## **To Reach P.E.O.**

**Mail** *P.E.O. Executive Office, 3700 Grand Ave., Des Moines, IA 50312-2899*

**Phone** *515-255-3153*

**Fax** *515-255-3820*

**Web** *peointernational.org (Go to Members Login, enter username and password, then click Contact Us.)*

## **To Reach Cottey College**

**Mail** *1000 W Austin Blvd., Nevada, Missouri 64772-2790*

**Phone** *417-667-8181*

**Fax** *417-667-8103*

**Email** *peorelations@cottey.edu*

**Web** *cottey.edu*

## **To Reach the P.E.O. Record or Submit Material:**

*Becky Frazier, Editor*

**Mail** *3700 Grand Ave., Des Moines, Iowa 50312*

**Phone** *515-255-3153*

**Fax** *515-255-3820*

**Email** *bfrazier@peodsm.org*

When the calendar says “autumn” many local chapters resume a different schedule or move into a new programming emphasis. For some members, a different pace and routine begin; for others the classroom again calls.

Even if you are not formally going “back to school” this month, please consider engaging in this assignment to assess your chapter’s health and growth opportunities:

Reflect upon these four strong, compelling words and their many meanings. How do they apply or describe your chapter’s vitality?

- Energized—vigorous, forceful, transformational
- Relevant—pertinent, to the point, apropos
- Dynamic—strong, productively active, changing in relationship
- Inspired—exciting, stirring, moving

Mull over some negative words too; how can you avoid these descriptors applying to your chapter?

- Disengaged—detached, not in gear
- Cliquish—narrow circle
- Complacent—self-satisfied or unconcerned

The word “vision” is powerful in purpose. List adjectives that could be used to modify vision. Did you choose words like “focused,” “clear” or “centered”? Or did you choose words like “tunnel,” “peripheral” or “double”? Each makes “vision” have a very different connotation. Do any of these qualifiers describe some issues or activities within your chapter? How about the modifier “expanding”? Ask yourself and your chapter whether you are stretching your goals beyond your comfort zone, reaching out in new directions and putting our foundational ideals into actual practice?

Think back to your days in the math classroom. Remember the term “exponential”? It means raising a number or quantity to a power. In a P.E.O. application this could signify multiplying positive influence and ability by using positive influence and ability. Exponentially means more than lineal, more than two dimensional; it is power that is horizontal, vertical and all encompassing! Can your chapter’s vision be expanded exponentially in the months ahead?

How do we respond to achieve gold-star results?

**Encourage**—First, encourage one another with new thinking, new dreaming and new possibilities.

**Enable**—As you encounter ideas, keep open minds and open hearts. Ask what new potential will strengthen the chapter.

**Empower**—Find the fuel that will drive your action plan. Collaborate together. Devote the time necessary for success. Think positively.

For P.E.O. sisters in each chapter meeting, the significant words in our timeless Objects and Aims penned in 1869 by Alice Bird Babb challenge us with a dedicated vision. Its meaningful directives beckon us to ever-changing horizons in a world of opportunities we do not yet know.

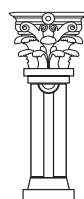
## Forward!

Paula Rueb, past president of Wyoming State Chapter, has accepted a five-year appointment to the P.E.O. Educational Loan Fund Board of Trustees beginning October 1. Welcome!

As her term concludes, grateful appreciation is expressed to current ELF chairman Kathy Bennett, New Jersey, for her fine service and leadership.

*Elizabeth*

Elizabeth E. Garrels,  
President, International Chapter



# EXPANDING POINTS

**Question:** What puts life into your words?

**Answer:** Follow through!

# September–October

The P.E.O. Record Vol. 122 No. 5

## special FEATURES

- 5** About the Artist—Andrea Vincent *by Becky Frazier*
- 6** October is International “Let’s Go Find the Others” Month
- 7** What’s Cooking at Cottey?
- 8** Women with Purpose: A Generational Look at What Connects Us *by Debbie Clason*
- 10** Gallery of Presidents  
Stephanie Jenkins, *Arkansas* • Peggy Bottorf, *California* • Lauren Chase Stuck, *Connecticut* • Sue Arnold Ward, *Georgia* • Ann Shively, *Idaho* • Linda Hamilton, *Manitoba-Northwest Ontario* • Kimberly R. Bridgham, *Massachusetts* • Pamela Hall, *Michigan* • Connie Cundy, *Minnesota* • Barbara Battles, *New Jersey* • Susan Forbes, *New York* • Lou McLaren, *Northeast District* • Diane K. Bond, *Ohio* • Marcia Nye, *Pennsylvania* • Lisa Rasmussen, *South Dakota* • Ann Wilson, *Virginia* • Jo Ann Fetterman, *Washington* • Kandy Higley, *Wisconsin*
- 17** 2010 Bed and Breakfast Listing
- 33** Order the Executive Office Tour DVD
- 49** New Member Gift Bags for Sale

## in every ISSUE

- 1** President’s Message—Expanding Our Vision *by Elizabeth Garrels*
- 1** Expanding Points
- 3** About P.E.O.
- 4** Your Letters
- 44** Items for Sale
- 49** To the Point
- P.E.O. Philanthropies and Foundation
- 34** ELF—An ELF Loan—It’s Personal *by Mary Staahl*
- 35** COTTEY COLLEGE—A Message from the Cottey President *by Judy Robinson Rogers, Ph.D.*
- 36** IPS—Designated Awards: Pathways to Peace *by Linda Spence*
- 37** PCE—Go Fish! *by Cathy J. Moss*
- 38** PSA—2010-2011 Endowed and Named Scholars
- 40** PSA—New PSA Online Nomination Form
- 41** STAR—Don’t Be Just ‘One of the Crowd’! Stand Out...Make an Impression! *by P.E.O. STAR Scholarship Board of Trustees*
- 42** P.E.O. Foundation—Mission: Possible—Investing in Women’s Education *by Barb Legge*
- 43** P.E.O. Foundation—Contact Information for P.E.O. Foundation Trustees
- 50** IPS—We Touch Their Lives... and Continue to Touch Their Hearts



**5** ON THE COVER Watercolor art by P.E.O. Andrea Vincent



6

“Let’s Go  
Find the  
Others”



**The P.E.O. Record** (ISSN 0746-5130) is published bimonthly by the P.E.O. Sisterhood, 3700 Grand Avenue, Des Moines, IA 50312-2899. Periodical class postage paid at Des Moines, Iowa, and at all additional mailing offices. Subscription price is \$5.00 per year. Single copies are \$1.00. POSTMASTER: Send address changes to **The P.E.O. Record**, 3700 Grand Avenue, Des Moines, IA 50312-2899. Printed in USA. Canada Publications Mail Agreement No. 40586518. Return undeliverable Canadian addresses to IMEX, P.O. Box 4332, Station Rd., Toronto, ON M5W 3J4.

Submission of material to The P.E.O. Record is your consent to the right to edit and publish it either all or in part in the magazine or on the website. The content matter may or may not reflect the opinions of the Sisterhood. Complete submission guidelines appear on the “Members Only” section of P.E.O.’s official website, [peointernational.org](http://peointernational.org). The P.E.O. Record welcomes members’ submissions to the address on the inside front cover.



## P.E.O. (Philanthropic Educational Organization) is passionate about its mission:

promoting educational opportunities for women. Our sisterhood proudly makes a difference in women's lives with six philanthropies that include ownership of a two-year women's college, Cottey College, and five programs that provide higher educational assistance: P.E.O. Educational Loan Fund, P.E.O. International Peace Scholarship Fund, P.E.O. Program for Continuing Education, P.E.O. Scholar Awards and P.E.O. STAR Scholarship. P.E.O. is headquartered in Des Moines, Iowa.



### P.E.O. Educational Loan Fund

Educational Loan Fund (ELF) is a revolving loan fund established in 1907 to lend money to worthy women students to assist them in securing a higher education.



### P.E.O. International Peace Scholarship

P.E.O. International Peace Scholarship (IPS) Fund was established in 1949 to provide scholarships for international women students to pursue graduate study in the United States and Canada.



### P.E.O. Program for Continuing Education

P.E.O. Program for Continuing Education (PCE) was established in 1973 to provide need-based grants to women in the United States and Canada whose education has been interrupted and who find it necessary to return to school to support themselves and/or their families.



### P.E.O. Scholar Awards

P.E.O. Scholar Awards (PSA) was established in 1991 to provide substantial merit-based awards for women of the United States and Canada who are either pursuing a doctoral level degree or are engaged in postdoctoral research at an accredited college, university or institution.



### P.E.O. STAR Scholarship

The P.E.O. STAR Scholarship was established in 2009 to provide scholarships for exceptional high school senior women to attend an accredited postsecondary educational institution in the United States or Canada in the next academic year.



### Cottey College

Cottey College is a fully accredited liberal arts college for women in Nevada, Missouri, owned and operated by the P.E.O. Sisterhood since 1927.

**Individual donors may make** tax-deductible gifts to the above mentioned projects or through the P.E.O. Foundation. Checks should be made payable to the project or the P.E.O. Foundation and sent directly to the P.E.O. Executive Office.

**P.E.O. is a philanthropic organization** where women celebrate the advancement of women; educate women through scholarships, grants, awards, loans and stewardship of Cottey College; and motivate women to achieve their highest aspirations.

For more information visit the website [peointernational.org](http://peointernational.org)

## P.E.O. TLC

Three years ago my husband and I were on our way home to Florida after vacationing in Pennsylvania. While driving through the mountains of West Virginia, my husband suffered a fatal heart attack at the wheel of our car. Our car rolled over three times. Fortunately a doctor and his wife were traveling in a car behind us, and they immediately called 911. The paramedics had to use the "Jaws of Life" to extricate John and me from the wreckage. They immediately transported me to the nearest hospital in Charleston, West Virginia. It was there that I received the excellent medical care that saved my life.

My very good friend and P.E.O. sister Mary Kay, hearing what had happened to me, contacted two chapters in Charleston to alert them of my accident. It was then that these two chapters volunteered to visit and cheer me up. Being alone in a strange city was difficult for me, but the love and concern of these sisters helped me through this ordeal. They made me feel special. I am so thankful for being a part of such a wonderful and compassionate organization. I must thank Sally Llewellyn and Karen Brimhall, Chapter K, for making the arrangements with their sisters. God bless them.

*Norrie Belin, GS,  
Spring Hill, Florida*

## Changing with the Times

At Chapter IC, Kansas City, Missouri's, 60<sup>th</sup> anniversary birthday luncheon in March, 87-year-old Jean Melvin, BP, Indianola, Iowa, commented on how great it was to see such a spread in ages among our current members. When asked how she felt about the recent changes

in protocol, she responded loud and clear—"I like them. We need to move with the times—the days of hats, gloves and not allowing children or husbands even to be in the house are not in the best interest of the chapter." Initiated into Chapter HO, Ames, Iowa, Jean helped organize chapter IC in 1950.

*Lyn Palmer, IC,  
Kansas City, Missouri*

## "Golden Marguerites" Program Connects Sisters

We have started a program called "Golden Marguerites" for members in senior facilities or who are more than 90 years old and don't always get to meetings. We visit them every holiday with a little homemade goodie, keep them up to date so they stay interested in P.E.O. and also learn of any concerns they have. The family sees how much P.E.O. means to their loved one and if they take over financial matters, understand her wishes to keep up membership even if she can't attend meetings. We have renamed the "phone tree" the "contact tree," since most of our members have email. We can quickly send out information about sisters and chapter matters. Once when a sister was too ill to be alone and needed someone to sit with her, I sent out an email at 9 p.m. for 8 a.m. assistance and within 30 minutes had lots of offers! We have moved to one meeting a month, but some miss more frequent contact with their sisters so we have afternoon coffees on the second meeting time each month. Beverages and only a simple cookie are allowed so there is not a lot required of the hostess. This informal social contact keeps us in touch between monthly meetings.

*Mary Beaumont, HU,  
Springfield, Illinois*

## Praise for the Website Redesign

I really like the new, fresh public side of the P.E.O. website (as well as the members' side). It should really help in telling our story to the world! Thanks for all the timely updates. It is a major undertaking with all the changes, but I have found all aspects of the changes over the past three years to be well-planned and orderly. I wish more groups were so functioning!

*Barbara McClure, JJ,  
Columbia, Missouri*

## Hugs of Encouragement

I have been a member of P.E.O. since 2000 when my mother and aunt initiated me after my high school graduation. It wasn't until I moved to Naperville, Illinois, for a job that I really understood how amazing P.E.O. is. Last summer I was part of a large lay off. Since that happened, my P.E.O. sisters have truly taken me under their wing. Battling this unemployment journey has been difficult, especially with all of my family back in Nebraska. I'm extremely close with my family and despite them telling me they are sending me hugs of encouragement over the phone, it just isn't the same. That is one of the best things my P.E.O. sisters have done for me, they are always giving me hugs of encouragement. It is almost like having my parents here. Every time I get a hug, I want to cry (not bad tears). To make sure I can eat and pay for my medications (I've had type 1 diabetes for 20 years), they have given me so many gift cards and food. They call and email me to spend time with me despite having their own busy schedules. The ladies of Chapter NS truly have the biggest hearts possible and are what P.E.O. is about. Our seven Founders would be beyond proud of them.

*Kristin Lynn Ewing, NS,  
Naperville, Illinois*





## About the Artist...Andrea Vincent

by Becky Frazier, Editor, *The P.E.O. Record*

Artist Andrea Vincent, EX, Evanston, Illinois, created the image that graces the cover of this month's P.E.O. Record. The watercolor painting called "Casa de Monte Vista" is of a real place in Palm Springs, California—one of the locations where Andrea paints.

A professional painter for 20 years, Andrea has been interested in art since she was a little girl. "I knew it was something I did well and loved," said Andrea. "I took art all through school; it was always my main interest." Andrea majored in psychology at Saint Lawrence University in Canton, New York. While she raised her two sons, Andrea found an outlet for her art in different ways—sewing, quilting, crocheting, knitting and flower

arranging. After her youngest son left for college she had the time—and the passion—to pursue painting. She took classes and workshops at the Palette and Chisel Academy of Fine Arts in Chicago, Illinois; the Fechin Institute in Taos, New Mexico and the American Academy of Art in Chicago, Illinois.

A member of numerous professional painting organizations, Andrea has been elected a Signature member of the American Watercolor Society. Her paintings have been exhibited in many galleries and her work was recently featured in "American Artist" magazine.

Andrea and her husband George live in Chicago, Illinois. They are happy to have their three beautiful granddaughters—Liberty, 13; Cora, 9

and Adele, 6—living nearby. Andrea's son David is serving as a combat engineer in Afghanistan and son George lives in Chicago.

Andrea was initiated into P.E.O. Chapter H, Fairfield, Connecticut, in 1970 by her mother-in-law Muriel Vincent. "It was a nice thing that P.E.O. came into my life," said Andrea, "because we ended up moving quite a bit and wherever we moved there was a P.E.O. chapter that welcomed me to the community. P.E.O. is one of the constants that made my life feel stable. Whenever we moved I always had a family—sisters that would welcome me. It is a very special part of my life. I am proud to be a P.E.O., I adore my P.E.O. sisters and I am very excited that P.E.O. is using my painting on the cover of The Record!" 🌸

# October is International

## “Let’s Go Find the Others” Month



*In 1869, when P.E.O. was just an idea, Franc Roads immediately said “**Let’s go find the others.**” She couldn’t wait to invite her friends!*

We want to recapture those feelings of purpose and enthusiasm that our Founders felt so long ago with a “Let’s Go Find the Others” month.

So, during the month of October, think of your daughters, granddaughters and dear friends who would embrace the values of P.E.O. and support our mission—in other words, women who would make good P.E.O. sisters. If they live in your community, introduce them to your chapter sisters. If they live in another community, complete the Introduction of a Woman Who is Not a P.E.O. form and send it as instructed. (You can find this form on the P.E.O. website under Local Chapter Forms in the President’s section.)

What **would** P.E.O. look like if every member introduced one woman to her chapter sisters?

### WE WOULD...

- build P.E.O. for future generations.
- honor the great legacy that our Founders gave us.
- increase the amount of loving care and support we have to give each other.
- enlarge our circles of influence and find more women in need of our assistance.
- strengthen our vital Projects.

---

*What **would** P.E.O. look like if every member introduced one woman to her chapter sisters?*

***Let’s find out.***

*“How grateful we can be that Franc Roads’ immediate reaction was ‘Let’s go find the others.’”*

Mabel Otis, President’s Message  
The P.E.O. Record  
November-December 1995





# WHAT'S COOKING AT COTTEY?

Since 1993 Chef Michael Richardson has been listening attentively to the students, faculty and alumnae of Cottey College as director of food service. He has answered their requests for specialty menu items, vegetarian and vegan dishes, trendy new cuisine offerings, as well as adapting some of their individual recipes for use in the Cottey Dining Room. He has now answered yet another request voiced for years by faculty, students, alumnae and guests from the P.E.O. Sisterhood visiting Cottey. "The Best of Cottey Cooking" is Chef Michael's collection of more than 200 of the most popular recipes used at Cottey adapted for use in your own home kitchen. Treat your family to Molten Chocolate Cake, Baked Potato Soup or Honey Dijon Chicken. Every recipe has been



Crepes, you'll find the recipe in "The Best of Cottey Cooking."

Future students of Cottey will also benefit from the sale of this

to be like home-cooked meals. Even international students suggest dishes from their homelands and the food service staff is happy to oblige. Chef Michael also offers a cooking class featuring Mediterranean dishes as well as a new class featuring exotic Asian cooking.

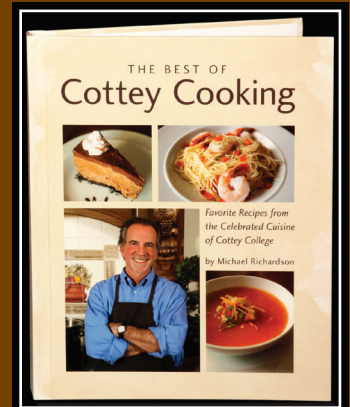
"The Best of Cottey Cooking" includes a diverse offering of recipes in 14 categories. Beyond recipe offerings on soups, breads, pasta and meats, you will find sections on chicken, seafood, vegetarian (lacto-ovo) and vegan entrees. A generous serving of vegetable, potato and rice dishes precede a healthy group of party food and dessert recipes to round out the book. It is a book every P.E.O. will want to add to her collection. Great recipes, great food and great for Cottey, what a combination! 🌸



home tested and proven for any cook's success. Chef Michael prides himself in the use of common ingredients easily found in local supermarkets. Whether it's a quick and easy breakfast of Almond French Toast or a special occasion brunch calling for Bananas Foster

cookbook as a significant portion of the proceeds will be used to establish a scholarship fund. Michael's philosophy of the book mirrors his philosophy in dining at Cottey. He understands the importance of the students' comfort away from home and designs menus

"The Best of Cottey Cooking" is for sale now. See the ad in the Items for Sale in this issue of The Record on page 48 for price and ordering information.



# Women with Purpose A Generational Look at What Connects Us

by Debbie Clason, Coordinator of Membership Development

**A while back, a group of us were discussing the first days of P.E.O. and what an amazing organization our Founders created, albeit unknowingly.**

Can you picture these young collegians marching into chapel wearing custom-made aprons with their big, bright stars positioned bravely over their hearts?

Our discussion led us to present day, where we marveled at the wide variety of ages that now comprise our sisterhood. The experiences of each generation make us different, yet we clasp hands together in sisterly understanding and support while we reach out to help educate the women of the world.

So then we wondered...as our organization moves forward and society continues to change, what characteristics—regardless of age—do P.E.O.s have in common?

**We are affected by the state of humanity and are determined to make the world a better place.**

Our sisterhood has such age diversity, that some of us remember trying times such as the Great Depression and World War II first hand. The experiences helped us develop a sense of frugality, while teaching us tolerance and generosity.

"I grew up in Germany during WWII," Monika said. "After the war, my family received care packages from a family in Missouri. We were so poor and that family sent us packages with soaps, clothing and groceries. It completely changed my mother's life and, later on, mine.

I believe that if you do good, it will come back to you in many ways."

As an American, Muzzy witnessed a different aspect of the war. "My neighbor, Dr. Kahara, a Japanese American, was sent to an internment camp in Topaz, Utah—leaving his wife and children behind," she shared. "Seeing the pain caused by the intolerance has made me a more tolerant person."

And even if we're so young that we learned about this era from our history books, we're still old enough to understand that human suffering is all around us.

"Living in Singapore was a real eye opener," Lindsey said. "Every country around us was a third-world country. I saw what we need to survive in this world—and it's not much."

**The women we admire are purposeful, compassionate and strong—and usually live right next door.**

Lindsey says her sister Malissa, aunt Linda and her mom's friend, Jeannette, were influential women in her life. "My mom died when I was three. My six year-old sister immediately stepped up to protect me. My aunt Linda took us both in and treated us like her own daughters. My mom's friend, Jeannette, took us to do a lot of kid's stuff when my mom was sick—activities that didn't have the word 'cancer' in them."

Karen admires her friend, Toni. "I don't think she's in my life by accident," she shared. "She's everything you would want in a

friend and everything you would aspire to be yourself."

Debbie credits her mother for teaching her how to put people first and keep a playful perspective on the drudgery of daily chores. "We have a saying in our family," she said. "People are more important than things—but every now and then you've got to dust!"

Joan and Muzzy both admire their grandmothers. Muzzy says her grandmother walked 1,000 miles across the plains with the pioneers when she was 12. "She made a vow to never ride in the wagon. She influenced the woman I am today."

"My grandmother was strong and determined and we all looked up to her," Joan said. "She was a spunky woman. She came to my wedding in Idaho 49 years ago when she was 81. She didn't want to fly. So she took the train—from Dayton!"

**We understand and embrace our innate ability to nurture others.**

"We have a desire to love and to be loved," Lindsey said. "We care for our own families, but also for those that we don't even know."

"Women of all generations value family and understand its importance—whether it's immediate family, extended family or P.E.O. family," Karen said.

"We share a lot of things," Monika said, "but I think we strive to be the best we can be by doing good things for other people."

"Our common ground is to care for others as well as ourselves," Muzzy said. "God gave us that desire—to love and to nurture." 🌻



## **Representing the Millennial Generation (born between 1981-2001) Lindsey Turnau, Chapter P, Houston, Texas**



Lindsey is a third generation P.E.O. and was initiated into Chapter FS, Bay City, Texas, slightly more

than two years ago—right before her husband was transferred to Southeast Asia. She connected with other P.E.O. sisters in Singapore and has always found “instant friends” in P.E.O. communities during temporary moves. Now that she’s settled in Houston, she’s found a great chapter to call home.

“There are 12 of us under the age of 30 in Chapter P,” the 26-year-old sister said. “They have become my best friends.”

## **Representing Generation X (born between 1961-1980) Karen Brunton, Chapter FL, Northville, Michigan**



Karen became a P.E.O. almost 12 years ago when a “dear friend” introduced her to the sisters of

Chapter AI, Plymouth, Michigan. Since then, she has helped organize a chapter and has held the offices of guard, corresponding secretary and vice president. Karen is 44 years old and works full-time in information technology for GM OnStar.

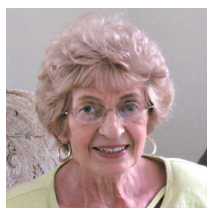
## **Representing the Baby Boomers (born between 1946-1960) Debbie Rogers, Chapter F, Memphis, Tennessee**



Debbie comes from a strong P.E.O. heritage beginning with her great-grandmother who was initiated at the

turn of the century. She is a past state president for Tennessee State Chapter and currently serves as the Eastern Region's Membership Representative for International Chapter's Membership Team. Debbie is 52 years old, married and has four children.

## **Representing Traditionalists (born before and up to 1945) Monika Dowell, Chapter HU, Burlington, Iowa**



Born in Bavaria, 69-year-old Monika came to the United States to work for a family in Princeton, New

Jersey, before marrying her husband and settling in Burlington, Iowa. Initiated in 2001, Monika said she was “honored and thrilled” to become a P.E.O. “I’m in a large chapter and everyone is wonderful,” she said. “P.E.O. has helped me a lot in my life.”

## **Joan Nabors, Chapter L, Salt Lake City, Utah**



Joan, 73, was still working part-time four years ago when a good friend took her to a Founders' Day

program. A year and several social events later, Joan accepted the invitation to membership and immediately became an active part of Chapter L. Today, she is the president of the reciprocity group. “We’ve developed deep friendships and do a lot of things together outside of P.E.O.,” she said. “It’s been very enjoyable.”

## **Edith (Muzzy) Fallentine, Chapter AE, Sandy, Utah**



95-year-old Muzzy still hosts holiday meals for her family, complete with table linens and fine china. In

addition to her family, she enjoys spending time in her beautifully landscaped yard where she plants lots of flowers. Muzzy became a P.E.O. after her daughter, Carolyn Gilstrap, went on the Utah State executive board. “I wish I would have done it sooner because I enjoy it so very much,” she said.

# *Gallery of* PRESIDENTS





Stephanie Jenkins  
Arkansas  
**Scatter Joy**



Stephanie Jenkins was born and raised in Galesburg, Illinois. She is a graduate of Cottey College.

Her Cottey experience had a major impact on her life for which she is extremely grateful. Stephanie graduated from the University of Tulsa with a degree in health and physical education. She taught in the Joplin, Missouri, school district before getting married and starting a family.

Stephanie has been married for 34 years to Ed and they have three children.

Daughter Judy is a 2009-2010 P.E.O. Scholar Award winner and is pursuing a Ph.D. at the University of Arizona in Tucson. Son Curt lives in Nashville, Tennessee, and son Pete lives in Allentown, Pennsylvania.

Stephanie was initiated into Chapter AN, Galesburg, Illinois, by her mother, Betty Gunther. Stephanie transferred to Chapter GQ, Joplin, Missouri; Chapter CK, Little Rock, Arkansas; and finally to Chapter CL, Bentonville, Arkansas. Stephanie's daughter Judy and sisters Tina Knief and Vicki Frea are also P.E.O.s.

Swimming is one of her favorite activities. Stephanie has been teaching swimming for more than 30 years. Other interests include walking, volunteering at her church and spending time with friends and family.

Peggy Bottorf  
California  
**Rise and Shine**



Peggy Bottorf was born and raised in Omaha, Nebraska, spent several years in England and settled in

the San Diego area in 1979.

Peggy graduated from the University of Nebraska with a degree in education. She returned to college to earn her degree in computer science at National University. She has applied both fields in her career serving as vice president for a private business college, and then in the management of information services for Scripps Health and San Diego Data Processing Corporation.

Peggy's P.E.O. life began long before she was initiated. With a P.E.O. mom and grandmother she was aware of the spirit of our sisterhood years before she learned the password. She was initiated in 1971 to Chapter BK, Omaha, Nebraska. While overseas she often joined other P.E.O.s in group meetings for a touch of home. She dimitted to Chapter TJ, Del Mar, California, in 1986, a chapter that claims her mother, Lu Duffin, and grandmother, Mabel Hosman (Chapter Eternal) as charter members. In 1999 her daughter, Rebekah, became the first fourth generation member of Chapter TJ.

Today Peggy lives in Carlsbad. Her two children are grown and living close by. She loves the warmth of close family and especially the company of her three grandchildren.

Lauren Chase Stuck  
Connecticut  
**A Song in Every Sister**



Born in Methuen, Massachusetts, Lauren Chase Stuck, spent her childhood in Cumberland, Rhode Island,

and then Hampstead, New Hampshire. She graduated with a B.S. in psychology from Bethany College in Bethany, West Virginia, where she met her husband, Randy, in concert choir. Randy and Lauren relocated from West Virginia to Connecticut in 1985. She began working for the town of Granby in 1996 as the collector of revenue, a position she still holds.

Lauren's passion for music has been fulfilled through years of singing with church and community choirs, ringing handbells, playing flute and directing the church children's choir. She and Randy are members of the East Granby Congregational Church where Randy is employed as the director of music and Lauren serves on the Abundant Life Ministry. Her other interests include gardening and genealogy.

Lauren was initiated into Chapter D, Hampstead, New Hampshire, in 1979. Lauren's mother, Lois Chase, was a charter initiate in Chapter D. Lois' gift of P.E.O. blossomed in 1989 when Lauren became a charter member of Chapter Z, Farmington, Connecticut.

Lauren and Randy have two daughters. Katherine, AH, Blacksburg, Virginia, is a special education teacher. Audrey, Z, Farmington, Connecticut, is a senior at Emerson College in Boston, Massachusetts, majoring in theater studies.



Sue Arnold Ward  
Georgia

## Be a **STAR** EXercise Your Talents



Sue Arnold Ward was born and raised in Leavenworth, Kansas. She was initiated into Chapter AD,

Leavenworth, in 1981. Her mother, Joyce Arnold, is still an active member of that chapter. Since 1986, Sue has been a member of Chapter AF, Peachtree City, Georgia.

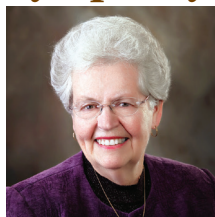
Sue attended the University of Kansas where she obtained a B.S. degree in pharmacy and met her husband, Michael. Married for 30 years, Sue and Michael have three children—Matthew, Andrew and Kaitlin. During their elementary years, Sue taught Sunday school and vacation Bible school at Saint Andrew's Episcopal Church and also served on the altar guild.

Sue has practiced pharmacy at the VA Medical Center, Kansas City, Missouri, and three hospitals in Georgia, currently employed at Piedmont Fayette Hospital.

Daily physical exercise, including tap dancing and reading are free time pursuits. Sue and Michael enjoy international travel and hiking. Last year they combined both, taking a walking tour of southwest Ireland.

Ann Shively  
Idaho

## Symphony of Stars



Ann Shively was initiated by her grandmother into Chapter D, Twin Falls, Idaho, in 1960.

Two years later she transferred to Chapter BG, Idaho Falls, Idaho—the chapter she still calls home. Ann's mother, two aunts and two sisters are also P.E.O.s.

Born in Merced, California, Ann was raised in Kimberly, Idaho, and earned her bachelor's and master's degrees in elementary education from the University of Idaho, Moscow, Idaho. Now retired, Ann taught second grade and kindergarten and was an elementary music specialist for 34 years. She is a member of the Delta Kappa Gamma Teacher's Society.

Ann stays busy with lots of music activities. She is the church organist at Saint Paul's Methodist Church, the secretary of community concerts and on the board of directors for Idaho Falls Opera Theater and American Guild of Organists.

Ann and her husband Jerry have two sons—Scott, who lives in Idaho Falls, and Todd, who lives in Seattle, Washington. In their free time Ann and Jerry enjoy singing in a community choir, participating in church mission projects, traveling, camping, golfing and entertaining in their home.

Linda Hamilton  
Manitoba-Northwest Ontario  
**Rock & Roll with P.E.O.**



Linda Hamilton was born and raised in Winnipeg, Manitoba. After completing her B.S. degree at the University

of Winnipeg, she attended the Western College of Veterinary Medicine in Saskatoon, Saskatchewan, where she graduated with a doctor of veterinary medicine in 1982. She moved to Selkirk, Manitoba, and worked as a farm veterinarian before switching her specialty to pet animals.

Linda has certifications in acupuncture, chiropractic and canine physical rehabilitation therapy. She opened her own veterinary business in Winnipeg in November 2006.

Linda is currently working on certifications in food therapy, Chinese herbal medicine and Tui-Na. She will start work on her master's degree in traditional Chinese veterinary medicine in June 2011. She is one of three vets representing Canada on the International Veterinary Acupuncture Society's House of Delegates board.

Linda has been married to Grange Morrow for 28 years. Grange was an RCMP officer for 30 years. Since retiring two years ago he has worked for the United Nations as a war crimes investigator and is currently stationed in Phnom Penh, Cambodia.

Linda and Grange have two daughters. Devin, 23, a former ELF recipient, is currently working in Sri Lanka for UNICEF and World University Services of Canada. Sagan, 21, just graduated with a degree in rhetoric and communications and lives in Winnipeg.

Linda was initiated into her current Chapter A, Selkirk, in 1988.



Kimberly R. Bridgham  
Massachusetts

## Contemporary Views and Traditional Values



Kimberly R. Bridgham was given the gift of P.E.O. in March 1994 when she was initiated into Chapter F,

Pittsfield, Massachusetts. This is the chapter she still calls home.

As an educator, P.E.O.'s mission resonates with Kim. She has a bachelor's degree in elementary education and a master's degree in special education. In 1986 she began working at the Pediatric Development Center, an early intervention program serving children from 0-3 with special needs. Kim works primarily with children with Autism Spectrum Disorder, coordinating a home-based program to provide intensive services for these children. Since 2000, she has been an adjunct instructor at Berkshire Community College and has served as president for the Epworth Mission Trustees for her church for many years.

Kim is blessed to still have both of her parents, four siblings, seven nieces and nephews, a great-nephew, and a great-niece. She shares her home with two cats—Christy and Noelle. Kim has a wonderful man in her life, Brian Kelly, who lives in California—so during the four and a half years they have been dating, they have racked up many frequent flyer miles!

Pamela Hall  
Michigan

## BEElieving in P.E.O.



Born in Boston, Massachusetts, raised in Cincinnati, Ohio, Pamela (Pam) Hall has made Bloomfield

Hills, Michigan, her home since college. She was initiated into Chapter CG, Birmingham, Michigan, in 1978 and still calls it her P.E.O. home. Lucille Hardgrove, her mother, is a member of Chapter BF, Cincinnati, Ohio.

Graduating from Miami University, Oxford, Ohio, in 1972, with a bachelor of science degree in interior design in the school of home economics, she married her college sweetheart and BIL Al two weeks after finishing school and has lived in a northern suburb of Detroit ever since. Pam and Al have two married children, Alex and Sally. They recently learned that they will be grandparents for the first time.

Pam has served on the State Membership Committee and was a delegate to the 2003 Convention of International Chapter in Milwaukee.

Early years in Michigan were filled with volunteer work for the Junior League of Birmingham, as well as school parent councils and fundraisers. She has worked for her husband's businesses for many years as controller and at various other times worked in the executive relocation field and as a clothing consultant with Doncaster.

In her spare time, Pam enjoys entertaining, cooking, setting beautiful tables, golfing, antiquing, reading, jazz and Latin music.

Connie Cundy  
Minnesota

## The P.E.O. Journey—A Lifetime of Sisterhood



Connie Cundy has been a member of P.E.O. for 43 years. She was initiated into her mother's

chapter, EE, in Cherokee, Iowa, in 1967. Her sisters, Pat Harrison and Linda Burkhart, are members of Chapter EE. Connie attended Cornell College in Iowa. She also attended the University of Iowa, Iowa City. While her husband was in the Navy in Norfolk, Virginia, she transferred to Chapter X. They moved to Minneapolis where she transferred to Chapter CH. She served as Minneapolis Cottey Area Chair for a year and Cottey State Chair for five years.

Connie's husband George is an architect and a very supportive BIL. Their older daughter Sarah and her husband, Jeff, are mechanical engineers; they have a son, George. Their younger daughter, Rachel, has a master of arts degree in divinity from the University of Chicago. Sarah and Rachel are also members of Chapter CH and live in Minneapolis.

Connie has volunteered in Minneapolis Public Schools, a school for immigrant children and adults, and with various community groups. She was active with Girl Scouts and served on the Minneapolis Girl Scout Board. Connie belongs to two book clubs. George and Connie enjoy spending time with their family, traveling—especially by RV—and cooking and eating foods from many different countries.

Barbara Battles

New Jersey

## **P.E.O.—Keep it Fresh as a Daisy**



Barbara Battles was initiated as a charter member of Chapter AV, Annandale, New Jersey, in

1995. She now belongs to Chapter Y, Princeton, New Jersey.

Born in Cleveland, Ohio, Barbara has also lived in Willoughby, Ohio; New York City, New York and Fords, Metuchen, Hoboken, Maplewood, North Plainfield, West Windsor and Howell, New Jersey.

Barbara earned her bachelor of fine arts degree from Syracuse University, College of Visual and Performing Arts, Department of Design, and her master of library science degree from Rutgers University, School of Information and Library Service. She worked as a commercial interior designer at several large architectural firms in New York City for 14 years, doing designs for banks, large corporations and brokerage firms.

Barbara is currently employed as a librarian at the South Brunswick Public Library where she heads the bookmobile and outreach department, planning adult programs for the public. In addition, she and her husband Daniel Fenski co-own the Windsor Gallery in Colts Neck, New Jersey—a fine art and picture framing business.

In her free time, Barbara enjoys traveling, book arts, collecting art and antiques and reading. She and Daniel also enjoy vintage and ballroom dancing and completing jigsaw puzzles.

Susan Forbes

New York

## **Reflections of Sisterhood**



Sue Forbes was initiated into her current chapter, BG, Clinton, New York, in 1995. She is a first

generation P.E.O. Sue's daughter, Kara, was initiated into Chapter BG in 2008, hopefully beginning a long line of P.E.O.s. Sue has filled several local offices and in 2004 served as co-chair for the New York State Convention.

Sue and her husband Dave have six children and 11 grandchildren ranging in age from 16 years to one month, with three babies born this year! Most of the grandchildren are close by and are a constant source of entertainment and enjoyment. The couple owned and operated "Kirkland House Bed and Breakfast" for six years and have recently closed in order to accommodate one of their sons and his young family.

Sue is a graphic artist who worked for an advertising agency for several years. Even though she is now retired, there are many local organizations that benefit from her logo designs, marketing campaigns and yearbook production.

Volunteering for several local organizations and keeping up with many hobbies, including watercolor painting, needlework, quilting, gardening, reading and photography fill in any of the little time left after the grandchildren get their "grammie time!"

Lou McLaren

Northeast District

## **P.E.O.—Turning Barriers into Stepping Stones**



As president of the Northeast District Chapter, Lou McLaren presides over the P.E.O. activities in Maine, New

Hampshire, Rhode Island and Vermont. Currently a member of Chapter A in Burlington, Vermont, she was initiated in 1990 into EL, Wilmette, Illinois, the chapter into which her grandmother, mother and sister were initiated.

Lou holds a B.A. in classical Greek from Carleton College, Northfield, Minnesota, and a master's in business administration and a master's in public health from the University of California, Berkeley. She currently is employed by MVP Health Care, where she manages statewide provider contracting for the insurer. She works on legislative issues that affect her company and implementing health care laws and rules within MVP.

Active in the North Ferrisburgh Methodist Church, Lou is the chair of the finance committee, teaches Sunday school and sings in the choir. She also drives for Meals on Wheels and, as the owner of Chesapeake Bay Retrievers, volunteers with the Lake Champlain Retriever Club. In her free time, Lou feels like the permanent chauffeur to her 10-year-old daughter, Munro, and her six-year-old son, Shea. Her husband of 20 years, Randy Gates, is a major in the Vermont Army National Guard and currently is deployed to Afghanistan.



Diane K. Bond  
Ohio

## **Believe in the Promise of Our Star**



Diane Bond is proud to come from a family that truly believes in the P.E.O. Sisterhood. Her mother Betty,

sisters Debbie Skinner and Denise Lenk and daughter Tammie are all P.E.O.s. Their father always told them the importance of serving others and never saying “no.”

Diane was raised in Michigan and graduated from Central Michigan University in her home town of Mount Pleasant, Michigan, with a B.S. in elementary education. She taught in Milwaukee, Wisconsin; Aberdeen, Maryland; and Chardon, Ohio. Before retiring, she has most recently worked as a bookkeeper and in the offices of the Geauga County Engineer and the Board of Elections.

Diane married her high school sweetheart Tom 44 years ago. They have raised their family and resided in Chardon for the last 35 years. Diane enjoys having daughter Tammie and son Tom with his wife Kim and daughter Katie all residing in the Cleveland area.

Initiated in 1982 into Chapter DU, Chardon, Diane has watched the chapter grow and thrive for the last 28 years. Diane has enjoyed volunteering in schools, at the local hospital and at church. She is a member of the United Methodist Church, Geauga County Panhellenic and Zeta Tau Alpha sorority.

In her free time Diane loves to read, knit, do needlework, garden and spend time with her P.E.O. sisters.

## **Marcia Nye Pennsylvania Imagine Our Possibilities with Wonder**



Marcia Nye was initiated into her mother and grandmother's initiating chapter, A, Highland, New York, in

1988. She is now in Chapter AZ, Doylestown, Pennsylvania.

Marcia grew up in the Hudson River Valley of New York State. She earned her bachelor's degree in literature/communication from Pace University, New York. In 1987 she married her husband Geoff and they have lived in Pennsylvania since 1993. The couple have one daughter, Katie, a fourth-generation P.E.O. who is majoring in international relations and French at Tufts University.

Marcia began her writing career at The Reader's Digest Association, Pleasantville, New York, then spent several years at The Federal Reserve Bank of New York. She was able to set aside her full-time work while raising Katie. Since 2000, Marcia has had the privilege of writing for local publications about gardening, the arts, restaurants, interior design and fascinating people. She also leads writing workshops at Tinicum Art and Science, Ottsville, Pennsylvania, a private high school rooted in the principles of Zen. Marcia has delivered Meals on Wheels since 1993.

In her free time Marcia likes to cook—in 2009 she won first place for her Bouillabaisse entry in a community-wide cook-off. She also enjoys gardening, theater, reading, walking her dog Dewey, relaxing with her cat Shadow and tending to Thelma and Louise, her Sicilian Buttercup chickens.

Lisa Rasmussen  
South Dakota

## **The Gift of Time is the Gift of Love**



Lisa Rasmussen was born and raised in Huron, South Dakota. She received a B.S. degree in accounting from

the University of South Dakota in 1984. After college, Lisa enjoyed a career with DM&E Railroad. She retired when their youngest was an infant, and has been a stay at home mom since.

Lisa and her husband Eric have been married for 25 years and have three children. Holden, 22, is a graduate of University of Nebraska and is currently pursuing a master's degree in architecture. Laura, 18, is a freshman at Bethel University. Anders, 13, is in eighth grade.

As a young girl, Lisa remembers when her mother, Joan, was invited to join P.E.O. in Huron. In 1992, while living in Brookings, South Dakota, Lisa was invited to be a charter initiate in Chapter CR. She currently is a member of Chapter CT in Sioux Falls where her mother is a charter member. Lisa's daughter, Laura, and niece, Amanda, were initiated into Chapter CT in June 2010.

Lisa manages their rental property and volunteers at her children's schools and her church. She is also a member of the Children's Care Hospital and School Auxiliary. When not busy volunteering or attending her children's activities, Lisa enjoys snow shoeing, cross country skiing, hiking and biking. Most days you can find Lisa and her dog, Macie, on their daily walk.

Ann Wilson  
Virginia

## Together We Shine



Ann Wilson has been an active member of P.E.O. since 1970, when she was initiated into her mother's

chapter, FE, Kansas City, Kansas. She has been a member of Chapter I, Hampton, Virginia, since 1985. Ann obtained a degree in nursing from the University of Kansas and worked as an emergency room nurse in Dallas, Texas, for two years. She then combined nursing with working as a flight attendant for the next 16 years flying for both Braniff Airlines and Piedmont Airlines. While flying for Braniff, she met and married her pilot husband Brian. Now retired, Brian is a busy community volunteer and BIL extraordinaire!

Ann and Brian have two sons, Collin and Doug. They are both recent college graduates (from Longwood University and the College of William and Mary, respectively). Doug is now in China teaching English and Collin is busy with job searches and plans for graduate studies.

In addition to P.E.O., Ann remains active in her small community of Poquoson, on the beautiful Chesapeake Bay. She has worked with the American Heart Association, the Friends of the Poquoson Library, annual book sales, school activities and other community projects. Ann loves travel and is an avid reader. She says that sailing with her husband and sons is the most relaxing, and best way to "get away from it all."

## Jo Ann Fetterman Washington P.E.O.—Providing Empowering Opportunities



Jo Ann Fetterman, a fourth generation P.E.O., was initiated into her mother's

chapter, EE, Warren, Ohio, in 1976. Her mother, two aunts, grandmother and great-grandmother all celebrated 50-plus years in P.E.O. Her niece Sara was recently initiated into a Texas chapter.

Jo Ann grew up in Riverside, California, until she was 16 when her family moved to Shaker Heights, Ohio. She met her husband Barry while both were attending Kent State University. Career moves resulted in stops in Cleveland, Philadelphia and Los Angeles prior to moving to Bainbridge Island, Washington, in 1990.

In 1990, Jo Ann retired from Citigroup where she managed the residential underwriting operation for Southern and Central California. She continued to consult financial institutions until 1994.

Jo Ann is active in community non-profits and served as a board member and treasurer of Bainbridge Performing Arts. Jo Ann and Barry are active supporters of Kent State University where their contributions include the establishment of an endowed scholarship.

Jo Ann is an avid horse enthusiast and loves to ride her horses whenever she has a free moment. She also enjoys cooking and creating gourmet meals for family and friends.

## Kandy Higley Wisconsin P.E.O. Starring YOU! Shaped by the PAST, Focused on the FUTURE



Kandy Higley was able to call her mother-in-law, Mary Higley, Past President, Wisconsin State Chapter, sister when she was

initiated into her chapter, BK, Marinette, Wisconsin, in April 1975.

Kandy was born and raised in Marinette, Wisconsin, and graduated from Evanston Hospital School of Nursing in 1969. Twenty years later she received her B.S. in nursing from Northern Michigan University.

She married her BIL, Bill, in 1969 and lived in Kalamazoo and Gladstone, Michigan, before settling in Menominee, Michigan, where they raised their family. Their daughter Heather Kurilla is married to Scott and they have two children—Maxwell and Madeline. Daughter Jennifer Berglin is married to Aaron and they have three children—Samuel, Grace and Jane. Son Tyler and daughter Alyssa, a fourth generation P.E.O., complete their family.

While raising her family, Kandy found time to volunteer for the Michigan PTA and La Leche League of Wisconsin. She has also served as a trustee for the local library. She attends Saint Paul's Episcopal Church where she is a member of Episcopal Church Women and Daughters of the King and has also served on the vestry committee.

She enjoys reading, gardening, spending time with family, traveling and attending theater and sporting events with Bill. She also enjoys the culture and history of Charleston, South Carolina, where they have a second home. 🌸

The complete list of P.E.O. chapters offering Bed and Breakfast begins below. The listing is not to be used for circulation. These names are offered as a service to members and are not paid advertisements.

In all cases, the B&B program is offered by chapters as a means of fundraising for P.E.O. projects. Local chapters shall not sponsor for the P.E.O. B&B service anyone who conducts B&B as a personal business for profit. The program is available to P.E.O. members, their immediate families and friends when accompanied by a P.E.O. B&B guests may be asked to identify themselves with a current P.E.O. membership card. Prices are per person, per night, unless otherwise stated. Checks should be made to the P.E.O. chapter whose letters are included in this listing. Neither the guest nor the hostess may claim the amount charged for the B&B

service as a contribution to one of the P.E.O. projects.

All B&B offerings are by reservation with the listed local contact who may or may not be the hostess. If cancellation is necessary, please let the hostess know as soon as possible. P.E.O. chapters and hostesses are responsible for the accuracy of their listing. International Chapter makes no warranties as to the facilities.

Local chapters participating in Bed and Breakfast are required to purchase liability insurance annually. International Chapter pays the major portion of the entire premium, and participating local chapters are asked to share in the remainder. The cost is \$60 per chapter and \$25 for each additional contact or area the chapter wishes to have in the listing.

The complete B&B listing is updated regularly on the P.E.O. website and is printed annually in the September-October P.E.O. Record.

To be listed in 2011, chapters not currently participating may download forms and insurance guidelines from the members' section of the website, complete them and return to the Executive Office with the correct insurance payment by June 1. Chapters discontinuing a B&B offering should notify the director of communications by the same date. Changes to the website listing may be sent to the director of communications and made at any time. Chapters may also submit forms and pay the entire annual insurance fee at any time during the year to be added to the website listing.

When participating in the P.E.O. Bed and Breakfast program, please remember you are a guest in a home—not a hotel. We want to ensure the continued success of this program which has generated many dollars for our P.E.O. projects and is a service of sister to sister.

Members may access the full Bed & Breakfast listing on the members website at

<https://members.peointernational.org/resource-library/listings-directories/bed-breakfast-listings>

## Celebrate 50 Years of the P.E.O. Executive Office Building with the New Tour DVD



50 years ago the cornerstone was placed for the P.E.O. Executive Office at 3700 Grand Avenue in Des Moines, Iowa. The headquarters of P.E.O. International, this building really belongs to all P.E.O.s!

Great for those who can't make it to Des Moines to see the building in person, as a way to remember your visit if you have been here or for an interesting program at a chapter meeting, the DVD takes viewers on a virtual tour of The P.E.O. Executive Office.

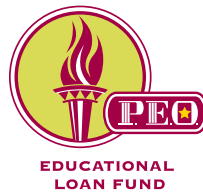
### Included on the disc are:

- Centennial Conference Center
- Library
- Offices of the P.E.O. philanthropies
- Executive board room
- Chapel

Available now, the DVDs are \$15.

Visit [peointernational.org](http://peointernational.org) or call 515-255-3153 to order.





# An ELF Loan—It's Personal

by Mary Staahl, P.E.O. Educational Loan Fund Board of Trustees

What makes a P.E.O. Educational Loan Fund (ELF) loan so special? Is it our great 3 percent simple interest? Or, perhaps it's the benefit of not having interest accrue until the recipient has completed her course of study. Many think the \$10,000 maximum amount available for a loan is what makes it so appealing. But the real reason an ELF loan is so special is that our loan is **PERSONAL**.

All loans granted begin at the local chapter level. By P.E.O.s actively searching for applicants, thoroughly interviewing and getting to know their potential applicant well, a relationship

loan process continues with the ELF office staff immediately sending the application packet to the applicant. They carefully review each completed and returned application to ensure that everything is in order. They are in contact with the applicant regarding any questions or clarifications needed before they send it on to the ELF trustees for review and approval. The office staff is committed to making it **PERSONAL**.

Each loan application is individually reviewed by the ELF trustees. The trustees get to know the applicants well by reading their personal statements, learning of their goals, aspirations and

Once approved by the trustees, the office staff notifies the new loan recipient and the local recommending chapter of the good news. After the funds are issued, the recipient and the local chapter are not contacted by the ELF office again until the recipient's course of study is complete. The repayment process begins by the recipient being notified that her loan repayment is to begin. The office again makes it **PERSONAL** by being a resource for the recipient in the payback phase of the loan. They are always there to answer questions and provide information on the repayment options. When the loan has been repaid in full, the office staff notifies the recipient and local chapter.

An ELF loan is indeed **PERSONAL**. Our loan recipients not only receive the financial assistance they need to complete their education, but they experience the love, commitment and concern that all P.E.O.s have for promoting educational opportunities for women. They have developed a **PERSONAL** relationship with their sponsoring chapter and a **PERSONAL** relationship with the ELF office staff and ELF trustees. They experience the **PERSONAL** realization of accomplishing their educational dreams and the **PERSONAL** satisfaction of knowing

that by repaying their loan, they are assisting future ELF applicants receive the funds to complete their educations.

Because it's **PERSONAL**, the P.E.O. Educational Loan Fund will continue to be an invaluable financial resource for qualified women seeking to complete their educational goals. 🌸

They [recipients] experience the **personal** realization of accomplishing their educational dreams and the **personal** satisfaction of knowing that by repaying their loan, they are assisting future ELF applicants receive the funds to complete their educations.

is developed with the applicant. The chapter can then recommend the applicant with confidence. The chapter has taken the first step toward making it **PERSONAL**.

Once the local chapter recommendation form is received in the International P.E.O. ELF office, the

their need for financial assistance. The chapter letter of recommendation also gives the trustees valuable information about the applicant. The trustees make it **PERSONAL** by learning everything possible about the applicant and approving loans to all qualified applicants.

# A Message from the Cottey President

by Judy Rogers, Ph.D., President, Cottey College



Elizabeth Garrels, during her remarks at the Cottey College Commencement, reminded the graduates that the first letter of P.E.O. stands for

"philanthropic." The P.E.O. Sisterhood is a philanthropic educational organization.

By dictionary definition, philanthropy is an affection for mankind that is manifested in giving donations of money or work to needy persons or socially useful purposes. Since philanthropy is motivated by affection or love, then giving is a joyful activity. I announced Cottey College's first-ever comprehensive fundraising campaign at the 2009 International Convention


reach our goal. However, we have quickly recruited nearly 100 volunteers from across the country who are joyfully participating in regular campaign conference calls and following up on assignments every month. Barbara Andes, campaign chairman, models optimism and confidence for us all. Giving brings joy.

The 2010 Cottey graduates understood the importance of giving, and even during their last weeks at Cottey, raised \$1,000 to give back to the College to support the fine arts instructional building. The students were clearly aware of the need for a building to bring the fine arts faculty and classes together in one well-equipped facility.

The faculty and staff of Cottey College participated in the first-ever campus campaign. With the leadership of their colleagues, the faculty and staff

Cottey recently received a gift of \$500,000 from Rebecca Pohlad for the Defining Moment campaign during an awareness event in Seattle. Rebecca, who is a member of Chapter EC in Tulsa, Oklahoma, is a 1975 graduate of Cottey College. Rebecca's mother, Donna Christen, is a member of Chapter F in Huron, South Dakota. Rebecca gave her gift careful consideration, but when she made her decision, she told me that she was happy with her gift. She hosted the awareness event in Seattle to create a beautiful occasion to announce the gift, and the joy of giving was clear to all of us.

Susan Bulkeley Butler, a member of Chapter AF, District of Columbia, is also joyfully giving to the Defining Moment campaign. Susan has just published her second book entitled "Women Count: A Guide to Changing the World." The book is an excellent account of women's accomplishments and an effective reminder of what women have yet to achieve. Susan has made a cash contribution to the campaign of \$250,000 along with a planned future gift of \$250,000. In addition, she is sharing her talent and experience with the campaign staff by serving on the advisory council. She is demonstrating how women can change the world by supporting women's education.

The purpose of the Defining Moment campaign is to raise \$35 million for five priorities that will define the future of our College. I believe the campaign will also accomplish another important purpose. I believe it will contribute to a culture of philanthropy to support Cottey and all our P.E.O. projects long into the future. As our president reminded us, we are a philanthropic educational organization. 



Dr. Judy Rogers accepts a \$1,000 check from the Cottey graduating class of 2010. Students raised the money to support the fine arts instructional building.

in San Diego, and since that time I have been blessed to witness the joy that givers experience—giving their time, their talent, their money. I do not mean to say that the campaign is not challenging to manage and that we do not have a long way to go to

exceeded their goal by raising \$116,000 for the Defining Moment campaign. The leaders of the campus campaign planned a party with balloons, music and celebration to demonstrate the joy with which they supported the campaign for their College.

# Designated Awards: Pathways to Peace

by Linda Spence, International Peace Scholarship Board of Trustees

**Have you traveled or lived in another country?** Cultural and language differences can be overwhelming. Imagine how challenging it might be to arrive in the United States or Canada to start graduate study using a foreign language. Having a P.E.O. or chapter to greet and support you could make a world of difference.

P.E.O.s provide love and encouragement and promote peace through understanding among peoples of the world, beginning with education. Since 1968, P.E.O.s have contributed to the International Peace Scholarship Designated Award program, which matches each student with a chapter or group of chapters. This special relationship offers the recipient an opportunity to experience the warmth of P.E.O., and learn about our culture while we learn about her studies and her homeland. A bond may develop with the recipient making her a better ambassador for peace when she returns to her homeland.

Jue Zhang, a 2007 recipient from China, recently wrote, "I am writing to say thanks to your organization and all of the sweet friends in P.E.O. who helped me or other friends like me. I miss those days you and your friends encouraged me through sending cards or writing to me... I want to let them know, those days, those words, those people, I will never ever forget."



Sandra Hiari (center), IPS recipient from Jordan, with members of Chapter N, New Canaan, Connecticut

Being paired with a Designated Award (DA) student can change your life too!

IPS is a unique philanthropy; P.E.O. chapters do not sponsor IPS students. The relationship between a chapter and student begins after the student has been selected. A Designated Award is a gift to IPS of \$500 or more from an individual, chapter or group of chapters, with the request that it be used for a DA. Consider joining nearby chapters in funding a DA student. You are giving a gift of education as your donation becomes part of the scholarship awarded to the student.

The DA form ([at peointernational.org](http://peointernational.org)) must be mailed with the check to the state/provincial/district treasurer in time to be received in the Des Moines office by March 1. Individual gifts can be made by mailing the DA form and check directly to P.E.O. International.

After accepting our scholarship, students are matched with chapters. Be aware that each student may have several chapters supporting her. Cards, notes of encouragement, emails, photos or small gifts mean so much, making her feel welcomed and supported while here. Since a student's

primary responsibility is her education, and several chapters may be contacting her, please be considerate of her time. A student's study schedule may not always allow time for prompt responses.

If your designated student is nearby, inviting her to your home for a meeting or holiday visit would give her a glimpse of life in the U.S. or Canada. Even if she is far away, a meaningful relationship can be established through email or photos. Since IPS students are internet-savvy, they are comfortable using email to stay connected.

IPS students not only appreciate our scholarships, but they often remember most the encouragement and support from P.E.O.s. These special connections we make as women help break down barriers, bringing us closer to peace in the world. 🌸

**Find more information about Designated Awards at [peointernational.org](http://peointernational.org), Members Only, P.E.O. Projects/Philanthropies, then P.E.O. International Peace Scholarship Fund.**



# Go Fish!

by Cathy J. Moss, Chairman, P.E.O. Program for Continuing Education Board of Trustees

**Chinese proverb—  
Give a man a fish  
and you feed him for  
a day. Teach a man  
to fish and you feed  
him for a lifetime.**

The number one objective for the Board of Trustees of the P.E.O. Program for Continuing Education is to award a grant-in-aid to a deserving student who, with the help of PCE, will complete her educational program and be able to "go fish," or in our case, find gainful employment that will support her for a lifetime. It is an exciting and compelling assignment, one that no trustee ever takes lightly. The trustees are very diligent in assessing each application for the likelihood of completion and future employment. In addition to reading and evaluating the applications, the trustees must also make a monetary determination for every applicant. Knowing that we have been entrusted to award your gifts and donations, PCE grants are always determined by the answers to these three simple questions.

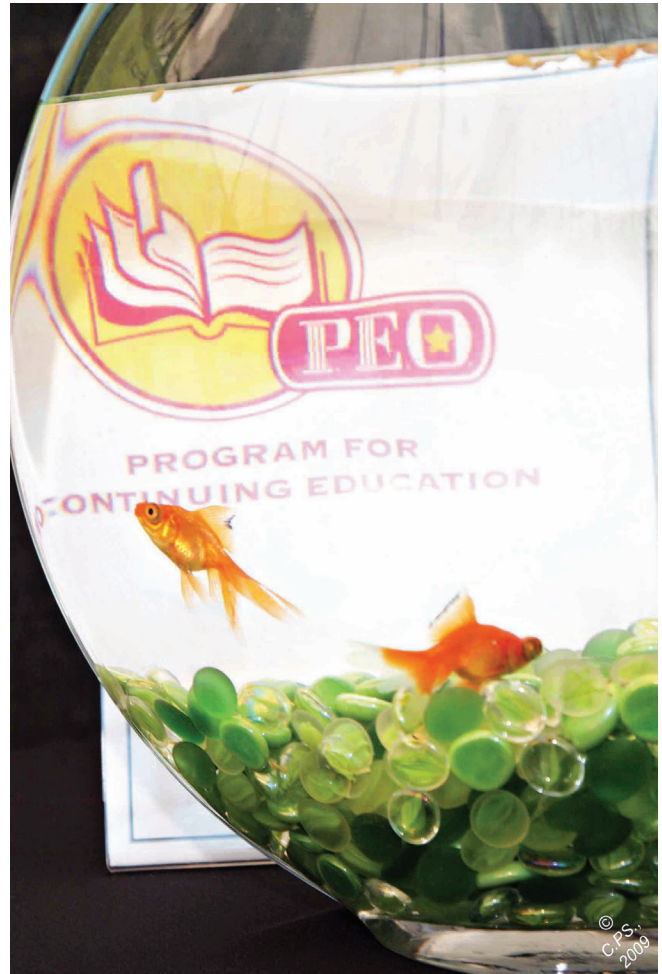
## **Does the student meet the PCE eligibility requirements?**

The most overlooked aspect of PCE eligibility is that a student must be within 24 months of completing her educational program and that upon completion, she will be prepared to join the work force or advance in her current employment. PCE is NOT for those students who are piggy-backing

degrees or completing one program and jumping into the next. A PCE grant, along with the warm support of the sponsoring chapter, will empower our students to finish their programs so that they will be better able to take care of themselves and their families.

## **What is the student's financial need?**

One important component that many applicants struggle with is presenting a clear financial plan. It is imperative that every applicant explain how she will pay for the remainder of her educational program. The trustees cannot award a grant to a student that, based upon the information submitted in the PCE application, does not have the financial resources to pay for her schooling in place. When your chapter's PCE Committee reviews the completed PCE application, the student's financial plan must be checked for monetary feasibility. Do not submit a PCE application until your student provides the committee with a realistic financial plan. PCE never awards charitable grants; our grants are for educational purposes only.



## **How much money is available to award?**

The PCE yearly budget is determined by chapter donations, bequests, gifts from individuals, available earnings from both our long term and short term investments and income from endowment funds held in the P.E.O. Foundation for the benefit of PCE. In addition, PCE is awarded a portion of the revenue from the undesignated funds held in the P.E.O. Foundation. Through the generous contributions of P.E.O. members and chapters, PCE has been able to award more than 1,800 grants totaling \$2,500,000 this year. Your gifts, coupled with education, are making it possible for our students to "go fish" for a lifetime. 🌸

# P.E.O. Scholar Awards


## “Investing in Journeys to Remarkable”

by Diane Todd, Chairman, Scholar Awards Board of Trustees

The P.E.O. Scholar Awards Board of Trustees takes great pleasure in announcing the selection of six Endowed and Named P.E.O. Scholars for 2010-2011. We would like to thank the donors of these awards and extend congratulations to each of these six recipients. Although the amount of the scholar's award of \$15,000 remains the same, each of these women has received additional recognition for her outstanding academic achievement and her

proven potential to make a difference in her chosen field.

Endowed awards are supported by gifts in individual endowment funds administered by the P.E.O. Foundation. Only the interest earned is used for the award; the principal remains intact. Named awards are one-time awards in the amount of a P.E.O. Scholar Award given by individuals, chapters or collective gifts. The PSA trustees encourage all P.E.O.s to consider endowing or naming a future P.E.O. Scholar Award. Further information is found on the PSA website.

The Scholar Awards Trustees also extend our thanks to all chapters and chapter sisters on behalf of the entire group of 85 2010-2011 Scholar recipients for continuing to support P.E.O. Scholar Awards by “Investing in Journeys to Remarkable.” Thank you. The complete listing, photos and biographies of all 2010-2011 scholars can be viewed on the Scholar Awards page on the P.E.O. International website at [peointernational.org](http://peointernational.org). 

## 2010-2011 Endowed and Named Scholars

**Michelle Jackson**  
**Presidential Scholar in Honor of Elizabeth Garrels**  
 Ph.D. in biological engineering  
 Massachusetts Institute of Technology  
 Chapter OZ, Treynor, Iowa



Michelle Sukup Jackson graduated from the University of Iowa with distinction and honors and a degree in biomedical

engineering. She completed her master's degree at the University of Iowa before pursuing her Ph.D. at Massachusetts Institute of Technology on a National Science Foundation Graduate Research Fellowship. Michelle's research focuses on the effects of short-term and long-term infection on DNA damage and subsequent repair and the effects of caloric restriction on DNA damage. She is active in a number of organizations that encourage young women to pursue careers in science, technology, engineering and math (STEM). Michelle plans a career as a professor at a major

research institution and hopes to be able to affect science policy.

*The Presidential Scholar Award was established in 1995 by the P.E.O. Foundation. It is awarded in honor of the president of International Chapter.*

**Monica Forbes-Amrhein**  
**Mary Margaret Bradley Named Award**  
 Medical Scholar - M.D./Ph.D.  
 in bioengineering  
 University of Illinois at Urbana-Champaign  
 Chapter KD, Urbana, Illinois



Monica Forbes-Amrhein graduated with honors from the University of Illinois at Urbana-Champaign with both a B.S. and M.S.

in nuclear engineering. She was accepted in the University of Illinois Medical Scholars dual degree program where she will earn both a Ph.D. in bioengineering and an M.D. in medicine. Monica's Ph.D. research studied the use of ultrasound to target

chemotherapy drug and gene therapy. She plans to be a radiologist specializing in cancer treatments. With an engineering background, she hopes to be able to design and refine the machines she will be using as a physician. Monica has an impressive list of publications, honors and awards. In 2007, competing against 2,000 applicants, she received the New Investigator Award from the American Institute of Ultrasound in Medicine and was the first ever graduate student to win the award.

*This award was established in 2005 from a bequest from the estate of Mary Margaret Bradley and her family. Peg was initiated into Chapter AZ, Racine, Wisconsin, in 1962 and she later transferred to Chapter EM, Melbourne, Florida, where she remained active until her death in 2005.*

**Ami Abou-Bakr**  
**Ventura Neale Endowed Scholar**  
 Ph.D. in public policy  
 Kings College, London, U.K.  
 Chapter BE, Twin Falls, Idaho

Ami Abou-Bakr graduated from Georgetown University with a B.S. in foreign service—Middle East



concentration. She received an M.A. in international studies and diplomacy from the London School of Oriental and African Studies.

Ami is presently working toward her Ph.D. in public policy at Kings College in London. Ami's interesting global experiences include two United States Senate internships, study abroad work in Morocco and Egypt, a conference presentation at Windsor Castle and a study trip to the United Nations center in Geneva. She speaks fluent Arabic. Her present research focuses on public/private partnerships for disaster avoidance, response and recovery. Ami's goal is to work for the U.S. government as a national security advisor. Her recommenders believe her research is powerful and potentially groundbreaking in regard to U.S. security policy.

This fund was established in 2003 from the Ventura Neale Trust. Ventura was initiated by Chapter AE, Madison, Wisconsin; she later joined chapters in New York and Michigan before transferring to Chapter M, Miami, Florida, where she remained a devoted member until her death in 2003.

**Talina Konotchick**  
**Mary Louise Remy Endowed Scholar**  
 Ph.D. in biological oceanography  
 The University of California,  
 San Diego—Scripps Institute  
 of Oceanography  
 Chapter UD, Coronado, California



Talina Konotchick is a summa cum laude graduate of the University of California Los Angeles with a degree in marine biology. She has received her M.S. in oceanography and is now pursuing a Ph.D. in biological oceanography at the Scripps Institute in San Diego.

She is studying the health of the giant kelp, which provides habitat and food for many marine organisms. She is the recipient of two prestigious three-year government fellowships, has done research in Panama, Fiji, Costa Rica and Easter Island, and was selected for the National Science Foundation sponsored Antarctic Biology Course. A number of scientific articles and presentations have taken her to Costa Rica, Hawaii and Belgium. Talina aspires to a career in academia or in research at a biotechnology company.

*The Mary Louise Remy Endowed P.E.O. Scholar Award was the first endowed award and was established through gifts from California State Chapter in honor of Mary Louise Remy who presided at the Convention of International Chapter in 1991, the year that Scholar Awards was adopted as the fifth project of the P.E.O. Sisterhood.*

**Anneka Lenssen**  
**Wilma Leonard Turner—Ann Marie Turner Endowed P.E.O. Scholar**  
 Ph.D. in art history  
 Massachusetts Institute of Technology  
 Chapter O, Ada, Ohio



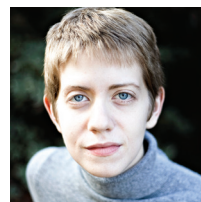
Anneka Lenssen graduated summa cum laude, Phi Beta Kappa from Kenyon College with a degree in studio arts. She studied at Harvard

University and then began working on a Ph.D. in the history of art and architecture at Massachusetts Institute of Technology, where she is a student in the Aga Khan program for Islamic Architecture. Her dissertation will be a study of painting and film making in Damascus, Syria, in the 1960s and 1970s, and the global travels of the artists during that transitory time. Anneka has served as a curatorial intern in the United Arab Emirates, and has received a Fulbright grant to assist with her research in Syria. She has numerous publications and

presentations, and plans a career as a professor of art history.

*The Wilma Leonard Turner and Anne Marie Turner Endowed P.E.O. Scholar Award was established in 1999 to honor Wilma Leonard Turner for her many years of service. Wilma served as president of International Chapter from 1997-1999. The award is also named for her daughter Ann, who died of cancer in 2000.*

**Katharine Beutner**  
**Carolyn Lindley Cooley Ph.D. Named Scholar**  
 Ph.D. in English literature  
 University of Texas at Austin  
 Chapter CR, Austin, Texas



Katharine Beutner is a Phi Beta Kappa graduate of Smith College with a B.A. in classical studies. She earned an M.A. in English

from the University of Texas at Austin and is currently there working on her Ph.D. in English literature. She has received several competition prizes for her writing; is the author of two published books, including a novel entitled "Alcestis"; and is working on her second novel, entitled "Killingly." Katharine was selected to attend the Norman Mailer Writers Colony Workshop in 2009 and is the recipient of a competitive two-year internship at the Harry Ransom Center, one of the top rare books and manuscripts collections in the world. Her research focus is on British women writers of the early 18th century, particularly women who wrote for print publication. Katharine hopes to find a faculty position that will allow her to teach both literature and creative writing.

*This award was made possible by a gift given by Robert H. Cooley and his wife, Carolyn, in honor of Dr. Carolyn Cooley's life-long commitment to education, particularly in the fields of English and American literature. Carolyn has been a P.E.O. member of Chapter T in Tampa, Florida, since 1980.*





# Hear Ye! Hear Ye!

## Scholar Awards Nominations Now to be Submitted ONLINE!

New Submission Dates August 20 - November 20

### GET READY!

- Find a Candidate to Nominate
- Gather Nominee Information
- Write Chapter Nomination Letter

### GET SET!



- Save Chapter Nomination Letter on Your Computer\*
- Log into P.E.O. website–Scholar Awards Section

### GO!

- Open Scholar Awards Nomination Form
- Complete the Form
- Attach Chapter Nomination Letter\*
- Click Submit

**Your nomination  
is complete.  
Congratulations!**

Need Help?

### PSA Nomination

**Nomination Chapter**

\*State/Province:

\*Chapter:

City:

**Nominee Information**

\*First Name:

Middle:

\*Last:

*Please use home mailing address*

\*Address1:

Address2:

Address3:

\*City:

State/Province:

Zip:

\*Country:

\*Email:

\*Type of Degree:  (Only doctoral degrees and postdoctoral research positions are eligible i.e. Ph.D, D.V.M., etc.)

\*Date Degree Expected:   (Degree expected must fall on or between April of 2012 and August of 2013 to be eligible)

**Chapter Statement**

Chapter \_\_\_\_\_ is satisfied that this candidate meets the criteria for the eligibility and voted (a majority voice vote) to nominate this candidate at a meeting held on:

**Attach Chapter Letter**

**Chapter President**

Name:

Address:

Telephone:

**Contact Information**

**Important:** Chapter is required to provide the email address, name and position of a person in your local chapter who can be contacted by the PSA Supervisor regarding this nomination. If the contact person has a spam filter on her email account, have her set up peodsm.org as a safe address so that emails from the PSA Supervisor do not end up in the spam folder instead of the inbox.

\*Contact Email:

*The above email address belongs to:*

\*Contact Name and Chapter Position:  (i.e. Mary Brown, Tech Contact)

Note: Fields marked with an asterisk \* are required.

**Use Help  
Button!**

\*If you are having problems, ask your technology chair to assist you.



STAR—Don't Be Just 'one of the crowd'!

# Stand out... Make an Impression!



## The inside scoop—an insight into the most frequently asked questions!

- Don't be satisfied to just complete the application materials.
- Take time to really get to know and work with your applicant!
- Help her application stand out from those of her peers.

## All materials submitted are considered together as a whole:

- A supportive chapter letter describing the uniqueness and strength of your applicant.
- A well thought out written student essay.
- Organized student activity charts and personal recommendations with impact.

## All really affect applications! THEY DO MATTER!

- While scholarship and class ranking are both academically important, they are not the most defining selection criteria for the P.E.O. STAR Scholarship.
- More important indicators of a strong and involved applicant are a greater degree of responsibility and proven leadership qualities along with demonstrated potential for future success. (Are there examples of her thinking and working outside the box?)
- Your applicant's packet will have a much greater impact when her student activity charts are organized and delineate significant

active leadership roles and potential for future success as well as show substantial or unique involvement in broad-based extracurricular and community service activities.

**And, finally...** Be sure when you are ready to submit your applicant's packet, that it is complete... Use the checklist!



The November 30 postmark deadline for the P.E.O. STAR Scholarship applications is fast approaching!

We're looking forward to hearing from you! 🌸

## Criteria for the P.E.O. STAR Scholarship

- Exhibits excellence in leadership, extracurricular activities, community service, academics and potential for future success
- Is a graduating senior, 20 years of age or younger by application deadline of November 30
- Is in the final academic year (senior year) of secondary education at time of application deadline
- Has a minimum cumulative GPA of 3.0 on a 4.0 scale
- Is a citizen or legal permanent resident of the United States or Canada
- Plans to attend an accredited post-secondary educational institution in the United States or Canada full-time or part-time in the fall of the academic year following her high school graduation
- Is recommended by a P.E.O. chapter



# P.E.O. Foundation 50<sup>th</sup> Anniversary

## Mission: Possible—Investing in Women's Education

by Barb Legge, Trustee, P.E.O. Foundation

### The Time: 1961

**The Mission:** Provide a means through which individuals or corporations may make tax deductible gifts, bequests and devises to the qualified educational and charitable purposes of our Sisterhood.

### The Solution: The P.E.O. Foundation

**The Result:** 50 years of service to the P.E.O. Sisterhood! In 2011 the P.E.O. Foundation will be celebrating its golden anniversary. Established in 1961 with just \$2,000, the P.E.O. Foundation now administers more than 850 funds and has assets of more than \$75,000,000. Because it qualifies as a charity under Section 501(c)(3) of the Internal Revenue Code, gifts and bequests to the Foundation are deductible for U.S. and state income, estate and gift tax purposes. The Foundation's primary function is to receive, hold, administer and distribute these contributions.

Gifts or bequests to the P.E.O. Foundation may be given to our projects and may be divided among two or more of our projects if specified by the donor. As a second option, the gift or bequest may be given without a specific designation for the P.E.O. Foundation trustees to distribute annually according to our projects' special needs.

The third option is for a donor to make a gift or bequest to be held in perpetuity by establishing a permanent fund with only the income used for a project or scholarship, again as specified by the donor. If a donor chooses to set up a permanent fund in the P.E.O. Foundation, the fund can be established in the donor's name or

in the name of one being honored or memorialized. An initial deposit of U.S. \$1,000, toward a U.S. \$5,000 minimum permanent balance (which must be reached in five years) is required for a fund. Provisions are made by the donor for distribution of interest to our P.E.O. projects or to scholarships.

More information on the history of the P.E.O. Foundation and the services now offered by the P.E.O. Foundation will follow in future issues of *The P.E.O. Record*.

### Your mission, should you choose to accept it:

Join the celebration of the 50th anniversary of the P.E.O. Foundation. The trustees ask that you do two things:

First, that each chapter have one program in 2011 about the P.E.O. Foundation. We encourage you to visit the [peointernational.org](http://peointernational.org) website and click on the P.E.O. Foundation link. There you will find current information about the P.E.O. Foundation. You will also find a copy of the skit, "P.E.O. Foundation—A Girl's Best Friend," that would make a fun program for your chapter. For additional information or brochures you may contact a Foundation trustee listed on the inside cover of *The Record*.

Second, we would like to invite you to celebrate the 50th anniversary with your gifts to the **"P.E.O. Foundation 50<sup>th</sup> Anniversary Fund."**

■ We are encouraging each chapter in every state, province or district to donate \$50 to this fund. Chapters could also give donations of \$50 as a way to honor 50 year members, chapter presidents, 50<sup>th</sup> birthdays, chapter anniversaries or other special events.

Celebrate the 50<sup>th</sup> Anniversary of the P.E.O. Foundation with your chapter's gift of \$50 or gifts from individuals of any amount to the P.E.O. Foundation 50th Anniversary Fund. For details see the article on this page.

- We also encourage donations of any amount by individuals as gifts, honorariums or memorials. This is an excellent opportunity to include P.E.O. and its educational projects in your year-end giving. Remember donations from individuals are tax deductible for IRS purposes.
- Please make checks from local chapters payable to your state, province or district chapter and indicate "P.E.O. Foundation 50th Anniversary Fund" on the memo line. These checks need to be mailed to your state, provincial or district treasurer (or paid assistant). Checks from individual donors should be made payable to the "P.E.O. Foundation 50th Anniversary Fund" and mailed directly to the Treasurer of International Chapter.

This anniversary celebration will last through September 2011 and will culminate at the Convention of International Chapter in Saint Louis. At that time all money contributed to the "P.E.O. Foundation 50<sup>th</sup> Anniversary Fund" will be distributed as a special gift to our P.E.O. educational projects.

Please, join the celebration with a gift to the **"P.E.O. Foundation 50<sup>th</sup> Anniversary Fund."**

**Your gift to the P.E.O. Foundation—regardless of its size or nature—will help ensure the continuance of the P.E.O. mission.** 🌸





# Contact Information for P.E.O. Foundation Trustees Assigned to States, Provinces, Districts and Chapters in Subordinate Territory

Please direct all questions or requests to the Trustee under whose name your state, province, district or chapter in subordinate territory is listed.

## **Toots Green**

1019 S. Canyon Road  
Alamogordo, NM 88310-3622

### **States:**

Arizona  
Arkansas  
California  
Florida  
Indiana  
Iowa  
Massachusetts  
Michigan  
Minnesota  
New Mexico  
New York  
Ohio  
Oklahoma  
Oregon  
South Carolina

### **Northeast District:**

Maine  
New Hampshire  
Rhode Island  
Vermont

## **Patricia Brolin-Ribi**

P.O. Box 305  
Sun Valley, ID 83353-0305

### **States:**

Idaho  
Kansas  
Louisiana  
Mississippi  
Missouri  
Montana  
Nebraska  
Nevada  
North Dakota  
Tennessee  
Texas  
Utah  
Washington  
Wisconsin  
Wyoming

### **Chapters in Subordinate Territory:**

Alaska  
Hawaii

## **Barbara Legge**

12974 Prairiewood Drive  
Aberdeen, SD 57401-8104

### **States:**

Alabama  
Colorado  
Connecticut  
Delaware  
District of Columbia  
Georgia  
Illinois  
Kentucky  
Maryland  
New Jersey  
North Carolina  
Pennsylvania  
South Dakota  
Virginia  
West Virginia

### **Provinces:**

Alberta-Saskatchewan  
British Columbia  
Manitoba-Northwest Ontario  
Ontario-Quebec

## Guidelines

Ads are limited to those for fundraising projects for P.E.O. or for items and services directly relating to the organization, which are not available elsewhere. Payment shall be made to sponsoring chapter, not to an individual. Reader ads are available to members only and must include chapter identification. Send all information to [mknee@peodsm.org](mailto:mknee@peodsm.org) three months preceeding the month of issue.

## Rates and Billing:

\$5 per line, per insertion, to be billed after publication. Chapters running insertions for a year or longer may submit a digital photo to appear on the website with the information at an extra cost of \$10 per year.



identifies ads with photographs on the members' side of [peointernational.org](http://peointernational.org)

Members may view all Items for sale at

<https://members.peointernational.org/news-events/record/items-sale>

### The P.E.O. Record Now Also Available on CD

Chapter DO, Kansas City, Missouri, has been providing The P.E.O. Record on tape for many years. The chapter has now added the option of getting the magazine on CD. For information on receiving The P.E.O. Record either on CD or a tape, please contact Anne Vaeth, 11321 Craig, Overland Park, KS 66210, akv@everestkc.net. The chapter provides this service at no charge for our visually impaired sisters.

### Listings and Project Information on Website (formerly printed in the CARE edition)

Check the members' side of the website for updated listings. With the exception of bed and breakfast, these are no longer printed. Under Reference Listings (formerly CARE) you will find bed and breakfast, Gatherings Away from Home, and TLC. Under Reciprocity and Group

Contacts you will find contacts for reciprocity by College Groups, Overseas Contacts, Resort/Retirement Groups. Updates are done weekly and may be emailed to [mknee@peodsm.org](mailto:mknee@peodsm.org).

Under Projects/Philanthropies you will find forms and other information on our projects.

### Email Scam

We have received complaints of hackers using a member's email contacts to send fraudulent notices to our members. These usually indicate the member is out of the country, is in danger and needs money.

Delete the email and do not answer it. Your computer will not get a virus. The person whose system has been compromised, however, will need to have her computer checked. She should also change all of her passwords. These include passwords for email, internet access and hardware. 🌸

## New Member Gift Bags for Sale!



**Make your new initiate feel special and involved by presenting her with a Member Gift Bag.** This includes the Constitution as well as the Guide for New Members (available only in this bag). It's a good place to include your chapter yearbook and her own membership card. There's room for other chapter material you may wish to include. The gift may be ordered online for \$8.



Send completed form including your former address printed in the upper right corner (or give address at which magazine was last received) six weeks in advance of your move.

**Mail:** Membership Dept., P.E.O. Executive Office  
3700 Grand Ave., Des Moines, IA 50312-2899

**Fax:** The P.E.O. Record, 515-255-3820

**Call:** 800-343-4921 (automated line available 24 hours a day. May not be available in all areas of Canada.)

**Email:** [membership@peodsm.org](mailto:membership@peodsm.org)

**Web:** [peointernational.org](http://peointernational.org) (click on address change form)

Automatic Address Change: The P.E.O. Record may be mailed to two different addresses if the same seasonal address is used at the same time every year.

## Address or Name Change (please print)

Chapter letter(s) \_\_\_\_\_ State \_\_\_\_\_ Date Address Effective \_\_\_\_\_

Name \_\_\_\_\_

Street or Box Address \_\_\_\_\_

City \_\_\_\_\_ State \_\_\_\_\_ Zip Code \_\_\_\_\_

IPS—WE TOUCH THEIR LIVES...  
AND CONTINUE TO TOUCH THEIR HEARTS

**Be a part of the IPS excitement** by lending a helping hand, bringing the power of hope through education to distant corners of our world.

