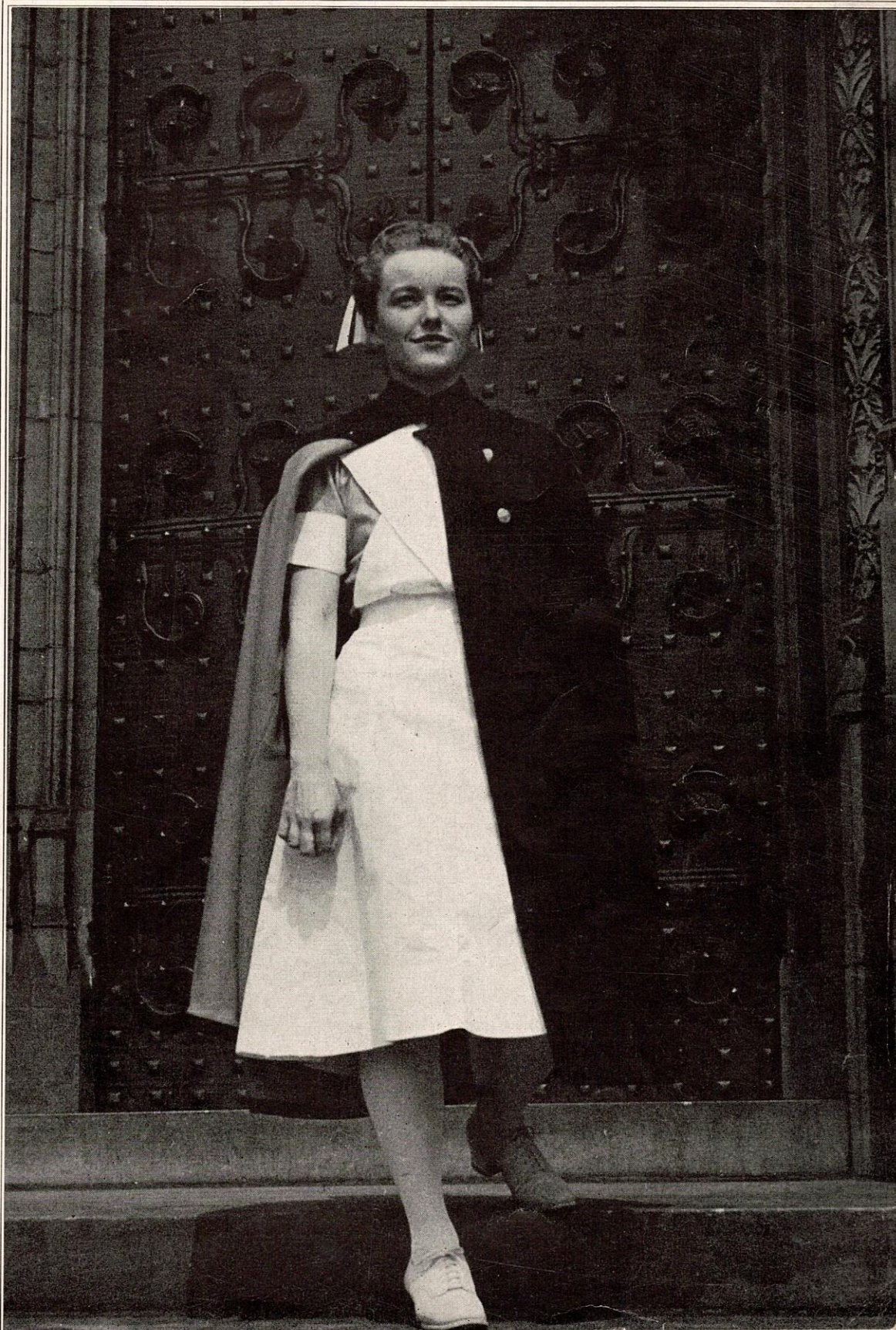


P.E.O. *Record*



**JUNE
1944**

The P. E. O. Record

VOL. 56

JUNE, 1944

NO. 6

Officers of the Supreme Chapter

Pres., Carrie B. Simpson (Mrs. Howard E.) 309 Belmont Rd., Grand Forks, N. D.
First V. P., Dorothy L. Weller (Mrs. Frank) 461 Woodbury Rd., Glendale 6, Calif.
2nd V. P., Bessie R. Raney (Mrs. R. J.) 3500 Lake Shore Dr., Chicago 13, Ill.
Organizer, Laura Storms Knapp (Mrs. Seaman) 822 Brookridge, Ames, Iowa
Rec. Sec., Mabel Scurrah (Mrs. P. B.) 19 King George Terr., Victoria, B. C.
Cor. Sec., Gertrude P. Tomhave (Mrs. J. B.) .. 137 Summit Ave., Montevideo, Minn.
Treasurer, Miss Rose M. Owens Masonic Temple, Omaha 2, Nebr.

Board of Trustees

BOARD OF TRUSTEES, EDUCATIONAL FUND: Ruth E. Stotler (Mrs. F. C.), 205 S. Mill St., Colfax, Wash., Chairman; Ruth Read Stewart (Mrs. M. A.), Yankton, S. D.; Leila Smith Kirshner (Mrs. S. R. F.), Highway 61, Blytheville, Ark.

BOARD OF TRUSTEES, P. E. O. RECORD: Nell Farrell Stevenson (Mrs. James), 2126 E. 38 St., Tulsa 15, Okla., Chairman; Lucille Moore Shields (Mrs. B. G.), 2310 University Ave., New York City 53; Edna G. Plumb (Mrs. R. A.), 40 Cambridge Blvd., Pleasant Ridge, Mich.

BOARD OF TRUSTEES, SUPPLY DEPARTMENT: Mrs. Martha W. Ashcroft, 1110 First Ave. So., Payette, Idaho, Chairman; Katherine Jacob (Mrs. K. D.), 3812 Woodley Road N. W., Washington, D. C.; Alice Spensley Rinehard (Mrs. C. E.), 709 West Willow St., Chippewa Falls, Wis.

SUPPLY DEPT. AND EDUCATIONAL FUND: Mrs. Hazel E. Hine, Exec. Secy., Mt. Pleasant, Iowa.

BOARD OF TRUSTEES, COTTEY COLLEGE: Zora Y. Knight (Mrs. Charles), Tecumseh, Okla., Chairman; Mr. R. J. Davidson Jr., Vice Chrm., U. of Mo., Columbia, Mo.; Dean Mary P. Van Zile, Secretary, Kansas State College, Manhattan, Kans.; Dr. I. N. McCash, Treasurer, Phillips University, Enid, Okla.; Dr. J. D. Elliff, Columbia, Mo.; Katherine E. Church (Mrs. H. V.), 6905 Carleton Terr., College Park, Md.; Mr. Lynn Ewing, Nevada, Mo.

COTTEY COLLEGE: President, Dr. Marjorie Mitchell, Nevada, Mo.

MEMORIAL LIBRARY COM.: Mrs. Gertrude C. Sebern, 1274 - 7 Ave. N., Fort Dodge, Iowa.

COM. DORM. FURNISHINGS: Ruth Earp (Mrs. C. C.), 427 W. Walnut, Nevada, Mo.

THE COVER THIS MONTH



The cover this month carries a picture of Virginia Braley, Chapter F, Pittsburgh, Pa., a P. E. O. daughter. She was graduated June, 1943, cum laude, from the University of Pittsburgh school of nursing, having completed a five year course. In September, 1943, she joined the Red Cross nursing service and was assigned to overseas duty. Definitely that smile would lift the morale of any service man on land, on sea, or in the air.

THE OFFICIAL PUBLICATION OF THE P. E. O. SISTERHOOD

The P. E. O. Sisterhood was founded January 21, 1869, at Iowa Wesleyan College, Mt. Pleasant, Iowa, by, Mary Allen (Stafford), 1848-1927; Ella Stewart, 1848-1895; Alice Bird (Babb), 1850-1926; Hattie Briggs (Bousquet), 1848-1877; Franc Roads (Elliott), 1852-1924; Alice Virginia Coffin, 1848-1888; Suela Pearson (Penfield), 1851-1920.

THE P. E. O. RECORD is published by the P. E. O. Sisterhood at 1501 W. Washington Road, Mendota, Ill. Printed by The Wayside Press. Entered as second-class matter at the postoffice at Mendota, Illinois, November 30, 1931, under Act of August 24, 1912. Acceptance for mailing at special rate of postage provided for in section 1103, Act of October 3, 1919. Authorized July 29, 1919. Subscription price to P. E. O.'s 50 cents a year; subscription price to non-P. E. O.'s, \$1.00 for eleven issues (May issue not sold).



CONTENTS

From the President of Supreme Chapter	1
P. E. O. United Effort in Women's War Work	2
Illinois State Convention	3
Kansas State Convention	5
Michigan State Convention	7
Missouri State Convention	9
Oklahoma Convention	11
Florida Convention	13
Convention Notices	15
Arkansas Convention	16
Texas Convention	18
Educational Loan Fund	20
From the Editor's Desk	21
A Birthday Gift to P. E. O.	22
Absentees Pay the Price	23
Local Chapter News	25
Officers of Local Chapters	29
P. E. O.'s in Uniform	30
Courtesies to Relatives	30
P. E. O. Personals	31
Marriages	32
Chapter Eternal	32
Officers in Local Chapter Groups ..	33
Notices	33
Reader Ads	33

MRS. WINONA E. REEVES

Editor

2842 Sheridan Road
Chicago 14, Illinois

From The PRESIDENT *of Supreme Chapter*

Carrie Bonebrake Simpson (Mrs. Howard E.)



P. E. O. Conventions Are Constructive

STATE CONVENTIONS ARE STRESSING constructive planning this year to an unusual degree. Not only are the intangible values of P. E. O. being given consideration, but the War Effort and the peace to follow will hold an important place in each program.

WHAT CAN THE INDIVIDUAL P. E. O. DO to assist in establishing a just and lasting peace after this war? There are several fundamental ways in which each one of us may help by preparing ourselves to give intelligent cooperation to plans presented by world leaders. It is our obligation

TO BE INFORMED on a few major questions which are now before the United Nations. An intelligent and informed people are the basis of peace.

TO KEEP AN OPEN MIND. Too many of us have only superficial information, and we need to test our knowledge by what others believe. Asking questions will help more than answering them for most of us. A teachable mind is a real asset in these critical days, and having reached a conclusion that can be vindicated we can then proceed to build on that foundation.

TO GIVE ATTENTION to conditions in our own homes and communities. Solving a few problems there will give insight and strength for meeting the issues in wider fields. The men and women who are to direct the course of history for the next century are those on the battlefronts today and the children too young at present to know what the war is about. These children need wise and helpful parents. Since nothing good can come from neglecting the nurture of the children, let us look again at the opportunities close at hand for building a durable peace.

IF YOU ARE MADE CHAIRMAN of a committee in your local chapter, the first thing to do is to ask yourself and perhaps the chapter president these questions: Are the duties of this committee given in the chapter By-Laws? Has this work been done successfully in the chapter previous to this year? Is there a better procedure?

IF THERE IS NO OUTLINE for the duties of your committee then study its possibilities and make it as helpful as possible. We learn by doing, and the most inexperienced member may make a very efficient committee chairman if she is willing to learn.

WILL PRESIDENTS AND PROGRAM COMMITTEE CHAIRMEN of local chapters please note the following section from the Constitution, Part III, Article XI, Section 5: "Quotations from Ritual. Quotations from the ritual shall not appear in year books, the official magazine, or papers which come before the public."

IN STATE CHAPTER CONVENTIONS there is occasionally confusion as to duties of committee chairmen. Much of this could be obviated by study of Roberts' Rules of Order Revised. Through the index of this little volume it is almost always possible to find definite instructions given on duties and procedure. This applies also to reports of committee chairmen and how they should be made to convention. If you are in doubt study the text and then ask for an interpretation if you need it.



P. E. O. UNITED EFFORT



IN WOMEN'S WAR WORK



THE CORNER-STONES OF PEACE have always been laid amid thunder of guns. However, talk of post-war adjustments must not blind us to present needs and opportunities. The war is being won but there is much hard fighting ahead. It will be won only through our continued united effort. All war agencies solicit and need our active support.

OCD Anniversary

May 20th marks the third anniversary of the Office of Civilian Defense. During the past three years some eleven million Americans, many of them P. E. O.'s, have given generously of their time as guardians of a nation's safety. Theirs has been the task of "watchful waiting," and we have all been grateful for their organized alertness. Practical aid has also been given in preventing serious damage from fires, floods, tornadoes, and other disasters. The OCD stands ready today to help in any emergency. Congratulations to this fine organization, and to all who are thus serving our nation!

Red Cross War Fund — USO

The 1944 Red Cross War Fund campaign has been extended that contributions may reach the goals set for various communities. When boys from prison camps, from Navy vessels, and from military operations in every zone, write home urging support for the Red Cross, the response should be a whole-hearted awakening to this opportunity for aid to our armed forces. Just pride may be taken in the contributions of time and money made by P. E. O.'s to this worthy cause.

Service by our members is also continuing in all lines of USO endeavors. One lad in uniform recently wrote, "The USO is the closest thing to home that exists for us that are far away." He especially referred to "the motherly attitude of the women who treat us as their sons."

Clubmobiles in Italy

A recent article told of an incident occurring on Christmas Day on the

By DOROTHY L. WELLER (Mrs. Frank C.), Chairman

Italian front. An American dough-boy was in a muddy fox-hole just over the hill from where the Germans were pouring a hail of fire and steel in preparation for a counter-attack. The soldier was about to open a can of C rations for his Christmas dinner when something caught his notice from behind. He wheeled and gazed in startled amazement. He couldn't believe his eyes, so he wiped them again with his mud-caked hand. Yes, it was true! Crouched there on the border of his fox-hole was a pretty American girl, a box of doughnuts and a magazine in one hand and a pot of steaming coffee in the other. In addition to these, she left with him a Christmas memory of a few minutes conversation with a typical American girl. She and her helpers served 13,000 doughnuts that day to more than 5,000 soldiers, while other units were also operating all along the area back of the lines where American soldiers were fighting one of the most grueling battles they had ever fought.

In Italy, by officers and men alike, the Clubmobile is rated as indispensable in helping them face the extremely difficult conditions of this war theater.

P. E. O. United Victory Fund

Through our United Victory Fund P. E. O. has made possible four such Mobile Units, with full year's maintenance for two. So far, \$52,000 has been contributed to the Red Cross for this work. Our United Victory Fund was created that P. E. O. as a unit might contribute to any phase of war effort. So far, providing Clubmobiles, with maintenance, has seemed the most effective service P. E. O. could render our armed forces. Continued support of this Fund will mean increased aid to our fighting men and to our countries.

Letters from Home

We are told that letters from home are the greatest factors for building the morale of our armed forces; and that the content of a letter is extremely important. Thought should be given to the personality, emotional make-up, and likes of the one to receive the message; also letters inspire the men to greater accomplishments. Such letters are not always easy to write, but are a very small way of expressing our personal gratitude for the sacrifices being made by our men and women in service.

All of us today are feeling the strain of added responsibilities and anxiety for loved ones in far away places of danger. We are learning the value of faith, shining with the light of human kindness. Missing someone from the family group gives women everywhere a bond of kinship, a kinship reflected in increased participation in all war activities. With heads up let us do the job at hand to the best of our abilities, knowing that "In union there is strength," and that only by universal cooperation can victory be won.



While it is true that in the midst of life there is death,
It is also true that in the midst of death there is life.

—Mme. Chiang Kai-Shek



Truth forever on the scaffold,
Wrong forever on the throne;
Yet that scaffold sways the future
And behind the dim unknown
Standeth GOD within the shadow,
Keeping watch above his own.

—James Russell Lowell



A sinner is one who loves sin.—Song of Bernadette.

ILLINOIS

STATE CHAPTER CONVENTION



Reported by
FRANCES GREEN TORNOW

ILLINOIS STATE CHAPTER streamlined the 1944 convention, held May 25-26 at the Palmer House, Chicago, but lost none of the important significance of value to members and Sisterhood on this occasion. Mrs. Mary C. Beatty, president, proved her efficiency and capability, shown constantly throughout the year, by moving each session along without overlooking any item to come before convention.

The hostess chapters worked under war-time difficulties in arranging for the two day visit of delegates from the 180 chapters. Mrs. Blanche Lee, BA, chairman of the hostess committee, was a splendid organizer and had the help of excellent committees. Hostess chapters were BA, BT, BV, DD, DS, DY, DX, EA, EB, EH, EN, FE, FO. Committee officers serving with Mrs. Lee were Mrs. Margaret Best, EN, vice chairman. Mrs. Katherine Lee, DD, recording secretary; Miss Mabel Hunt, DS, corresponding secretary and Mrs. Blanche Powell, EA, treasurer.

It was the privilege of Illinois chapter to have the President of Supreme Chapter, Mrs. Carrie B. Simpson in attendance at the convention. Other guests of honor were Illinois' own, Mrs. Bessie R. Raney, second vice president of Supreme Chapter; Dr. Marjorie Mitchell, president of Cottey College and Mrs. Hazel E. Hine, executive secretary with 14 past state presidents.

Mrs. Alice Perrin, of Fayetteville, Ark., made the trip "home" for convention. Other past state presidents in convention were Mrs. Elizabeth D. Simmons, Mrs. May Hartley DeMoney, Mrs. Margaret McAfee, Mrs. Katherine Church, Mrs. Myrtle C. Combe, Mrs. Lettie S. Mudge, Mrs. Stella R. Leys, Mrs. Mary K. Lindsay, Mrs. Pauline Rinaker, Mrs. Ethel C. Jellife, Mrs. Ruth M. Cruse, Mrs. Beulah M. Thornton, Miss Louise Dicus.

Seated on the platform with Mrs. Beatty were members of her board: Mrs. Geneva C. Schroder, first vice president; Mrs. Ruby E. Prince, second vice president; Mrs. Louise R. Waddell, organizer; Mrs. Bessie S. Ballow, recording secretary; Mrs. Hazel V. Ziesel, corresponding secretary; Mrs. Jennie H. Rugh, treasurer.

Mrs. Marion Carson, CK, was the assisting recording secretary, for convention.

Mrs. Beatty, in her greetings at the opening of convention, said "May P. E. O. play its part in the establishment of a just and enduring peace".

The welcome from the hostess chapters was made by the vice chairman, Mrs. Margaret Best, since the chairman, Mrs. Lee was suffering with laryngitis. The response was made by First Vice President, Mrs. Schroeder.

The Memorial service, arranged by Chapters L, Woodhull, honored 59 members, including two past presidents of Illinois, Mrs. Nellie R. Danks, whose tribute was read by Mrs. Ruth M. Cruse, EU, past state president and Luella B. Stafford, whose tribute, prepared by Mrs. Elizabeth L. Simmons, past state president was read by Mrs. Margaret McAfee. As the name of each member on the memorial role was read, candles were lighted and given to delegates; the little lights, all over the large convention hall, adding further thoughts of loved sisters whose memories live in the chapters.

Music, all through the convention, brought especial words of praise from the visitors. Mrs. Ruth Hoepe, BT, an exceptionally fine pianist and organist, gave prelude recitals.

Two unusually fine trios or singers were presented, one composed of Mrs. Mabel Kaser, Mrs. Wilma Ward, and Mrs. Mabelle Cheney, sang at the Memorial hour. A second trio, Mrs. Lela M. Long, Mrs. Amy H. Straight, and Mrs. Ruth Ramseyer, sang, "The Star" by Rogers, accompanist Mrs. Ruth Congdon Hoepe, BT.

Vocal solos were given by Mrs. Edith Figley, BT, and Mrs. Eloise Plouer, EI. Mrs. Mary S. Mann, DX, violinist, played obligatos for several numbers and opened the Wednesday afternoon session with a lovely solo.

There was a definite feeling of pride when Mrs. Simpson was introduced as the principal speaker at the banquet. Her dignity, poise, beauty and ability impressed everyone.

She spoke of P. E. O.'s participation in war activities; the forward movement in every phase of the Sisterhood's program and the new consciousness on the part of P. E. O. of its power to create a better world.

Several men in uniforms, guests of P. E. O. mothers, wives and sweethearts, added distinction to the assemblage.

Miss Mabel F. Hunt served as "ghost speaker" for the hostess committee chairman, Mrs. Lee. Miss Hunt literally brought down the house, without any apparent attempt at humor. No more entertaining bit of relaxation could have been provided had it been arranged weeks in advance.

Dr. John W. Holland, minister of the Little Brown Church of the Air, gave the invocation.

Music during the banquet and the reception was furnished by the Ralph Ginsburg ensemble.

In the past year the State Chapter has given \$2215.24 to the National Victory Fund for the purchase of Red Cross mobile units. Mrs. Mary K. Lindsay brought this fact out in her report on war activities of the state chapter and she stated that 4475 active members throughout the state are serving in Red Cross, United Service and Civilian Defense work. They have purchased nearly four million dollars worth of bonds and have performed many other valuable war-time services.

There was deep interest in the informing talk on "Red Cross Activities and Services to the Armed Forces", given by Miss Genevieve Teuton of the Chicago Chapter of American Red Cross.

One of the convention highlights was the address by Dr. Marjorie Mitchell, whose subject, "Cottee Takes Part in the War Effort" did not stress so much the material activities as the undertaking of a war-time program to fit in with a post-war world.

"Training people for war-fare is not nearly so hard as training for peace and that is what we must do now" she said.

Inspiring devotional services were given by Mrs. Martha Annegers, Tuesday and Mrs. Anna Dunlap, EW, Wednesday.

Beautiful flags of our nation, state and P. E. O. were in their proper places on the attractively decorated platform. It was a pleasure of the convention to learn that the handsome state flag was a gift to the Illinois State Chapter from the 1944 Convention group.

Charters were presented by Mrs. Louise R. Waddell, organizer, to three new chapters, FZ, Elmhurst; GA, Mt. Carroll and GB, Jerseyville. They were welcomed by the Supreme Chapter President. The response was given by Mrs. Ida Mae Thayer, GA.

Every delegate and guest privileged to see the exemplification of P. E. O. ritual by Chapter DX, DeKalb, were benefitted by this experience. It was a model meeting in every sense of the word.

A collection of rare articles, associated with the lives of the P. E. O. founders, was arranged as an exhibit in the suite of Chapter D, Chicago. Many visited this display and were greatly impressed with the historical importance and value of the collection. One of the colorful articles was the shawl which was worn by Mrs. Lulu Corkhill Williams at her initiation in 1869. There were many interesting pieces from her home.

Her niece, Mrs. Lulu Weaver Avery, on behalf of Chapter D and in memory of the Founders, presented the collection as a gift to P. E. O. on its seventy-fifth birthday anniversary. Miss Leila Robinson spoke interestingly about the growth of the collection and expressed hope that some day, in the near future, a P. E. O. pioneer museum in the middle west might be established with these articles as the nucleus.

The usual question period, of much value to all delegates, took the form of an "Information, Please", hour with the Supreme Chapter President as the expert under the title "Conventions during war-time".

Reports of the state officers and committee chairmen, showed that the work of the state board had been efficiently adjusted to run smoothly in a war-time year.

Mrs. Hazel E. Hine, executive secretary, gave a brief but informing report on her duties in the executive office, stressing the importance of the loan fund business. She read excerpts from letters of young women, who have been, who are, and who want to be, loan fund girls.

Reports were given by Mrs. Gertrude Stephenson, CT, courtesy; Mrs. Louise Waddell, organizer local by-laws and special work. Mrs. May Y. Mullen, DJ, local chapter reports. Mrs. Bertha C. Hazard, AH, year books; Mrs. Alice Cavins, CF, auditing and financing; Mrs. Beulah Thornton, A, grouping.

Miss Louise Dicus former past state president read the recommendations, which were voted upon as one of the final items of business in the Illinois meeting; they concerned Cottee scholarships, grouping of chapters, additions to the Victory Fund, original music for the ritual and acceptance of gifts, including the gift of Chapter D, Chicago.

Marie Brandenburg, EN, Wheaton, initiated 57 years ago into original Iowa A, attended as a guest and was introduced to the convention. Another guest was Mrs. Rust, first state president of South Dakota.

The state president had her daughter, Miss Jean Beatty, FY, as her personal page.

"A Panoramic View of P. E. O." was given by Mrs. Bessie R. Raney, second vice president of Supreme Chapter who chose the picturesque "surrey with the fringe on top" as the mode of conveyance for the passengers at the beginning of the seventy-five miles of travel. She described many of the sign-post along the way — the educational fund, the Memorial Library, the P. E. O.

College. The sign-post marked "80,000" she pointed to with special pride as that number now replaces the original seven who began the first mile of the journey.

The 80,000 were transferred from the surrey to a well geared vehicle for the final part of the trip, all holding on to the same objects and aims.

"P. E. O. wishes to be, and intends to be on the move. We can do this if, and only if, we cling to the ideals of our founders", she said. "We pray that P. E. O. will go on to higher accomplishments. Our message today, is one of moral and spiritual value. We are always looking for the end of the road — but may we never reach it. There is no end to that P. E. O. road."

Another past president of Illinois State Chapter has been added to the lengthy list. Mrs. Mary Crane Beatty received her credential from the Supreme Chapter President, who read the privileges and responsibilities which accompany it.

The Illinois State Officers for 1944-45 are Mrs. Geneva Schroder, president; Mrs. Ruby E. Prince, first vice president; Mrs. Louise R. Waddell, second vice president; Mrs. Bessie S. Ballow, organizer; Mrs. Hazel V. Ziesel, recording secretary. Mrs. Jennie H. Rugh, corresponding secretary and Mrs. Blanche Lee, the new member of the board, as treasurer. Mrs. Haroldine Hazen, W, acted as official teller for election.

Greetings from former state presidents, unable to attend convention and from many state chapters were read by Mrs. Ziesel.

An invitation to hold the 1945 convention in Rockford, was given by Mrs. Elizabeth Corbridge, CJ, and by Mrs. Sara Minear, F, for the 1946 convention to be held in Quincy. The response was made by May Hartley DeMoney.

Convention closed with a silent prayer for those in the armed forces, followed by the American Prayer read by Mrs. Ruth Cruse.

Mrs. Schroder, who made a beautiful response as she accepted the president's gavel, urged the members to cling steadfastly to the ideals of P. E. O. and to offer daily a prayer for Peace.



Unless within my heart I hold
Abiding peace,
No league of nations can succeed
Nor will strife cease.
If I myself see every fault
In kin and friend,
The world may never see the day
When war will end.
—Eugenia T. Finn.

KANSAS

STATE CHAPTER CONVENTION

THE FORTY-SECOND ANNUAL convention of the Kansas State Chapter was held in Atchison May 4, 5, 1944, Wilma Beeler (Mrs. Lester S.) presiding.

All business meetings of the session were held in the First Methodist Church with official headquarters in the Atchison hotel.

The first meeting opened on the afternoon of May 4, preceded by a brief organ recital by Mrs. Genevieve Robinson.

The processional came down the center aisle to the music of Elgar's *Pomp and Circumstance*.

The Pledge of Allegiance was given led by Mrs. Madge Craig after which she led in singing the National Hymn.

Mrs. Mildred Brown in commemoration of the seventy-fifth anniversary of the founding of P. E. O. paid a particularly lovely and dignified tribute to the Founders. It was dramatized by a member appearing from off stage displaying a water color portrait of the Founder of whom Mrs. Brown was speaking at the moment.

The hymn sung was *Walk in the Light*, appropriately chosen since the convention theme was "Light through Darkness". The Kansas P. E. O. book plate was used to illustrate the theme page; the picture is of a woman her face toward the light of a star as she pushes ajar wrought iron gates.

Mrs. Beeler in her greeting as president spoke of the theme and dedicated the convention and its program to "Our P. E. O. sisters who serve and to those who have husbands, sons, daughters or brothers in the Armed Forces".

The theme of the devotional period on both days of the session was "Light through Darkness". On the first day Mrs. Dayl Hoover read from the Gospel the story of John the Baptist who came to bear witness of the Light.

A quorum was established by the report of the credentials committee, given by Mrs. Doris Rooney, that of the 151 chapters in Kansas, 120 were represented by delegates. Thus was the convention formally opened.

The President introduced Dorothy Weller (Mrs. Frank) first vice-presi-

dent of Supreme Chapter, who was the honor guest of the convention. Others presented were the Editor of the P. E. O. RECORD; the members of the state board; Grace W. Simpson, first vice-president; Vivian Rutter, second vice-president; Stella Clapp, organizer; Christine Davis, recording secretary; Grace Banta Dodt, corresponding secretary and Louise Varner, treasurer. She also presented her personal page, Mrs. Joyce Kuhl and the officers' page, Mrs. Beulah Akers.

A pleasant innovation the presentation of two honorary general chairmen, past state presidents who were members of hostess chapters, Mrs. Beatrice Clapp, J, and Mrs. Anna M. Searcy, AD.

The general chairman, Mrs. Maurine Altimari, and the convention board, Mrs. Alma Zimmerman, Mrs. Agnes Frantz, Mrs. Virginia Cleland and Mrs. Margaret McClaren, were presented.

There were six chapters in the convention hostess group whose presidents took a bow: Mrs. Bronna Day, J; Mrs. Julia Jackson, EB; Mrs. Josephine Baldwin, EE; Mrs. Alma Hitchcock, AD; Mrs. Margaret Sterett, EN; Mrs. Marguerite Chappell, EO.

Mrs. Altimari, general chairman gave the formal welcome to which Mrs. Simpson first vice president gave response.

Mrs. Grace Wolf, reporting for the dispensation committee, recommended that charters be granted to Chapter EY Wamego and EZ Coffeyville.

Mrs. Clapp, organizer presented the new chapters to the State. Mrs. Weller presented the charters and wel-

comed the chapters into the Sisterhood on behalf of the Supreme Chapter.

The charters were received by Anna Crawford, president of EY, and Anna Stoffer, president of EZ. The latter made the speech of acceptance.

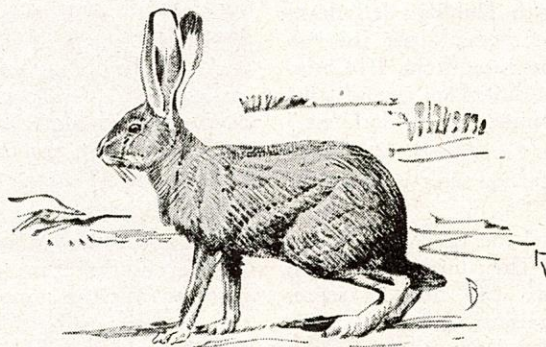
The reports of state officers showed faithful service on the part of all of them. To be president of any state convention in time of war presents many problems. The reports showed that progress had been made in all departments, while carrying in full measure the work of the war effort.

Mrs. Dodt read a letter of greeting from Mrs. Simpson, president of Supreme Chapter, and from 18 state chapter presidents.

The outstanding feature of the afternoon program was the address by Mrs. Weller under the title "A Diamond Trail". At the end of the convention season we are promised the ms. of this very fine address.

The assembly then adjourned to the Presbyterian church for the Hour of Remembrance which had been arranged by a committee of past state presidents, Mrs. Helen Chubb presiding. The service was held for 61 members who had died during the year. The Scripture reading and prayer was given by Edythe Wolff; the memorial roll call read by Mildred Kent; the 61 candles were lighted by Mary Hartley; Helen Chubb gave the memorial address To our Friends.

Marion Cavert sang two appropriate numbers, Myrtle Snyder at the piano. The prelude and postlude were played by Mrs. Genevieve Robinson at the organ. The evening meeting was



given to the Educational projects of P. E. O., by Mrs. Rutter second vice-president whose duties include promotion of these projects in the state.

As a special order however, the hour was prefaced by the presentation of the past state presidents, the introductions made by the chairman of the group, Mrs. Nellie B. Humphrey. These were the honor members who took a bow: Mesdames, Beatrice Clapp, Anna Searcy, V. Bess Smith, Ottis Strickland, Edna Young, Ozene Starr, Katherine Stelle, Hortense Scales, Helen Chubb, Myrtle A. Snyder, Edythe Wolff, Marion Cavert, Mary Hartley and the Misses Stella B. Haines and Maude Haver.

The Educational program opened with a group of voice numbers artistically given by Mrs. Marguerite Alpine Bass, an alumna of Cottey College, a member of Chapter N, Minden, Neb. The accompanist was Mrs. Ferris Close Akey.

The report of the Mamie Axline Fay Scholarship committee was given by Mrs. Nina Rhodes. She reported that upon approval of President Mitchell and in accord with a policy recommended by the North Central Association the scholarship award would be made for a two-year period. The 1944-1945 award was made to Georgia Jeanette Johnson of Council Grove.

Mrs. Rutter presented the work of the Educational Loan fund and gave interesting statistics on its achievements and Kansas' relationship to it.

The address of the evening was given by Dr. Walter Pope Binns, president of William Jewell College, Liberty, Mo. His subject was "Education for Citizenship". Having been a college administrator for many years, he spoke with authority.

Two piano numbers were played in brilliant style by Mrs. Mildred Hardman Raney of Chapter CR.

On the morning of the last day of convention, the opening hymn was *God of Our Fathers*, with Mrs. Marjorie Kliever leading the assembly singing.

Mrs. Elizabeth Hubbard led devotions with the theme Light through Darkness. She read from II Corinthians; 4 chapter St. Paul's words that "Light shall shine out of darkness."

Mrs. Madge Craig, with Mrs. Robinson at the piano, sang a group of two numbers.

The order of the day was election of officers. The final report on credentials gave 127 chapters represented by accredited delegates. The roll call by Mrs. Dodt, corresponding

secretary, showed 148 members present and voting.

With Virginia Cleland (Mrs. George) as chief teller, the election resulted in the choice of:

President, Grace W. Simpson, (Mrs. S. T.); first vice-pres. Vivian Rutter (Mrs. W. W.); sec. vice-pres. Stella Clapp (Mrs. A. L.); organizer Christine Davis (Mrs. H. O.); rec. sec. Grace Banta Dodt (Mrs. I. W.); cor. sec. Virginia Cleland (Mrs. G. L.); treasurer Mildred H. Raney (Mrs. N. A.). Mrs. Louise Varner declined re-election.

During election committee reports were given.

The welfare and trust fund report was given by Stella B. Haines, who also read the financial report of the treasurer, Mrs. Frances Wheeler Lutz, who was absent because of illness.

Report on the fund set up for use if and when there shall be a P. E. O. Home in Kansas, of which Edna F. Young is chairman, was read by Katherine Stelle. One element of the report was that the Nebraska P. E. O. Home is open to P. E. O.'s outside that state by special arrangement. Edythe Wolff gave report on war work in which was listed a marvelous total of work done by Kansas P. E. O.'s.

The recording secretary read the report of Mamie Axline Fay on the file of the P. E. O. RECORD which she is assembling. She is seeking a complete file from 1889, the same to be bound and placed in the Kansas historical library. Much regret was expressed because of the absence of Mrs. Fay and others of the absent, who usually attend the state conventions.

Mrs. Blanche Stucker reported that \$1363.91 had been given to the United Victory fund. Miss Haver gave the report on recommendations which had to do with detail of expense of delegates to Supreme Chapter Convention.

Mrs. Mary Butler read the courtesy resolutions and other routine convention reports followed. Mrs. Weller answered questions, but unfortunately for lack of time many went unanswered to the convention's loss.

At the beginning of the afternoon session, Mrs. Beeler introduced Mrs. Katherine Newcomb, initiated 53 years ago in the first chapter organized in Cameron, Mo.

Mrs. Reeves spoke on the subject "The Echo and the Song."

The chief feature of the closing meeting was the model meeting under the direction of the organizer, Mrs. Clapp.

Ten chapter representatives united in giving the demonstration.

The chapter personnel included:

President, Miss Marian O'Donnell, M; Vice-President, Mrs. Naomi Croy, BZ; Recording Secretary, Mrs. Helen Matson, EU; Corresponding Secretary, Mrs. Blanche Stucker, AU; Treasurer, Mrs. Jane Dunn Kimball, Q; Chaplain, Mrs. Nina Rhodes, H; Guard, Mrs. Daisy Irwin, DF; Candidate, Mrs. Doris Rooney, DZ; Cottey College Chairman, Mrs. Lois Lupfer, CB; War Work Chairman, Mrs. Venita Wesley, EK.

The plan was an interesting innovation but very well done.

Mrs. Roy Wolfe sang a group of Spring songs. The newly elected officers were installed by Mrs. Beeler. Mrs. Weller presented to the retiring president her credential, giving her a voice and seat not only in the Kansas conventions but in Supreme Chapter also.

Mrs. Humphrey presented Mrs. Beeler with a past president's pin, the gift of the past state presidents group. An invitation was extended and enthusiastically accepted to meet in Beloit in 1945.

The assembly sang "God Be with You till we Meet Again" and the gavel, in the hand of Mrs. Simpson, the new president, fell in adjourning a successful, well-conducted, war time convention.

THE RED CROSS ROOM

We thought perhaps she never should have come

Into this busy room, this quiet hum
Of lowered voices, careful hands at work.
We felt the aching sadness that must lurk
For her, in sight of bandages — the dread
Of unknown things. "Missing," the message said

"Missing in action" — her son, twenty-two.
She listened as we told her what to do
And showed her how. We marveled then
because

Her hands were firm, and steady on the gauze.

She seldom spoke, but soon a sort of smile
Came to her lips; and if once in awhile
Her eyes were misty, who were we to know?
She said at last when it was time to go,
"This afternoon has helped — what I have done

To bind the wounds of someone's brave young son

Has somehow eased the heavy weight of sorrow

For my own boy. I'll come again tomorrow."

And we who listened — awed, too moved to cry —

Thought we heard bugles blow as she passed by!

—Eleanor Owen Pennick,
in Kansas City Star

MICHIGAN

State Chapter Convention

Reported by
MARY LEHEW BROWN



Hi ho, hi ho, to Convention we should go
Come rain, come snow, or tornado
Hi ho, hi ho, hi ho,
Hi ho, hi ho, All hail to P. E. O.
We will, we must, we shall, I trust
To Convention go.

THE TWENTY-FIFTH ANNUAL Convention of Michigan State Chapter was held in Detroit, April 10 and 11, 1944.

After a rainy Easter, it was a joy to behold the sun and blue skies as the delegates turned toward the Statler Hotel to register on Monday morning. The entertaining Chapters, AE, Detroit and AF, Wyandotte, had arranged a special luncheon, which was served at noon in the Ivory room, complimenting the State officers and honor guests.

At one-thirty the entire delegation assembled in the Michigan Room for the Memorial Meditation, which was arranged by Elsie Moser and Chapter V, with appropriate devotions, music and tributes. Flowers were given by Chapters and friends in memory of the eleven members who had passed to the Chapter Eternal:

Mary E. French, Z; Riva Young, Y; Grace Kelleher, I; Edith Moe, A; Lillian Millard, A; Florence Abbott, G; Phyllis Howson, AH; Olive P. McMahon, A; Florence M. Taft, D; Marie C. Crissman, A; and Lois Steele, S.

Tribute was also paid our Founders.

A part of the processional and leading the Salute to the Flag were Nannette Allen, Second Class Girl Scout, and John Ford, First Class Boy Scout, whose mothers are members of AF.

Helen Evans Kibby, President of Michigan State Chapter, formally opened the meeting at 2:30 and appointment of the Convention Staff and Committees was read by the Recording Secretary, Margaret Snyder.

Elsa Clark chose for her devotional Scripture, Romans 12, her theme "There will be light again."

Jessie Bryan Haigh, speaking for the entertaining Chapters, graciously welcomed the delegates to which Lucile Osborn voiced her response in rhyme.

Mrs. Kibby introduced the honor guests, Bessie Raney and Winona Reeves, also Edna Plumb, Past President of M.S.C. now member of Board of Trustees of the RECORD, and Dorothy J. Livermore, Past President of M.S.C. and member of committee for Post War Planning, appointed by Supreme Chapter president.

Besides eleven Past Presidents of State, three official members of the first State Chapter were presented. Jennie D. Thomson, first President, gave a resumé of the minutes of the

convocation in 1919, and presented for historic interest figures showing a volume of work done by Michigan P. E. O.'s in World War I.

The President, in her greetings, referred to a letter written by Alice Babb in 1924, now kept as a treasure in the President's box.

The convention theme, "Cooperation and Growth," was ably handled by Helen Palmer who gave several prerequisites for keeping a happy atmosphere in the chapters; the importance of little courtesies; encouragement in endeavor; inspiration and achievement and support of our projects; "as one lamp lights another nor grows less, so nobleness enkindleth nobleness" — Lowell.

Two new chapters, BC, Detroit and BD, Flint, were presented and received charters from the State Organizer, Nellie Burgess. The two presidents, Kathleen Larson and Arkley Firth expressed their joy in "belonging" and assumed the responsibility of holding high the ideals of the Sisterhood.

Bessie Raney, speaking on the Subject, "Cross Roads," was reminiscent of the sign post P. E. O. has passed in the journey of 75 years. Starting in the "fringe trimmed surrey" era, P. E. O. was 38 years in reaching the Educational Fund Sign Post with Memorial Library near by and twenty years later the arrow pointed toward Cottey College. There will be no end to this road of achievement if we chose women for their worth, and not "to reform them."

Eva Annette Boyle, representing the Past State Presidents, humorously stressed the importance of "keeping life interesting."

Monday evening's dinner, tho served in the Ball Room, was delightfully informal. Low bowls of tulips, stock and daffodils and yellow candles graced the speaker's table, while the Silver Anniversary motif was carried out on the smaller tables with a silver bell surrounded by marguerites and ferns and tiny tinkling bells were attached to each place card, upon which was also printed a Grace composed by Helen Kibby:

"God bless our Sisters every day
With charm and graces true
To service real direct our way
For your world must have you."

Short speeches and music were interspersed between courses.

A short business meeting was called at which time Chapter AZ, Detroit, under the supervision of Nellie Burgess, Organizer, conducted a model meeting. Christine Fairgrieve was a

most efficient presiding officer and the meeting was indeed model.

Mrs. Reeves, gave an address, "The Echo and the Song," to quote, "The heart makes a record of everything good and the echo comes back in memory," in substance, if you wish the echo to linger make the tones of your good deeds and thoughts strong, purposeful and clear.

Imogene Fisher, First Vice President, in conducting a Cottey College program, presented Isabelle Heck, a former Cottey girl, who spoke of her experience "Inside Barbed Wires." After graduating from Northwestern University in 1940, Miss Heck went to Japan as a delegate from that school to a Student Conference in Tokyo and afterward toured Japan, Manchuria and Korea, French Indo-China and Thailand. Returning to Japan and thence to Shanghai, she was employed on the editorial staff of the Shanghai Evening Post, but after the war broke out, was interned at Chapei, close to Shanghai. She reported suffering many privations but on the whole, civilian prisoners were given more consideration than military prisoners. Their food consisted chiefly of rice and cabbage, with occasional servings of fish or buffalo meat and black bread. The dormitories were overcrowded and sanitation poor. The women wore overalls and everyone worked. Schools were organized by the internees by permission of the Japanese, for adult classes as well as for children and church services, both Catholic and Protestant, could be held. After several months internment, Isabel was repatriated on the Gripsholm, arriving in New York December 2, 1943, — quite an experience for a well bred young women twenty-four years of age. Isabel's mother Mrs. Ada Heck, Chapter AM, Grand Rapids, was introduced.

Mrs. Fisher reported one Michigan girl attending Cottey this year. Michigan girls have paid back Educational Loans to amount of \$28,600.00. 75 have paid their loans in full.

The delegates who went home for the night awoke Tuesday morning to find Michigan's perennial convention storm in full fury; snow, rain and wind made going hard but once back in P. E. O. atmosphere, all storms were forgotten.

Irene Jelsch gave Matthew's version of The Resurrection Story in her devotions.

Helen Kibby presided graciously and efficiently at all sessions and business was dispatched rapidly. In her annual report she mentioned entertaining Supreme Chapter Convention

in September 1943 as the high light of her year. Having a husband who wrote verse and did not forget to send her flowers also helped in trying times. She closed her report with a stanza from Nellie Burget Miller:

"Ours the Woman's part to wait with
banners high,
And head unbowed to see that stars
still shine,
In this our darkest night to know that
dawn,
Will come triumphant in the morn-
ing sky."

All Officers' reports showed that increase in duties, as well as pleasures, was due to assisting in the planning for Supreme Convention. Romaine Joslin, General Chairman of that Committee, gave a detailed account echoing many happy events of those never-to-be-forgotten days.

Nina Dahlstrom, Second Vice President, reported that the Carrie S. Budlong Welfare and Trust Funds now totals \$3419.72. No calls for assistance were received during the past year.

The Corresponding Secretary, Helen Kopka, reported 53 Chapters, with total membership 1216.

Ruth Draheim, Treasurer, had printed copies of her report, and each Chapter, through its President, received one. It revealed that \$1,114.90 had been contributed toward the United Victory Fund and \$808.00 to Cottey College. \$2,664.00, a surplus from the Welfare and Trust Funds, had been invested in War Bonds.

After Bessie Raney's talk on "The P. E. O. Victory Fund," telling what comfort the P. E. O. Clubmobiles are taking to the boys at the front, \$514.00 was proffered by Chapters and individuals from the floor of convention, thus raising the total to \$1655.90.

In presenting the Defense Activities in Michigan, Ruth Christianson listed 804 buying bonds and many in Civilian Defense, 300 in Red Cross sewing and knitting, 75 blood donors, 834 helping in war efforts, 310 sons, husbands and brothers in armed services, thirteen women in uniform, besides many other forms of service.

Isabel Holt, in compiling activities and program topics, as gleaned from Chapter Presidents' letters to the State President, found many assisting in U.S.O., Y.W.C.A., Red Cross and other philanthropies, while study of our Latin American Countries, as well as our Allied Nations, Post War Planning, Swedish and Chinese Cooperatives and youth movements, prevailed, "P. E. O. is proving a haven from the

(Continued on page 29)

MISSOURI

STATE CHAPTER CONVENTION

THE FIFTY-FIRST ANNUAL convention of the Missouri State Chapter was held in St. Joseph, April 25, 26, 1944. The session was held in the sanctuary of the First Presbyterian Church. The Rubidoux hotel was official headquarters.

The hostess group included Chapters K, Hopkins; L, Maryville; P, Stanberry; Z, Oregon; AL, Maitland; AN, Albany; BL, Grant City; DE, King City; DJ, New Hampton; DU, Rockport; EJ, Savanna; FF, Tarkio and Chapters BJ, BP, ED, EE, FL and FP all of St. Joseph.

Very gracious, generous hostesses they were.

The president, Mrs. Hazel L. Windle, presided at all meetings of the convention session. If one memory of this president lingers longer than another it will be of her unhurried poise that enabled her without seeming effort to complete every meeting on time with no item of the program undone. Only ability and forethought can achieve that in a so called stream line convention.

The convention theme was a phrase from the Objects and Aims "Radiate all light possible."

The dedication was "To our sons and daughters who have — who will or who are willing to sacrifice their lives that there may be peace."

The first meeting was called to order at 9:00 o'clock the morning of April 25, in P. E. O. orthodox fashion with a processional of officers and honor guests to Elgar's Pomp and Circumstance.

The pledge of allegiance to the flag was followed by a brief but brilliant speech under the title "The Truth Goes Marching On." The assembly then stood to sing that best of all our National songs, purely American in its lyric and musical setting the Battle Hymn of the Republic. All of the ceremony was a delightful partiotic prelude.

Mrs. Vina Ives Bowden, one of Missouri's past presidents of Supreme Chapter led the opening devotions using as do army chaplains "a brace of words." Mrs. Bowden chose four

words: love, life, freedom and prayer with a brief collect from the Bible on them.

The report of the Credential committee. Mrs. Cleo Campbell, chairman, established a quorum in that 169 chapters of the state's 198 chapters, were represented by accredited delegates.

The president declared the convention opened, and read the dedication, a part of which we have already quoted in this report.

Mrs. Windle introduced the guests of honor Dorothy L. Weller (Mrs. Frank), first vice president of Supreme Chapter; Mrs. Vina Ives Bowden, past president of Supreme Chapter; Winona E. Reeves, Editor P. E. O. RECORD and eleven honor members of convention, past state presidents, Mrs. Bowden, Mrs. Addie B. Parker, Mrs. Allene Smith Weary, Mrs. Lottie B. Duckworth, Mrs. Ruth Sanders Fowler, Mrs. Emily Hensley Dowell, Miss Florence Turner Porter, Mrs. Margaret W. Hillyard, Miss Fannie Hope and Mrs. Maud C. Elliott.

Mr. Hargrove, of the St. Joseph Chamber of Commerce was admitted and brought a very friendly welcome on behalf of the city.

Mrs. Vera Lou Biggerstaff, first vice president gave a grateful as well as a witty response.

The dispensation committee, Mrs. Oletha Daniel, chairman, recommended that a charter be granted one new Chapter HB, Sikeston.

The new chapter was presented to the state by the organizer Mrs. Hattie Holland. The charter was presented by Mrs. Weller who welcomed the chapter into the Sisterhood on behalf of Supreme Chapter. Mrs. Margaret Hilliard welcomed the chapter on behalf of the state.

Mrs. Jean McCord, president of the new chapter, having been thus welcomed gave an appreciative response.

The president in announcing the order of business, reports of state officers, explained that she had not forgotten their introduction earlier in the program but had wished to present them as they gave reports.

She paid high tribute to every one of them for ability, cooperation and devotion to their several tasks. Mrs. Biggerstaff presided during the report of Mrs. Windle the president. Then followed Mrs. Biggerstaff's report as first vice president; Mrs. Louise M. Reals, second vice president; Mrs. Hattie G. Holland, organizer; Mrs. Mabel C. James, recording secretary; Miss Ruth Fitzgerald, corresponding secretary and Mrs. Doris McKay Scott treasurer.

When appears the printed minutes of this convention, there will be recorded the excellent work done by all of them.

There followed other interesting presentations of those who contributed to the smooth running of the wheels of convention.

The parliamentarian, Mrs. Edith Zimmerman, a past president of the National Association of parliamentarians, she who knows all the answers, was introduced.

Mrs. Minnie Springer, general chairman of convention who had appeared earlier on the program as she introduced Mr. Hargrove, was now given a generous hand on her own account. She introduced the others of the convention board, Mesdames Minnie Springer, Mabel Thames, Evelyn Goakins, Lena Meyers, Mayme Minton.

The presidents of the 18 hostess chapters and the seventeen who served as chairmen of committees all took a bow to applause.

Miss Helen St. George, assistant to the recording secretary, the chief guard, Mrs. Helen White and the chief page, Mrs. Pauline K. Shy all were given recognition, as was Mrs. Upshaw, the presidents personal page. Mrs. Nora Mairs in whose home the first chapter in Missouri was organized, Mrs. Jane James Tatlock, the recording secretary's page were also asked to stand for recognition.

The convention rose to honor Mrs. Weller who as representative of Supreme Chapter gave the outstanding address of the entire convention session in The Diamond Trail. Mrs. Weller always gets and holds her audience as she did on this day.

At 1:00 o'clock a Cottey College luncheon was given in the Crystal room of the Rubidoux hotel at which Mrs. Biggerstaff presided. In the program that followed Mrs. Maud Elliott gave the invocation, followed by assembly singing of Cottey Alma Mater.

Mrs. Louella Bailey reported for the Nina Shearer scholarship committee and introduced the young girl

to whom the award had been given, Ann Elizabeth Kunkle.

Cottery girls give the lie to "the beautiful but dumb" slang phrase. They are all top-liners from the high schools and all might easily have won not only a scholarship award but a beauty contest award.

Mrs. Biggerstaff as state Cottery chairman gave detailed report of the state's gifts and work for the school. A scholarly as well as a practical presentation of "Place of Junior College in Post War Educational Plans" was given by Miss Nell Blum, Dean of the Junior College of St. Joseph.

The afternoon meeting in the Presbyterian church opened with assembly singing led by Miss Isabel Nelson who was the able leader of convention music.

It is almost weird the way P. E. O. conventions, all of them, hang breathless in attention to the model meeting. It was so this time, as Chapter K, Hopkins gave an excellent presentation, under the direction of Mrs. Holland, state organizer, Mrs. Phyllis Mutti, president of Chapter K presiding.

Following words of commendation for the chapter by Mrs. Weller, Mrs. Reeves spoke on the subject "The Echo and the Song."

The afternoon closed with the Vesper Memorial held for 75 members who had died during the year.

The program had been arranged and was given by members of the six chapters of Springfield.

Mrs. Lucile Wise was chairman of the brief but beautiful service.

Mrs. Gertrude Nelson played Handels Largo and Mrs. Wise gave the memorial tribute. Mrs. Ethel Leslie lighted candles and the roll call of memory was read by Mrs. Edoline Dickey and Mrs. Gladys Nicholson assisted by Mrs. Malvenia McDonald and Mrs. Beatrice Whisennand.

The program closed with Malotte's composition of *The Lord's Prayer* sung by Mrs. Esther Brock.

In the evening was held a formal banquet, for which hundreds of reservations were made, among them only two men. Tradition is that at the convention banquet only one of "the cloth" shall offer the invocation, so at the speaker's table there sat a B. I. L., Dr. A. Q. Williamson. To be sure Mrs. Weller was tops in the matter of honor guests but a man ran her a close second if applause be an index. That person was Mr. J. E. Windle, husband of the State President.



Miss Margaret Campbell, with Mrs. Gertrude Nelson at the piano sang *I Love Life*.

A fine address, *I See a Star*, was given by Ada Mead (Mrs. Charles), a past president of Nebraska State Chapter.

Mrs. Minnie Springer, general chairman of convention, presided with happy introductions, in the program.

Following the dinner was held the meeting for election of officers which resulted in the choice of President Vera Lou Biggerstaff (Mrs. J. W.); First Vice Pres., Louise M. Reals (Mrs. W. H.); Sec. Vice Pres., Hattie M. Holland (Mrs. E. R.); Org., Mabel C. James (Mrs. E. F.); Cor. Sec., Mrs. Minnie Springer; Treas., Doris McKay Scott (Mrs. I. L.).

With Mrs. Gretchen Dickson as chief teller and Mrs. Ruth Fowler as advisor, the election moved smoothly and quickly.

Mrs. Maud Elliott who had led the delegation to the Supreme Chapter convention in Detroit gave in rhyme reminiscences of that meeting. It was a happy memory she brought.

Committee reports were given: Finance, Mrs. Hillyard; Welfare and Trust, Mrs. Grace Marcell; Year books, Mrs. Reals; By-Laws, Mrs. Holland; Chapter reports, Miss Louise Comegys; official reports, Dr. Effie Soloman and Amendments, Miss Florence Porter substituting for Mrs. Blanche Temple who was absent because of illness.

The final meeting on the morning of May 26 opened with a lovely devotional period, *The Glory in our Task*, led by Allene Smith Weary. That there may be a glory was justified in a collect of Scripture.

Mrs. Weller answered the questions in the box, every answer backed up by law and established precedent quite like a court of law. No doubts were left on any point. Mrs. Vinita Hunt gave an appreciative courtesy report.

There were letters read from Mrs. Simpson, president of Supreme Chapter; from Hallie A. Newell lovingly remembered by everyone present; greetings come from many states and absent members. Special air mail letters were voted to be sent to the two absent past presidents of Supreme Chapter, Mary D. Lawrence and Hallie Newell.

Emily Hensley Dowell reported that the past state president's group is assembling a complete file of printed convention minutes for binding to be added to the state reciprocity bureau. She requested particularly the copies for 1901 and 1903.

An invitation was given by Gretchen Dixson in behalf of Group 3, to hold the 1945 convention in Kirksville which invitation was accepted.

Mrs. Windle gave a brief good bye if it may be so called, as an officer of the state, all of it held by the delegation to have been good work well done.

Mrs. Weller installed the officers and gave to Mrs. Windle her past presidents credential.

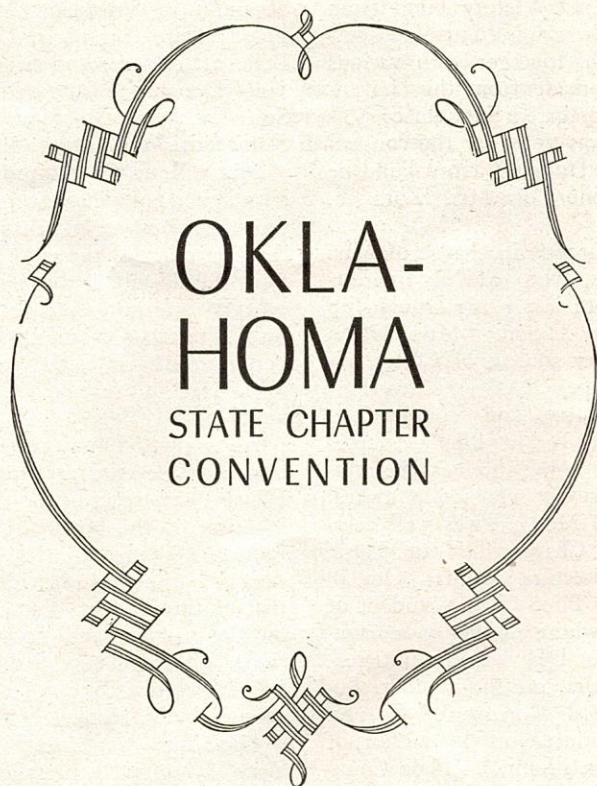
Mrs. Biggerstaff gave a beautifully expressed thank you for her honor. With *Blest Be the Tie*, the convention was formally adjourned.

A Victory luncheon followed adjournment at which in the absence of Mrs. Bertha M. Hanley, state chairman of Womans War Work in Mo. was presided over by Mrs. Hillyard. She read Mrs. Hanley's detailed report which showed a marvelous amount given and done for the war effort.

Mrs. Weller as chairman for Supreme Chapter of the P. E. O. war effort in the United States, Canada and in Hawaii gave both information and inspiration.

Mrs. Patricia Solander, a former senator of Kansas, now of the Kansas highway commission, spoke on the subject *Our Silent Fortresses* in which she analyzed and gave the source of every sentence in *The American Creed* written by William Tyler Page. The sources whence that Creed came are the laws and precepts of the Founding Fathers, the fortresses of the American Republic.

The program was made colorful and real in its patriotic effort by the presence of a Wave, a Wac, a Spar, a Red Cross representative, and all the varied uniform wearers of transport, gray ladies and all who serve under U.S.O. The luncheon was a real demonstration of P. E. O.'s interest and work for Victory.



Reported by
MARTHA J. HULEN (Mrs. H. E.)

Date — April 18-19
Place — Tulsa
Theme — Service.

SEVERAL PRE-CONVENTION activities ushered in the Thirty-Sixth Annual Convention of the Oklahoma State Chapter, which, because of difficulties of transportation due to gas rationing, and because of lack of hotel facilities in the resident towns of the hostess chapters, was held in Tulsa, April 18th and 19th, at the Boston Avenue Methodist Church, with Chapters AW and CH, Bartlesville, BC, Fairfax and CG, Vinita acting as hostesses.

A luncheon for the State Board, Honor Guests, Past Presidents, General Chairman, Hostess Presidents and Hostess Chairmen was held Tuesday noon in the Junior League Tea Room, presided over by Mrs. Lucile Thurman, General Chairman. Polly Shanklin, BC, extended greetings to the Honor Guests and the official Family.

During registration hours, at the Adams Hotel, headquarters of Convention officials and guests, a delightful tea was served by members of the Tulsa chapters.

Tuesday evening a banquet was held in the Boston Avenue Methodist Church, again with Mrs. Lucile Thurman, General Chairman, presiding.

After the Invocation by Mrs. Alice Rowland, introduction of Honor Guests, State Board and Past State Presidents was followed by greetings extended to the convention by Co-chairman, Mrs. Irma Sutton. Mrs. Vera Holding, CE, entertained with delightful selections of her own verse from her book entitled "Tumbleweeds." A group of vocal numbers by Mrs. Alberta Ringo, AW, accompanied by Mrs. Maurice Loriaux, of Bartlesville, brought the banquet to a pleasing conclusion.

The first session of the convention convened immediately after the banquet, in the sanctuary of the church. After the Processional the Pledge of Allegiance to the American Flag was led by Mrs. Jesse Bryant, followed by assembly singing of "God Bless America" under the direction of Mrs. Alberta Ringo, who, with her accompanists, Mrs. Flora Gill and Mrs. Bess Gowans, contributed so greatly to the music of the convention.

Mrs. Barbara Chamberlain, capable and gracious State President, presided at all sessions of the convention. In her address she reminded her listeners that due to war emergencies many of the usual features of the convention had to be omitted. She spoke with appreciation of the splendid coopera-

tion and marvelous response she had received from the chapters over the state, of the three new chapters organized during the year, and of the newest P. E. O. Project, War Work, and the United Victory Fund, with a goal of \$2,000.00.

Devotions by Mrs. Helen B. McCain, Past President of Oklahoma State Chapter, stressed unselfishness in service.

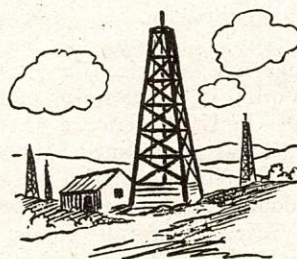
Formal opening of the convention brought introduction of Mrs. Carrie B. Simpson, on her first visit to Oklahoma as President of Supreme Chapter; Mrs. Winona Reeves, beloved Editor of the RECORD; a tribute to Mrs. Zora Y. Knight, Past President of Oklahoma State Chapter, Past President of Supreme Chapter, and Chairman of the Board of Trustees, Cottey College, whose absence from the convention was deeply regretted, and introduction of Mrs. Nell Farrell Stevenson, Past President of Oklahoma State Chapter, and Chairman of the Board of Trustees, P. O. E. RECORD.

State Board members presented were First Vice President, Mrs. Margaret B. Anderson; Second Vice President, Mrs. Alice Sanders; Organizer, Mrs. Ora B. Floyd; Recording Secretary, Dr. Mary R. Bell; Corresponding Secretary, Mrs. Jane Donahue; Treasurer, Mrs. Margaret Lillibridge; Historian, Mrs. Alma Shideler.

The fourteen Past State Presidents attending convention were introduced by Mrs. Alma C. Shideler.

A gracious welcome to Convention by Mrs. Lucile Thurman, General Chairman, evoked, in response, an expression of appreciation of the fine work done by Mrs. Thurman, as Chairman, and Mrs. Irma Sutton, as Co-Chairman, who, together with their convention committees, so ably planned and executed the many details of the convention.

Charters were presented to three new chapters organized during the year. Presentation was made by Mrs. Ora B. Floyd, Organizer, with re-



sponses by Mrs. Grace Clark, for DH, Tulsa, Mrs. Betty Roberts, for DI, Anadarko, and Miss Zella Morton, for DJ, Durant.

The report of the Educational Loan Fund, given by Mrs. Alice Sanders, Second Vice President, showed \$828,352.45 in the Fund; number of beneficiaries of the fund from 1907 to March 1, 1944, 8,778, with 42 Oklahoma girls included in this number, representing a loan of \$16,110.00; number of chapters contributing to Cottey College Fund during the year 1943-1944, 109; gifts to Cottey, \$2,349.20.

Devotions for the second day of the convention were in charge of Mrs. Allie Conner, who developed the fact that we must live and keep our sanity in spite of the times; that we must find a greater understanding of the youth who are participating in the war, and that the way we live within ourselves determines our relations with the world.

Corresponding Secretary, Mrs. Jane Donahue, reported the number of active members March 1, 1944, as 3,175, an increase since last report of 169 members by initiation, 86 by dimit and 11 by reinstatement; lost by dimit 85, death 20, retirement to inactive list 19; number of chapters active March 1, 1944, 110.

A comprehensive report of the Recording Secretary was presented by Dr. Mary Bell.

Mrs. Margaret Lillibridge, as State Treasurer, showed \$1,837.90 in the Victory Fund, and a total of \$6,500.00 U. S. Treasury Bonds owned by the Oklahoma State Chapter, with a total of cash and securities of \$23,758.85.

Substituting for Mrs. Winona McPheeters, Mrs. Naomi Massey gave the Welfare report for the year, which included gifts to Cottey of \$2,349.20; Victory Fund \$2,648.75; gifts from 109 chapters, of \$632.83; U. S. Treasury Bonds, \$1,800.00, with a grand total of \$5,014.00.

Due to the absence of Mrs. Anne Graves the report of Women's War Work in Oklahoma was given by Mrs. Jerry McKinney, the high spots of which report were: 1,914 members participating in various forms of war service; enrolled for Red Cross work — Knitting 512, Sewing 447, Surgical Dressings 766, Nurse's Aide 39, Canteen Work 131, other forms of service 229. In USO there are 451 registered; dollars contributed \$3,988.85; Civilian Defense, number registered 306; dollars contributed \$1,258.00; dollars invested in war bonds, certificates and stamps, \$2,153,187.10.

To the P. E. O. Victory Fund from 93 chapters there was contributed \$2,698.75, which, together with various contributions made from the convention floor aggregated the sum of \$3,010.00. It was voted by the convention that this United Victory Fund be given in honor of Mrs. Zora Y. Knight.

Cottey Hour was in charge of Mrs. Alice Sanders, who read an interesting letter from last year's scholarship winner, Julia Dixon. Miss Helen Paris, a former student of Cottey, related her experiences and reactions to life at Cottey, and Tommy Lou Campbell, of Bartlesville, was presented to the convention as the winner of this year's scholarship award.

The Model Meeting was well demonstrated by Chapter DH of Tulsa, under the direction of Mrs. Ora B. Floyd. Mary Ellen Carr, a student of Cottey, and whose mother is a member of Chapter DH, was the initiate.

Called to the convention floor, Lucile Ellingwood Morrow, of Chapter X, was introduced as the author of the newspaper column "A Plain Country Woman." She told in a few words something of her impulse to write her column, and of the material which she uses.

Recognition of out of state P. E. O.'s brought greetings from Missouri, Arkansas and Texas.

Two very enjoyable vocal numbers were given by Miss Mabel Beck, of Miami, accompanied by Mrs. Grover Dyer.

"The Echo and the Song" by Winona Reeves, brought an inspiring message of our P. E. O. heritage and the thought that the influence of our lives continues on, just as the echo rings through the valley after the song is gone.

An impressive observance of the Hour of Memory took place Wednesday afternoon, in the beautiful Rose Chapel of the Boston Avenue Methodist Church, with Mrs. Nell F. Stevenson presiding.

Final affirmative action was taken on Recommendations and State By-Laws.

The final report of the Credentials Committee showed the number of chapters in the State, 111; chapters represented 107; chapters not represented 4; officers of Supreme present 1; officers of state chapters 7; Past Presidents of Supreme 1; Past State President 14; Delegates to Convention 107; Visitors 159.

Balloting resulted in election of the following State officers: President, Mrs. Margaret B. Anderson; First Vice President, Mrs. Alice Sanders;

Second Vice President, Mrs. Ora B. Floyd; State Organizer, Dr. Mary R. Bell; State Recording Secretary, Mrs. Jane Donahue; State Corresponding Secretary, Mrs. Margaret Lillibridge; State Treasurer, Mrs. Gladys Jones.

Mrs. Carrie B. Simpson answered a number of interesting questions from the question box during the election period. At the close of the election she installed the newly elected officers and presented the retiring State President, Mrs. Barbara Chamberlain, with credentials entitling her to a seat in Supreme Chapter conventions.

An invitation for the 1945 convention was cleverly presented by Mrs. Hazel Overstreet, of Ponca City, the location of the beautiful statue The Pioneer Woman. Mrs. Overstreet, dressed in a costume identical with that of the Pioneer Woman, appeared on the rostrum and gave the invitation. Other hostess chapters will be BG, Newkirk; CS, Shidler; AM, Gumption and AV, Hooker.

Greetings were read from Mrs. Zora Y. Knight, expressing regret that she was unable to be present. The home town of our retiring President, Mrs. Barbara Chamberlain, was well represented with greetings from numerous civic clubs of that city. State chapters of New Mexico, Arizona, Ohio, Michigan, Utah, New Jersey, Washington, California, Texas, Florida, Nebraska, Kansas, South Dakota, Missouri, The District of Columbia, and Chapter BM of Claremore, Oklahoma, sent greetings to convention.

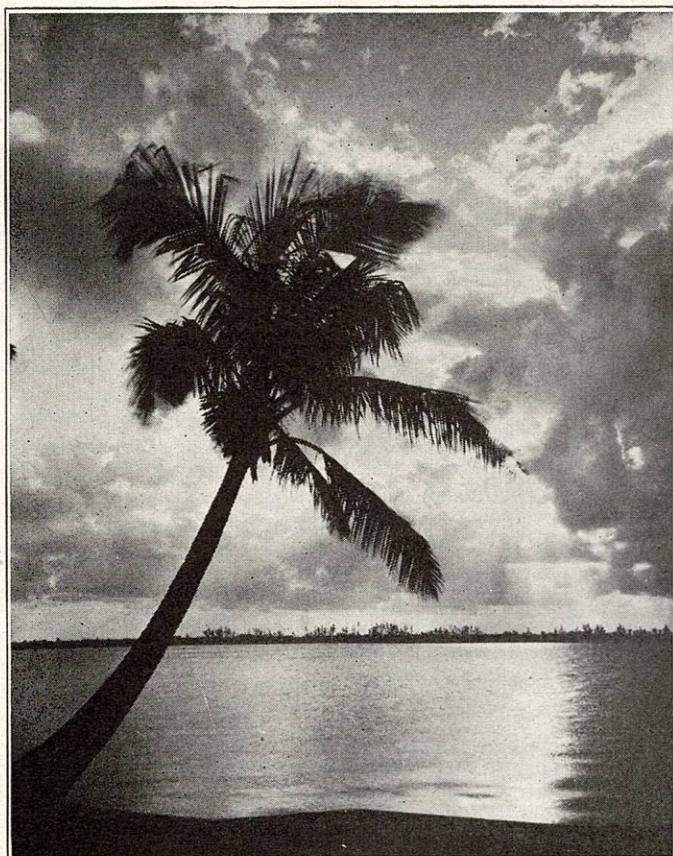
To those who so untiringly worked in such perfect cooperation under the efficient leadership of our own Lucile Thurman, the Convention Board, composed of Mrs. Irma Sutton, Co-Chairman, Mrs. Mary Ells, Secretary, Mrs. Marianne McKeithan, Treasurer, and the Committee Chairmen, high tribute was paid for preparing the machinery for the convention and keeping it geared to a successful conclusion. Many words of praise were heard for the musicians who so graciously contributed of their talent for the enjoyment of convention members and guests.

With the presentation of the gavel to the new President, the Thirty-Sixth Annual Convention drew to a close, as the assembled guests sang "Blest Be the Tie that Binds."

★

The crimes that are now being committed by man against man cry aloud
Not for vengeance, but for a complete change in our relationship one with another.

—George Lansbury



FLORIDA

STATE

CHAPTER

CONVENTION

Reported by
CLARA S. WAUGH, AA, Florida

"Let's . . . meet the time as it seeks us"—Shakespeare

THE SEVENTEENTH ANNUAL convention of Florida State Chapter was held in St. Petersburg, April 3, 4, 5, 1944, Dorothy Darrow, president, presiding. All meetings in the convention session were held in the public room on the mezzanine of the Princess Martha Hotel, which was convention headquarters. Officers, guests and delegates were hospitably entertained by Chapters B, Ft. Myers, and D, St. Petersburg.

Ruth Whitaker, state cor. secretary, assisted by members of the hostess chapters, began registrations promptly at 1:30 Monday afternoon. Lovely hand woven white and yellow bags containing necessary convention supplies were given to officers, guests and delegates.

Martha Hall, 1st vice-president, presided at the memorial service given at 4:30 in a beautifully arranged stage setting, with palms, candles and lilies. A large golden harp, which was effectively played during the service, added much to the following impressive program.

Prelude Corale-Komean
Lucille Wilson, S, New York
Memorial Message
Sarah MacGregor, Q
Vocal Solo Trust In Him, Hamblen
Cecile M. Beckley, D

Report of Memorial Committee
Metta S. Dorn, S
Harp Piano Concerto (First Movement) Grieg
Song of the Volga Boatman
Harriet Hoppe Walters
Tribute to Founders Lucca Lovell, Y
Memorial Roll Call and Tributes
Mrs. Florence Russell, B
Florence Freel, B
Mrs. Georgia Moore, D
Lucile Rise, D
Mrs. Belle Wheeler, G
Martha L. Henderson, G
Mrs. Lenore Westbrook, J
Martha Hall, S
Mrs. Laura Dickenson, O
Grace Harnly, O
Mrs. Mildred Reed, R
Cora Colburn, R
Benediction Charlotte Woodfin, D
Postlude Prelude in C Minor, Chopin
Lucille Wilson, S, New York

Miss Darrow called the convention to order promptly at 7:30, Monday evening, April 3.

Pledge of Allegiance to the Flag, led by Kate Youmans, A, was followed by the singing of The Star Spangled Banner, led by Rozella Smith, D, with Beulah R. Drake at the piano.

Dorothy Darrow gave a brief greeting in which she stressed the convention theme, "Opportunity", asking that it be considered in the light of the time as it now seeks us.

Devotions were given by Harriet Swapp, L.

A partial report given by Char-

lotte Scharfschwerdt, chairman of Committee on Credentials, established a quorum and convention was formally opened.

Members and visitors were welcomed by Mabel Whittemore, D, and Eunice Barnes, organizer, gave a brief and appropriate response.

The president introduced Carrie B. Simpson, president of Supreme Chapter, and eight past presidents of Florida State Chapter; Ida E. Stilwell, Nell D. Minear, Clara S. Waugh, Marguerite W. Callahan, Beulah R. Drake, Sarah MacGregor, Lydia Middleton and Adelaide Scharfschwerdt. Convention chairman and co-chairman, Elsie Daniel, B, and Martha Sellers, D, were also introduced.

Mary Jenkins, Chairman of Committee on Dispensations, reported two new chapters eligible for charters. Carrie B. Simpson, president of Supreme Chapter, presented the charters to Bernice Ziegler, president of Chapter Z, Titusville, and to Clara S. Waugh, alternate for Lydia Chandlee, president of Chapter AA, West Palm Beach.

The high light of the evening was a well prepared and exceptionally well delivered address by the honor guest, Carrie B. Simpson who spoke on the subject "We Go Forward".

A trio from Chapter D sang three numbers which were enthusiastically received.

Chapter T, Tampa, with Ruth Whitaker presiding, gave the model meeting in a manner that merited the high praise given by Mrs. Simpson. Remarks made by Lillian Gist, a member of Chapter T and one of Florida's most beloved P. E. O.'s, were especially well received.

Convention was called to order promptly at 9:00 Tuesday morning, April 4.

Pledge of Allegiance to the Flag, led by Bertha Glass, T, was followed by the singing of "America".

The regular opening included devotions by May H. Andrews, Y.

Minutes of previous meeting, read by Inda Post, rec. secretary, were approved.

Ruth Whitaker, cor. secretary, read greetings from many interested P. E. O.'s, including several state presidents.

Miss Lydia Chandlee, president of Chapter AA and daughter of Lydia Middleton, past president of Florida State Chapter, was introduced.

Florida state officers reported on the year's work, which reports will appear in the printed minutes. Florida now has 27 chapters, 826 active members and P. E. O. interests are being well attended to in spite of extra work done to aid the war effort.

Lydia Middleton, chairman of P. E. O.'s War Effort in Florida, gave an excellent report which included the following: Twenty one Florida P. E. O.'s are in uniform, 15 are blood donors, 149 are enrolled in Civil Defense, 647 are enrolled in Red Cross and allied agencies, and local chapters have contributed \$288.00 to P. E. O. United Victory Fund during the past year.

A detailed report of the work done by Chapter D was given by Alice Clover. Chapter D has held all day sewing meetings throughout the past two summers. During this time they have bought \$200.00 worth of material, cut 700 yards of cloth which they have cut into garments including crib quilts, layettes, dresses for four and six year old children, afghans and ski mitts. Some of these garments were given to wives of soldiers stationed near St. Petersburg and some were given to Bundles for America. Mrs. Clover said that members of Chapter D, one of Florida's larger chapters, learned to know each other better while sharing sandwiches and confidences.

Mrs. Hilda Maire, X, Ft. Lauderdale, reported that Chapters N and X had donated 3057 hours of work in the canteen and service center at Ft. Lauderdale.

Mrs. Katherine Moyer, D, sang "I Love Life" — Manna-Zucca and "Gloria" — Buzzi-Peccia.

Sara Martin, M, gave the first reading of recommendations before the meeting was recessed for lunch.

The long table, laid for the traditional presidents' luncheon, was lovely with floral centerpiece and unique flower basket place cards.

Past presidents of Florida State Chapter were seated at a special table where they conducted the annual business meeting of the Past Presidents' Club.

The afternoon meeting was opened at 2:00 o'clock.

Margaret Gahan, V, gave the report of Welfare and Trust Fund, which report will appear in the printed minutes.

Miss Darrow announced that Mrs. Simpson would speak on the subject "Cottey College" in place of Dr. Mitchell, President of Cottey College, who was not able to come to Florida to give an address as planned.

Mrs. Simpson spoke of the increasing interest in Cottey stating that the goal, to acquire facilities to accommodate 300 students, is in sight and much improvement is planned for the post war period.

Genevieve McNinch, treasurer, announced that a \$100.00 bequest to Florida State Chapter had been received. The bequest had been made by Carrie Foote Mann, first president of Florida State Chapter.

Miss Lucille Wilson, S, New York, delighted her listeners with two piano solos.

Dorothy Phipps, sec. vice-president, gave a summary of Local Chapter Presidents' letters. This interesting summary brought out the fact P. E. O.'s have courage and flexibilities capable of surmounting difficult situations caused by war and its attendant conditions.

Mrs. Cecile M. Beckley, D, sang, "The False Prophet" — Scott, "Spring is a Lovable Lady" — Elliot and "Friend O' Mine" — Sander-son.

The convention theme, "Opportunity", was carried out in addresses given by Sarah MacGregor and Adelaide Scharfschwerdt, past presidents of Florida State Chapter.

Mrs. MacGregor spoke on "Patriotism Plus", warning against any letting down of effort because the

hardest road, the road to peace, lies ahead, and to win the peace will take sustained effort backed by human determination plus divine blessing.

Mrs. Scharfschwerdt's subject was, "P. E. O.'s Opportunity to be Effective in Local Communities". She summed up her remarks in four points; knowledge is power — read both sides of every controversial issue; think clearly; discuss facts to clarify ideas; do something to make your influence felt where it will do some good.

St. Petersburg always has large numbers of visiting P. E. O.'s, and many were registered as convention visitors. Miss Darrow asked visitors to stand to be recognized. One of these visitors, Mrs. Elizabeth Palmer, Chapter B, Washington, D. C., was invited by the president to speak. Her remarks about the founders, four of whom she knew personally, were messages of inspiration beautifully expressed.

The hostess chapters, B and D, entertained members, visiting P. E. O.'s and B. I. L.'s at a reception and musicale on Tuesday evening. Mrs. Simpson added a serious note to the entertainment in her short talk on "Post War Planning". Delicious cake and fruit punch were served.

The closing meeting was opened promptly at 9:00 Wednesday morning, April 5.

The regular opening included devotions by Nell Archer, Q.

Sara Martin read the final report on recommendations and the convention, with the consent of the finance committee, voted to add \$400.00 to the bequest of Carrie Foote Mann and establish a \$500.00 Cottey scholarship fund, preferably for a Florida girl. Also to give \$96.00 to Cottey College Fund to bring this year's donations from Florida members of P. E. O. to one dollar per capita, and to give \$100.00 to the United Victory Fund.

Mabel Alsop, O, gave the historian's report.

Chapters I and H invited the convention to meet in Jacksonville in 1945.

Ruth Whitaker reported 63 members responding to roll call.

With Lydia Middleton as chairman of tellers, the election moved rapidly, with the following result: President, Eunice Barnes, W, Lakeland; First Vice-Pres., Genevieve McNinch, D, St. Petersburg; Sec. Vice-Pres., Ruth Whitaker, T, Tampa; Organizer, Dorothy Phipps, I, Gainesville; Rec. Sec., Martha

Hall, S, Orlando; Cor. Sec., Margaret Gahan, V, Orlando; Treas., Martha Louise Henderson, G, Lake Worth.

Final committee reports were read and filed.

During election Mrs. Simpson answered questions drawn from a beautifully decorated white and yellow box topped with a miniature green bench, exact replica of the many that line the sidewalks of St. Petersburg.

The newly elected officers were installed by Mrs. Simpson, president of Supreme Chapter who also presented Miss Darrow with her past president's credential.

The session was closed with the singing of "Farewell", Florida's traditional closing song.

+

No vision and you perish
No ideal and you're lost,
Your heart must ever cherish
Some faith at any cost.
Some hope, some dream to cling to
Some rainbow in the sky,
Some melody to sing to,
Some service that is high.

—Harriet Du Autermont.

+

TWO CENTS WORTH OF SEED

"Two cents worth of seed." So spoke my mother, as she stood gazing at the bed of pansies, alive with bright, sparkling, flower faces — blue, lavender and royal purple, brown, maroon and yellow. "All that from two cents worth of seed."

A Norwegian neighbor sat in our kitchen, talking with Mother. She had a gentle dignity that somehow precluded any laughter at her difficulties with the English language. She was telling my mother about her friend, not long in this country, and lying helpless with the dread, white scourge, T. B. And now — tragedy heaped upon tragedy — her little three year old son lay dead; no friends to comfort, no flowers to soften the grief. Did Mother have any flowers? Yes, Mother had a few. She would see what she could do.

She came in from the garden, her apron sagging with the load of bright pansy faces, every one stripped from the little bed. All that long afternoon we worked, weaving the velvety blossoms into a wreath: forming the base with the long stemmed ones, filling in the top with the short; shading blue into lavender and deep purple, maroon to brown and yellow, and back into lavender again; then wrapping the whole in cold, damp cloths, and placing it in the cool cellar. On the morrow it was carefully packed

CONVENTION NOTICES

State, Province and District Chapter Convention Dates

1944

STATE	DATE	CITY	HOTEL
British Columbia	June 3	Victoria	Empress Hotel
Colorado	June 6 & 7	Colorado Springs	Broadmoor Hotel
Idaho	June 6 & 7	Twin Falls	Rogerson Hotel
Montana	June 9 & 10	Butte	Finlen Hotel
Oregon	June 6 & 7	Eugene	Eugene Hotel
Washington	June 6 & 7	Seattle	Olympic Hotel
Wisconsin	June 20 & 21	Superior	Superior Hotel
Wyoming	June 15, 16, 17	Cheyenne	Plains Hotel

CARRIE B. SIMPSON (Mrs. Howard E.), President Supreme Chapter

WISCONSIN

The twenty-seventh Annual Convention of the Wisconsin State Chapter will be held in Superior, June 20 and 21, 1944, in the Hammond Avenue Presbyterian Church, with Chapter AD as hostess, assisted by Chapter R, Richland Center.

Our Honor Guests will be Mrs. Carrie B. Simpson, President of Supreme Chapter, and Mrs. Winona Evans Reeves, Editor of The P. E. O. RECORD. Honor members will be Mrs. Alice Rinehard, Member of the Board of Trustees, Supply Department of Supreme Chapter, and Past Presidents of the Wisconsin State Chapter.

Registration of and reception for early arrivals will be held Monday, June 19th, at 8:00 p.m. at Convention Headquarters. Registration will continue and committee meetings will be held from 8:00 to 10:30 a.m., Tuesday, June 20th. The Hour of Remembrance will be held at the Central Methodist Church at 11:00 a.m. The opening session will begin at 1:15 p.m.

The Convention Chairman is Martha Wiesner (Mrs. Val C.), 1015 North 17th Street, Superior. She will gladly furnish any desired information.

The hostess chapters and the State Board extend a cordial welcome to all P. E. O.'s.—Leone B. Schroeder, President of Wisconsin State Chapter.

+

COLORADO

The Colorado State Chapter convention will be held at the Broadmoor Hotel, Colorado Springs, Tuesday and Wednesday, June 6th and 7th. The guests of honor will be Mrs. Carrie B. Simpson, President of Supreme Chapter; Mrs. Winona Evans Reeves, Editor of the P. E. O. RECORD; Miss Marjorie Mitchell, President of Cottey College and Mrs. Chellie Stevens Wright, past president of Supreme Chapter.—Marguerite P. Meyer (Mrs. E. R.), President Colorado State Chapter.

and sent on its mission of consolation.

The next day the neighbor came again, to tell how beautiful it had looked on the little, white casket, and how it had comforted the sorrowing mother, as evidence that someone cared.

And on still the next day, Mother stood looking at the little flower bed — filled with bright, pansy faces. For every blossom removed had been replaced by the generous hand of that

great and good mother, Nature. "I declare," said Mother, "there are more than ever." "All that," she mused, "from two cents worth of seed."

Looking back over the years, I reflect, "All that from two cents worth of seed," and from how much more — from the talent, wisely invested, and returned two fold; from the neighborly love, as exemplified on the Jericho Road. In short, it was from the Jesus' way, which was my mother's way.—Carrie Olmsted, Iowa.

ARKANSAS

STATE CHAPTER CONVENTION

Reported by
DOROTHY HILLERY, F

THE ELEVENTH ANNUAL Convention of the Arkansas State Chapter was held in Conway, April 7, 8, with Chapters E, Conway; M, Paris; and R, Newport, as hostesses.

Convention headquarters were in Wingo Hall, Arkansas State Teachers College, where all delegates were housed; the sessions were held at McAlister Hall with Dr. Ada Jane Harvey presiding.

Upon arrival delegates were presented kits containing all necessary convention materials.

At eleven o'clock the chapter delegates and visitors participated in the Hour of Remembrance under the direction of Mrs. Glenna Brothers, second vice-president. It was a quiet devotional hour. Prelude from *The Holy City* was played by Jewel St. John, U, convention pianist; reading of the Twenty-Third Psalm by Leila Kirshner; memorial message by Glenna Brothers; vocal numbers by Catherine Smith, Fon Richardson and Marion Slack; violin solo *Meditation* by Miss Jean Huffacker of Hendrix College.

Convention was formally opened at two o'clock with the procession of honor guests, Mrs. Bessie R. Raney of Chicago, second vice-president of Supreme Chapter, state president, past presidents, and officers.

The singing of the National Anthem was led by Catherine Smith, after which the president, Dr. Ada Jane Harvey, cordially greeted the convention and announced the theme "Altogether for a Better World." She stressed the opportunity in these times for service to our sisterhood and to the world. Dr. Harvey presided throughout the sessions with friendliness and enthusiasm.

Peace was the thought of the morning devotions, conducted by Mrs. Kate Eldridge of Augusta.

Honor guests, Mrs. Bessie R. Raney, second vice-president of Supreme Chapter, Mrs. Leila Kirshner, past state president, and member of board of trustees of Educational Fund, were introduced, as were the past pres-

idents of the state chapter, Dora M. Lynch, Mary Ellen Marshall, Mabelle Clendenning, and Elsa Vaught.

Dr. Harvey introduced the members of her state board in an interesting way, giving bits of personal history of each: Elizabeth Moore, first vice-president; Glenna Brothers, second vice-president; Dorcas Patterson, organizer; Geneva Colville, recording secretary; Byrle McKinney, corresponding secretary; Martha England, treasurer.

Mrs. Clara Boles, general chairman, was introduced and presented to convention the hostess chapters. Catherine Smith, M, graciously welcomed convention. The response was given by Miriam Kronenberg, S.

Mrs. Nelle Moore, Chapter V, was presented, and our program dedicated to her, honoring her fifty years of membership in the P. E. O. Sisterhood.

Mrs. Mary Ellen Marshall recommended that Chapter Z of Batesville, now under dispensation, be granted a charter. Mrs. Dorcas Patterson, the organizer, presented the chapter to the state and introduced the president, Mrs. Margaret Yeoman. Mrs. Raney, representing Supreme Chapter, gave a warm welcome to the new chapter and

added a few words of counsel, to which Mrs. Yeoman responded. The presentation of the charter to Chapter Z was made by Dorcas Patterson.

A feature of special interest was the model meeting, by Chapter Q, with Ruby Villines presiding, under the direction of Dorcas Patterson, state organizer. It was perfectly and beautifully done and won high praise from Mrs. Raney. She emphasized how it portrayed the real spirit of P. E. O.

An informal talk on the definition of a True P. E. O. was given by Mrs. Raney. Summarizing her talk, she instructed P. E. O.'s to be ever seeking deeper Faith, sweeter Love, constant Purity, finer Justice, and everlasting Truth.

Friday evening there was a formal dinner at the Teachers College Commons, with Miss Constance Mitchell, of Chapter E, Conway, presiding. Following dinner, guests proceeded to the drawing room of McAlister Hall, where a delightful program was given: vocal numbers were given by E. W. Packard of Conway and Mrs. Catherine Smith of Paris; Mrs. Marion Owen, pianist, and James de la Fuente, violinist, of the Hendrix College faculty, played several numbers

★ ★ ★ ★ ★ ★ ★ ★ ★ ★ ★ ★ ★ ★ ★ ★

beautifully. The program was climaxed by a unique interpretation of Negro poetry by Constance Mitchell, librarian of Arkansas State Teachers College, a member of Chapter E. The college atmosphere added a perfect note to the evening's entertainment.

On the second day of convention, the morning devotions were led by Mrs. Kathryn Eldridge, Chapter V.

Greetings and messages were read from Mrs. Carrie B. Simpson, president of Supreme Chapter, Mrs. Hazel E. Hine, executive secretary, state chapters, and from Mrs. Pearle Foster, past president, who was unable to attend the convention.

Mrs. Martha Connor, R, gave a lovely basket of flowers in memory of her mother, Mrs. Kate Campbell, past president of Arkansas State Chapter.

Glenna Brothers of Chapter I presented the state chapter with a bound volume of all its minutes since convocation ten years ago.

The report of state officers was the next order of business. These reports in their entirety gave the convention an idea of the scope of work accomplished by their officers, all of it indicative of work well done.

Leila Kirshner gave briefly the history of the Educational Loan Fund and suggested that all chapters keep a permanent record of loan fund girls.

The report of the State Welfare committee was given by Mrs. Lula B. Packard. She urged continued giving by the chapters so that the committee might be prepared for possible future emergency. The president appointed Mrs. Eva Jeryo, P, as the third member of the Welfare Board, and Mrs. Grace DuPree, X, chairman of State War Work.

Under the leadership of Mrs. Mary Catherine See, patriotic and sentimental songs, appropriate for the theme of the program, were sung by the assembly.

Mrs. Eloise Horner, N, conducted an interesting "Information Please" program in the form of a quiz on Cottey College.

Announcements were made from the floor of gifts by Chapter A, \$25.00 to Cottey and \$12.00 to United Victory Fund; Chapter V, \$25.00, as a tribute to Nelle Moore, to purchase picture for Arkansas suite, Cottey College; Chapter I, \$10.00 to Victory Fund; State Board, \$25.00 to Victory Fund in honor of the president, Dr. Ada Jane Harvey.

The outstanding feature of the convention was the address made by Mrs. Bessie R. Raney, who had for a subject "The Cross Roads." It was both timely and helpful, and issued a chal-

lenge to all P. E. O.'s. Mrs. Raney stressed the necessity of being and remaining conscious of moral and spiritual values as we ride down the highway of today, a road which has no end. She declared future achievements would be possible only if we cling to our ideals and instill them in our new members.

A resume of chapter letters presented by Mrs. Wilma Thornton, X, showed the varied programs, many philanthropies, and the great amount of war work done.

During the election Mrs. Raney answered questions from the yellow and white decorated question box and gave clear and satisfying answers to the many questions.

The election resulted as follows: president, Mrs. Elizabeth Moore, K; first vice-president, Mrs. Glenna Brothers, I; second vice-president, Mrs. Drocas Patterson, Q; organizer, Mrs. Geneva Colville, M; recording secretary, Mrs. Byrle McKinney, H; corresponding secretary, Mrs. Martha England, N; treasurer, Mrs. Kathryn Eldridge, V.

The newly elected officers were installed by Mrs. Raney, who also presented to Dr. Harvey her past president's credential. Elizabeth Moore made the presentation of a past president's pin from the executive board.

A brief benediction from Mrs. Moore brought to a close two happy days of a convention beautifully entertained.

"And now with purpose full and clear,

We turn to greet another year."

Convention Notes

On the evening preceding the formal opening of the convention, an informal dinner was given at Teachers College Commons, honoring Mrs. Bessie R. Raney, second vice-president of Supreme Chapter, and the five past presidents of Arkansas State Chapters. Following the dinner, an executive board meeting was held with Dr. Ada Jane Harvey presiding.

Celebrating the seventy-fifth year of the founding of the P. E. O. Sisterhood, a luncheon was served at Tabor Hall, Hendrix College, with Mrs. Mary Cox of Paris as toastmistress. A program, Then and Now, contrasting the status and activities of women seventy-five years ago and today, was cleverly given by Mrs. Lyde A. Robins of Conway. The anniversary theme was further carried out in the table centerpiece with yellow candles arranged to form the figure "75".

Chapter R of Newport was hostess at luncheon on Saturday, at Cen-

tral College. Mrs. Clyde Elliott presented an unusually inspiring program, using the word Love as an acrostic.

The hospitality of the colleges and their gracious cooperation with the hostess chapters in entertaining added greatly to the enjoyment of delegates and visitors.

Nelle Moore, to whom the program was dedicated, and her sister, Fannie Kurtz, who signed the P. E. O. Articles of Incorporation in 1893, were initiated in Chapter Q, Iowa. Nelle Moore dimitted from that chapter four years ago to choose the charter list of Chapter V, Arkansas.



AFTER THE SESSION

BEDROOM SCENE . . . after any convention . . . shades are drawn . . . bedside table looks like an emergency hospital tray. A half-opened luggage case bars the path to the door and clothes are strewn about.

Prone on the huge four-poster bed lies what is left of the once vivid president of the Suburban Liverwort Association . . . with an ice pack on her head and a hot water bottle at her feet.

Her husband enters the room with a glass of water in one hand and a couple of sedative tablets in the other. He stumbles over the luggage. His wife murmurs weakly from the bed, "Oh, darling, must you say such things when my head is fairly splitting from temple to temple?"

* * *

HIS WIFE, fresh from the wars and merrymaking and committees of the Fortieth Perennial Conference of the Eighth Biennial Convention of the Garden Gate Clubs, moans hysterically into her smelling salts, "Oh, go way."

Her back aches, her legs ache from walking miles of garden pilgrimages, her jaws are too tired from shouting above the gavel and the torrent of feminine chatter during meetings to ever move again (so she thinks) to answer his pettish, "You always come back from those conventions in a mess like this. Here take these pills!"

She cries silently, for her heart is heavy with grief and . . . secret worry . . . somehow she will have to make up that ten dollars she lost in the rush to the Barnstormers Banquet on that last too gala-gala night. And her head . . . her head . . .

Sleep comes at last. The drama is over. Peace . . . until another year.

—The Detroit Free Press.

★ TEXAS

STATE CHAPTER CONVENTION

FORT WORTH, TEXAS, "OUT where the west begins," was the scene for the thirteenth annual "Roundup" of P. E. O.'s on April 10th and 11th. The hospitable Texas Hotel was convention headquarters. Essential business, good fellowship, wartime activity, and service were the keynotes in an enthusiastic session with Chapters U, G, AM, and AP hostesses, Mrs. Otis Watt, AZ, president, presiding.

As a fitting tribute to the loyalty of sisterhood, the first program was the Hour of Remembrance, Mrs. Jennie Erlandson presiding.

The program included,

Prelude—"Ave Maria" Schubert
 Fine Arts Trio
 Arline Woodward, Violinist
 Rubi Marsh, Cellist
 Q'Zella Jeffus, Pianist
 Scripture and Prayer
 Mrs. Jenny L. Erlandson
 Solo—"Oh Lamb of God"
 Georges Bizet
 Eleanor Bryan Armstrong
 Memorial Message
 Mrs. Jenny L. Erlandson
 Roll Call of Memory

The hour was in memory of Mrs. Mary Calloway, B; Mrs. Florence Lawrence, E; Mrs. Belle Dyer, L; Mrs. Adele B. Bischoff, R; Mrs. Carrie W. Walker, U; Mrs. Mamie Mann, V; Mrs. Mary Warner, Z; Mrs. Lou M. Ashcroft, AB; Mrs. Phigenia Robards, AU; Mrs. Gertrude Olmstead, Mrs. Edna Hays, Mrs. Vennette Livingston, Mrs. Elizabeth Chearning, Miss Lela McMahon, Mrs. Zoe Collins, Mrs. Annie Studer, Mrs. Leta Spence, Mrs. Alpha Hundson.
 Postlude—"Largo from New World Symphony" Dvorak
 Fine Arts Trio

In the afternoon meeting of the opening day, Mrs. Ruth E. Delzell conducted impressive devotions especially timely for Easter Monday. "Worship through Music" was the motif. Mrs. June Adams, B, sang selections from Hyden's "Creation." She was accompanied by Mrs. Lynette Steed, B.

Mrs. Watt dedicated the program of convention "to my P. E. O. sisters, who wait and perhaps weep." Her impressive words set the convention theme Sacrifice.

She introduced Mrs. Carrie B. Simpson, President of Supreme Chapter and Dr. Marjorie Mitchell, Presi-

Marguerites among Bluebonnets

Reported by

MRS. JIMMIE WILSON WAIDE

dent of Cottey College, honor guests, and six past presidents of Texas State Chapter, Mrs. Ruth E. Delzell, Mrs. Essie B. Roots, Mrs. Phoebe B. Ulrich, Mrs. Vassie Shafer, Mrs. Carrie S. Gilbert, Mrs. Corinne P. Williams.

Mrs. Ida Short, G, Fort Worth, general chairman was introduced and she in turn announced special appointments as follows: Song Leaders, Mrs. Madeline Hemley, G, and Mrs. Elaine Hodgson, U; Assistant Recording Secretary, Mrs. Lorraine Withington, G; Chief Teller, Mrs. Faye Price, A; Assistant Teller, Mrs. Cornelia Richmond, E; Reporter to P. E. O. RECORD Mrs. Jimmie W. Waide, U; Reporter to Fort Worth Papers, Mrs. Bess Evans, AM.

Presidents of hostess chapters were presented to convention: Miss Constance Beach, U; Mrs. Gladys Addison, AM; Mrs. Lillie K. Adams, G; Mrs. Lena Maxwell, AP.

Mrs. Simpson's able and inspirational address was "We Go Forward." Remembered statements were, "There is no standing still. P. E. O. is not static. We do not lose ground. Factors in our progress are ability to think realistically and the accumulation of a store of character and culture. P. E. O.'s are *chosen*. Guard against confusion which destroys. Believe in God and a final power, resting upon justice and honor. There is a love beyond our love. He is able to keep that which we commit unto Him. Go forward!"

She emphasized the necessity for continued P. E. O. activity in a wartime Texas just as it was reported that out of the 51 chapters in the state 42 were represented by 70 delegates, with a total attendance of 148 in convention.

Mrs. Catherine Newman, state corresponding secretary reported that greetings had been received from 19 states.

At the banquet in the Bluebonnet Room Monday evening, Mrs. Martha

Bennett, second vice president, presided at an educational and Cottey College program. An address of welcome in verse was given by Mrs. Kathryn Rowser, AM, with a clever response by Mrs. Catherine Newman.

Principal feature of the evening was an excellent address by Dr. Marjorie Mitchell, President of Cottey. Miss Mitchell's timely subject was "Problems in Educating Women Now." Dynamic sentences were, "Neglect is as deadly as destruction. If we do not read books, we might as well burn them. We women hold cultural reins in our own hands. We need wise women to deal with post war problems."

Musical touches were added by Mrs. Madeline Hemley, G, soloist and Mrs. Virginia Groneman, AH, violinist. Mrs. Max Frank was accompanist.

On the final morning, committee breakfasts and a forum for delegates prefaced a business meeting in which reports of Presidents' letters, welfare and trust fund, Cottey Scholarship board, and Texas war work were special features. All reports showed outstanding co-operation and increased interest in these activities.

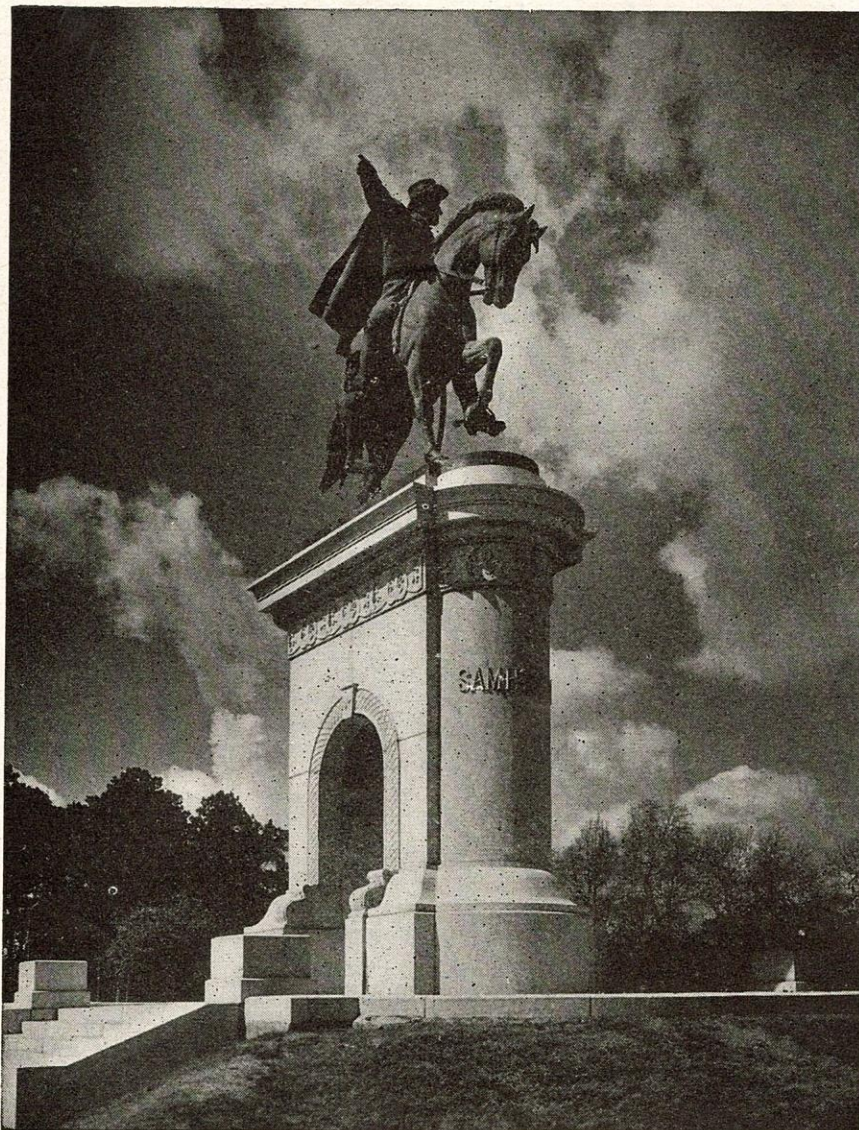
The war work report was of special significance. Texas P. E. O.'s have bought more than a million dollars of war bonds and stamps, and have contributed over twelve thousand dollars to war services, with about eight hundred members participating. Thirty-eight Texas P. E. O.'s are in uniform.

Mrs. Leta Turner, X, presided at the model meeting, conducted by members of Chapters, H, Q, X, Y, AL, and AU.

At the final afternoon session, new officers were elected, and Mrs. Simpson presided at the installation of: Mrs. Jenny L. Erlandson, President; Mrs. Martha Bennet, First Vice President; Mrs. Katherine Newman, Second Vice President; Mrs. Leila Lilly, Organizer; Mrs. Elizabeth Worthington, Recording Secretary; Mrs. Ruth Buttery, Corresponding Secretary; Mrs. Willie King, Treasurer.

An invitation was accepted to hold the 1945 convention in Texarkana.

Mrs. Willie King, U, as chairman



of the courtesy committee, gave expression in her report of the appreciation felt by the entire assembly for two wonderful days, spent in delightful association and accomplishment. Every P. E. O. carried away memories of shining hours, made bright by that

certain something which P. E. O.'s feel toward one another. A united Sisterhood working for Victory and looking toward Peace.

"Always with the coming of the morn
There will be joy, O heart, hold
this belief."

IT IS STILL GOD'S WORLD

Though men may desecrate the world with blood,
They cannot hurt the throbbing heart of earth.
The winds shall blow, and waking leaf and bud
Each spring eternally shall come to birth.
The rains shall fall, the stars light heaven's door,
And birds wing back to some safe nesting place.
The river weave its song against the shore;
Children be born . . . a credit to the race!
It is God's world . . . it shall be always so.
Though men play God, the green arms of the grass
Shall fold them close to make a field . . . bestow
Obscurity. This, too, shall come to pass!
For men are tenants, and a pound of sod
Is all they are! The world belongs to God!
—Eunice Mildred LonCoske

NELLIE P. RUNDLE DANKS 1862-1944

Mrs. Nellie P. Danks, first president of Illinois State Chapter a member of B, Clinton, Ill., died April 11, 1944, age 82 years.

Death came from complications following injuries sustained in a fall several weeks earlier.

She was born July 28, 1862. Her husband, Clarence W. Danks, died a number of years ago.

Following his death, Mrs. Danks continued his work in the abstract business.

She was a member of the Presbyterian church, a supporter of its activities.

Quoting from The Story of P. E. O.:

"To those who attended the Supreme Chapter convention in Lincoln, Neb. in 1903, there will ever be the memory of the woman who came forward to receive the charter for the new state chapter, Illinois. The beam of her smile as she faced the convention to thank them for the trust and honor which the state charter implied, that smile had a reflection in the face of every delegate in that great hall.

"When it came time to elect officers on the last day of Supreme Chapter Convention, Mrs. Nellie P. Danks, the first president of Illinois State Chapter was elected treasurer. She is perhaps the only P. E. O. who ever held a Supreme Chapter office while she was state president."

You see her smile still held as indeed it did to the last of her 82 years.

She attended many Supreme Chapter conventions and I believe all Illinois conventions since her initiation.

There are none finer in P. E. O. than was Nellie Danks.

+

Not how old you are, but how you are old.—Marie Dressler.

+

I'd rather be a has been
Than a might have been by far,
For a might have been
Has never been
And a has been was and are.

+

DENVER COTTEY CLUB

The Denver Cottey Club held its regular monthly meeting at the home of Louise Darnall (Mrs. E. M.). Chapter BI March 28, with Chellie Stevens Wright (Mrs. F. R.) Chapter AI presiding.

The retiring vice-presidents of all Denver Chapters introduced their incoming vice-presidents, who automatically become the club members.

Ruth Evans (Mrs. E. B.) Chapter CF, gave a splendid report of the benefits given at the Civic Theater the receipts of which make up our Educational Fund.

The election of officers resulted as follows: President, Viola Lee (Mrs. Ralph), Vice-President, Opal Hilliard (Miss); Treasurer, Ellen Devitt (Mrs. O. H.); Rec. Secretary, Marian Bryant (Mrs. D. R.); Cor. Secretary, Elizabeth Ferguson (Miss).

Upon adjournment a delightfully appointed tea was given with the State officers, a group of Cottey girls and their mothers and Denver unaffiliates as guests.—Elizabeth Ferguson.

The Educational Loan Fund

RUTH E. STOTLER (Mrs. F. L.), Chairman

Chapters may wish to recommend a girl for a loan during the summer months even tho they do not meet regularly during that period. This can be done officially, provided the request for a loan is read at least two weeks before it is voted upon. Both the meeting at which the application is read and the meeting at which the vote is taken may be called meetings. The vote shall be by written ballot.

The formal application blank for a loan must be completed and approved by the recommending chapter. It is not necessary to have a chapter meeting to accomplish this. The president and Educational Loan Committee of the chapter may complete and approve the blank without a chapter meeting for this purpose. This procedure is recommended in cases where the time element is an important factor.

Chapter BL of Moline, Illinois, reports that one of its former loan girls is now a member of the Army Nurse Corps. She is First Lieutenant Mary Charlotte Newton, in charge of an officer's ward at Camp Ellis, Illinois.

Chapter AK, Dayton, Ohio, reports that one of the loan fund girls sponsored by the chapter has been commissioned an Ensign in the Waves. She is Ensign Juanita E. Carter, now stationed at Radcliffe College, Cambridge, Massachusetts.

A HARP IN THE WINDOW

IT IS SOMETIMES TRUE that a single incident, an isolated act in the life of a man is in itself a character descriptive.

It was so with Ralph Waldo Emerson whose 141st anniversary fell this year on May 25.

He bought a house in Concord on the Boston turnpike, a house surrounded by pines and fir trees, with a garden and nearby a brook.

In the western window in his study in that house he set an Aeolian harp. Of it Van Wyck Brooks said "It sang in the spring and summer breezes . . . fitfully bringing to mind the melodious notes of the old bards and minstrels."

Emerson has been called the essayist, the prophet — the teacher of youth.

It is true that since his first volume

of essays was published young people have been influenced and inspired by them.

Perhaps he is more revered by scholars than by any other type. It was in 1837 that he delivered his famous Phi Beta Kappa oration at Harvard under the title The American Scholar, which was called by Oliver Wendell Holmes "The Intellectual Declaration of Independence."

When the Phi Beta Kappa fraternity established its magazine, they named it The American Scholar.

He was graduated from Harvard and then from the divinity school at Cambridge in preparation for the Unitarian ministry.

But at the end of three years he resigned, due to a theological difference on the sacrament of communion.

He then turned to the lecture platform; his published essays are really the manuscripts of his lectures, with a possible few exceptions.

Concerning his lectures it is said that the famous New England lawyer Jeremiah Mason was asked if he could understand Emerson, to which he replied "No, but my daughters can."

In the beginning he did not wish to write for publication until, as he said, he had put his thoughts into words and people had listened to them.

Conversation was one of the arts of his time; you remember that Alcott, he of the Transcendentalists, conducted conversaciones in which some social leader brought a group together, and Alcott (for a price) led in conversation on various themes. Emerson loved to talk to people, all sorts of people, in that way he developed his philosophies.

Rather early in his lecturing experience, he came to the middle west and had an engagement in Washington, Iowa.

The committee that went to meet him did not, among the passengers that alighted from the train, see anyone who looked like a Boston lecturer. They met a second train but no Emerson. When it came time for the evening meal he appeared at the hotel, having spent much of the day

REVELATION of OUR P. E. O. SECRET (Tune: Mairzy Doats)

I have a secret—
Uncles, aunts and cousins,
People by the dozens—
All would like to know—
Bud says I'm dizzy;
So does cousin Lizzie, when
I say P. E. O.

CHORUS

(Means) Pawzy dout and Palzy dout
and liddle Petzy dunyons,
When ma and her chapter meet,
Gab and eat. Yes
Pawzy dout and Palzy dout
And liddle Petzy dunyons,
When ma and her chapter meet
Gab and eat.

If the words sound queer
And crazy to your ear—
A little bit jumbled and funny, sing
Pas Eat Out and Pals Eat Out
And littl Pets Eat Onions. Oh
Pawzy dout and palzy dout
And liddle petzy dunyons,
When ma and her chapter meet,
Gab and ea-ett
When ma and her chapter meet,
Gab and eat.

—Clare Hagey, Michigan Convention

sitting on a log in a nearby wood talking to a local man of his own kind, discussing life, its tortuous path and ways.

Emerson was twice married to Ellen Louise Tucker, a girl of seventeen, who died in her youth. Following her death he spent several years in Europe. On his return he married Lidian Jackson of Plymouth.

Both contributed to his happiness, and brought a sympathetic, understanding attitude to his moods and tastes.

It is said, and truly said, that a genius in any field requires both patience and understanding in the routine of every day living. No biographer has said that Emerson was in any way erratic; he loved solitude and guarded it jealously. We think most often of Thoreau in connection with Walden Pond, but Emerson too had retreat there; he rested and read and dreamed and thought in the woods that surrounded the pond.

In his last years his memory failed almost totally, although there was no failure in his serene and unshaken dignity. In peaceful honor were passed his last days. He died April 27, 1882, his body at rest in Sleepy Hollow cemetery on the edge of Concord.

Life is short, but there is always time enough for courtesy.—Emerson.

★ THE P. E. O. RECORD

From The EDITOR'S DESK

All copy intended for publication, except advertising, and all changes to the mailing list should be sent to the Editor, Mrs. Winona E. Reeves, Park Lane Hotel, 2842 Sheridan Rd., Chicago 14, Ill.

TIMELY QUOTES

From the printed program of the California state convention we have lifted these quotations, every one of them suited to the thought of this our time.

"Whether in chains or laurels
Liberty knows nothing but victories."

"There sounds, and will not cease, The
prophet word of One who came from God
— There shall be Peace."

"God on our side, doubt not victory."

"By the Peace among our peoples
Let men know we serve the Lord."
—Kipling.

"How beautiful is Victory — and how
dear!"

"Ye shall go out with joy and be led
forth with Peace."—Isaiah.

► SOMETIMES, AND INDEED
it is usually so, that a significant
thing is done almost unconsciously
by a majority who do it, but that it
is done is the important thing.

A case in point is the presentation
to the Illinois State convention and
its acceptance there, of a collection
of museum pieces and valuable pa-
pers and documents, of the period
of the founding of P. E. O., seventy-
five years ago.

It is a collection of material that
sets the background of the life and
time of the seven college girls who
were our Founders.

Thanks to Chapter Original A and
in particular to Mrs. Florence Mc-
Kibbin, there are priceless articles
in the Memory Room of Old Main
of the same period. While there are
there many things irrelevant to the
founding period, the majority of
pieces are authentic. All of which,
the collection presented in Illinois
and the Memory Room collection
furnishes a sizable array of early
Americana.

As we have said, perhaps some
who said "pro" sitting in the ball-
room of the Palmer House in Chi-
cago on April 26, 1944 had little
thought of the dim years long gone
nor of the visionary years ahead.
However the birthday gift of Chap-
ter D, Chicago was accepted.

Emerson once said that "Every
institution is the lengthening shadow
of one man."

When this museum of material
of the immediate decade and those
before and after the period of the
founding of P. E. O. is a realized
fact, it will be the "lengthening shad-
ow" of Louise Weaver Avery, aided
and abetted by the chapter to which
she belongs, Chapter D, Chicago.

If you have read this far on the
Editor's page, if you have not al-
ready read in the this issue the fea-
ture "A Birthday Gift to P. E. O."
won't you read it now?

A magazine writer said not long
ago "Had I known what things to
save I should now be a millionaire."

Fortunate it is for future gener-
ations that there are those who do
keep and care for lovely articles and
valuable documents.

This P. E. O. birthday gift will be
appreciated by future members to
whom this bequest shall fall.

Some day P. E. O. children now
in nursery school or kindergarten
will be seeking the history of the
beginning of the museum project
recorded in this issue of the RECORD.

► THIS IS THE MONTH IN
which Father finally has his day.
Mother may have had an orchid in
May; Father perhaps will rate a
necktie in June.

Back in 1910 someone in Spokane,
Wash., and across the continent in
Wilkesburg, Penn., someone else
thought he should have his day and
Father's day was observed in those
two cities. Finally in 1923 the idea
prevailed all over the country and
the third Sunday in June was set as
Father's particular day. One light-
minded column newspaper writer, a
man it was, said this:

"Various flowers have been used
as appropriate Father's day blooms.
For a while the dandelion was a
favorite, because, like father, it bobs
up again no matter how hard it is
stepped on."

► ALL OF THE BOYS AND
men in the armed forces and
women also get homesick. If they
did not it would imply that the homes
they had left were not much in the
way of a home.

It was, I think, in one of Ruth
McHenry Stewart's books that a

Negro Mammy said to a girl who
was trying to keep from crying:

"Just bust out, Honey, it will do
you good." And so in far away
places I hope these homesick cry
sometimes.

Dr. Cutter writing in his column
on homesickness said this:

"David, the Psalmist, tells of the
sorrows of the exiles in Babylon
when he relates that—'We wept
when we remembered Zion.' There
are unbreakable ties which bind us
to the scenes of childhood and a
world of loyalty is associated with
the word home."

► PERHAPS YOU WILL HAVE
noted that convention reports
like the conventions themselves have
been shortened this year due to the
fact that the RECORD is restricted in
all of its issues to 32 pages. If by
chance a reporter finds her report
has been shortened she will under-
stand why it is so.

Twice in previous issues of the
RECORD the announcement was made
that space and 32 conventions con-
spire to limiting the length of re-
ports.

Bulletin of Officers, an Extra

The directory of P. E. O. officers
of local chapters and other directory
features usually published in the
May issue of the RECORD is being
published this year as a separate
bulletin.

Copies will be sent to the follow-
ing: all local chapter presidents and
corresponding secretaries; to all offi-
cers of Supreme Chapter; all officers
of State, Province and District
Chapters; all members of boards of
trustees; all standing committee
chairmen of Supreme Chapter;
Executive Secretary, the President of
Cottey college, the editor of the
RECORD.

Any P. E. O. wishing a copy of
the bulletin may obtain it by writ-
ing to Mrs. Nell Stevenson, 2126
E. 38th St., Tulsa 15, Okla. and
enclosing ten cents in stamps and
giving her name, address and chap-
ter letter. The request should be
made immediately.

The number of copies of the di-
rectory is limited; when they are
gone no more will be published this
year. Remember they are to be
ordered from Mrs. Stevenson, chair-
man of the board of trustees of the
P. E. O. RECORD, whose address ap-
pears above.

Be sure to enclose ten cents in
stamps with your order.

A BIRTHDAY GIFT TO P.E.O.

A SIGNIFICANT FEATURE OF the 1944 Illinois convention was the presentation and acceptance of a gift from Chapter D, Chicago, of the nucleus of a museum collection of articles of the period of the founding of P. E. O., the period covering the early life of the Seven Founders of P. E. O., the period of approximately the 50's, 60's and 70's.

Miss Lila Woods Robinson, a long-time P. E. O., a former president of Chapter D, made the introductory speech concerning the plan of the chapter and introduced the originator of the museum plan, Louise Weaver Avery (Mrs. F. F.) an authority on early Americana, a member of Chapter D.

Miss Robinson said in part:

P. E. O.'s Diamond Jubilee centers attention on the pioneer days of the heart of America, where and when those seven lovely girls, our Founders, voiced the convictions and desires of their hearts and charted a pattern of friendship and service which we, more than seventy-seven thousand, are endeavoring to follow seventy-five years later.

The Black Hawk Purchase opened America west of the Mississippi to settlement. Of course Iowa, bordering on the Mississippi was the first land settled, by native Americans from New York, Pennsylvania, Ohio, Virginia, Tennessee, Kentucky, who had money in their pockets, education and an appreciation of the eternal values. In the long trek those good people crowded into their covered wagons bits of cherished finery — embroidery, fine linen, a marvelous coverlet, a silk shawl from China, sandwich glass, a luster pitcher, perhaps a ladder-back chair or a mahogany high-boy.

Native Iowa boys were among those engaged in the successful effort which saved the Union as a whole indivisible Nation. The frontier had pushed beyond the prairies, across the plains, over the mountains and on to the Pacific Ocean. In 1869 all of this territory was bound together by a steam railroad, the acclaimed Union Pacific — a miracle.

In that period was founded P. E. O.

Chapter D, chartered in 1899, wishes at this special birthday time to prove its admiration of the wisdom and inspiration, and the pioneer courage of our Founders in making this our gift. We ask your blessing on our endeavor.

Our Lulu Weaver Avery inspired us in the *direction* of our celebration of our Sisterhood's seventy-fifth birthday by offering us many of her valuable treasures that are related to the people and the places associated with our Founders. She is a well known collector, whose wide experience has made her an authority in such matters. With her help, Chapter D has assembled many worthy personal treasures, added them to a part of hers and displayed them at this 1944 Convention. We have spoken of it as Chapter D's Project but it is more intimate than a project. She will tell you of our collection and of our dreams.

To this introduction may I add that Mrs. Avery is the niece and namesake of that beloved of all the Sisterhood, Lulu Corkhill Williams, third initiate of P. E. O., who was president of Illinois State Chapter, 1907-1909, when she was a member of Chapter D. Sisters — Mrs. Avery.

Having been introduced by Miss Robinson, Mrs. Avery presented the gift collection. She said:

"Before speaking further of Chapter D's project, the speaker would like to refer to two quotations from the P. E. O. RECORD of January 1944.

On page three describing the Golden Jubilee convention held in Denver the writer says. "The goal of one hundred thousand dollars in the Educational Fund, that had been set two years earlier, was exceeded. All this in the midst of a World War — while P. E. O. moved steadily forward."

This year, 1944, we are celebrating P. E. O.'s seventy-fifth anniversary and we find ourselves in another World War. Still we are moving steadily forward.

The second quotation is "For thirteen years Chapter A was the governing body of P. E. O. Finally the good old American spirit of govern-

ment came to the fore in the home of Ella and Lillian Bartlett. Nellie Ambler Campbell preceptress, and professor of literature at Iowa Wesleyan University was its spokesman.

Chapter A conceded graciously and the famous first convention was held on November first and second in the year 1882 in the parlor of Lulu Corkhill's home, the Methodist parsonage in Bloomfield, Iowa. Ione Ambler, Chapter A's first initiate presiding."

★ ★ ★

The speaker begs forbearance when making personal references, but as a granddaughter of the clergyman of that parsonage certain heirlooms from his home and from the homes of his three daughters came into her possession, and these have been placed among other heirlooms belonging to members of Chapter D and are offered with your approval to P. E. O. for a modest start toward an Historic Museum when the time is right.

Chapter D believes that the P. E. O. Sisterhood, with its fine cooperative spirit, its training, and its capacity for work, could collect valuable treasures for such an institution from P. E. O. homes scattered over America.

Chapter D also believes that such a Museum should be erected in Mount Pleasant and dedicated to our Seven Founders, with an 'inner-sanctum,' as it were, reserved for them, and suggests that this be used as a department for shawls and costumes.

Members have expressed the opinion that the men of P. E. O. families could offer much valuable advice in collecting historical letters, papers etc.

It had seemed to the speaker that Senator Harlan's old home in Mount Pleasant, occupied when he was president of Iowa Wesleyan University, would be an appropriate shrine for P. E. O. heirlooms, but it has already been presented to that college by his daughter, the late Mrs. Robert Todd Lincoln. It is being used as a stu-

(Continued on page 24)

★ THE P. E. O. RECORD

ABSENTEES PAY THE PRICE

This has not happened before in our chapter. We have thirty-six members, and one-third of them are non-residents. They are scattered from Orono, Maine to San Antonio, Texas: from Barre, Vermont to Inglewood, California. One of them is a newspaper woman, one a traveler's aid, another an interviewer for the United States Employment Service. Married women are back in the classroom after years spent in their homes as housewives. These experiences are not unique. No doubt all chapters have members away from home in service for their country.

These members of ours do not get dimits and go into other chapters because their positions are too uncertain. They seldom know when they may be transferred to another state or may need to go with their husbands to another camp. They must be poised for flight. "Absentees pay a price," one member wrote, "whether it be their pangs of conscience or via some other medium." We know they are lonely, miss their own homes, and prefer being near their P. E. O. sisters.

What are we doing about our non-resident members? Of course we are sending them our year-books, a letter occasionally asking for dues. They receive the RECORD and are invited to visit other chapters, but they still feel lonely and miss their sisters.

To bind AJ absentees closer to our chapter we gave them a place on our program. We asked them in the fall to plan toward a meeting in March. At Christmas time when we sent them greetings, we reminded them of their program. The year-book committee wrote that one non-resident had published an article in an educational magazine which she planned to send us. A favorite poem, a brief interpretation of the latest book they had read, or a letter about themselves and what they were doing, would all be welcome. As the meeting day approached, mothers who had P. E. O. daughters away from our chapter became anxious. One wrote, "The deadline is Monday, March 27. I'll feel dreadful if you don't get your contribution here on time." Another said, "Send your scrap-book, or a message about yourself soon." Letters came by special delivery and by air mail. The program committee telephoned a few fathers, "Run in and read your daughter's letter, which she has sent for us tomorrow." These brothers-in-law seemed to share our enthusiasm.

By WINIFRED WINTER TALBOT (Report of a program by non-resident members, AJ, Minnesota)



ter's letter, which she has sent for us tomorrow." These brothers-in-law seemed to share our enthusiasm.

The big night arrived, and every member came, except two who were ill. The newspaper announced the program, "Letters From Non-Resident Members." Everyone came to the meeting, knowing it would be more than a report by the corresponding secretary.

Because Chapter AJ, Minnesota is proud of her absentees and because she believes that other chapters may profit by a similar program in 1944-45, we quote from a few of these contributions.

TEXAS (A play)

"The Red Cross Unit of the Post Meets"

Thelma: "Girls, Mrs. B. V., the Red Cross head, was here yesterday. She said too many bandages overlap in the middle and others do not meet but have air pockets. Do be careful, won't you? You know girls, I hate to be so fussy."

Nina: "Rain! Rain! Rain! Nothing but rain for days, even weeks. Never saw such weather in all my life."

H. S. G. (Home state girl): "It is unusually wet this winter."

All: "Unusual?"

Nina: "It is 'unusually hot' last summer, 'unusually cold' last fall, now it is 'unusually wet.' Pretty bad weather, if you ask me."

H. S. G.: "We have to stage unusual weather or all you army wives would plan to make your homes here."

Nina: "Never! Give me a good old-fashioned North Dakota blizzard. I like snow with my wet weather."

H. S. G.: "That would be awful. Imagine living in a cold state like your Dakota."

Flossie: "I'm from Minnesota. Snow would be beautiful to my eyes."

Grace: "We like the Texas people, but we can't get accustomed to four seasons in one day; a chilly

spring morning, collapse with heat at noon, fall weather at five, and a blue norther at mid-night!"

MAINE (A letter)

"It hardly seems possible that I have spent five months in New England. Much of the strangeness has worn off, so I find it difficult to recall my first impressions. The scenery and the homes are like the pictures I have seen and the stories I have read. A huge red barn standing off by itself in Minnesota will probably look strange to me when I return next summer. For houses and barns are attached here. Maine has only a few stone fences, but it has scores of pine and birch trees. Most of their houses are very old. We in the middle-west value our new modern homes. People back here are the prouder because their homes are old. We speak of sub-standard housing at home when houses are not lighted with electricity. One girl in my class said she wouldn't think of putting electricity in their family home. It was built by a famous sea captain ancestor and electricity would spoil it for all of their family."

CALIFORNIA (A letter)

"The city of Los Angeles is perhaps best known through the movie industry, centered in Hollywood. The city enriches its inhabitants in many other ways, not the least of which is oil production. There are many derricks and stacks throughout the city and my husband and I were not a bit surprised to find one nearly in our backyard. Except for an unusual oleaginous odor at certain times of the day, one would scarcely be aware of its presence. When we look eastward we see the lovely snow-capped mountains softly framing this sprawling city and the lights sparkling out from the hills in the evening. It is easy to appreciate the feeling of the natives for their city."

VERMONT (A letter)

"I've seen Vermont in three seasons now, and it would be hard to say which is most beautiful. The hills are soft and lovely when they are green, breath-taking in the glory of autumn, and like pictures on Christmas cards in winter. Just now all the talk is of sugaring. I think it is interesting that the higher the maple tree, the better the syrup I

may become an antique collector on a small scale. Several women I know, belong to a class and paint or re-finish antiques. I go on jaunts with them and would like to own some of the old copper kettles, Boston and Salem rockers, the bells, and the milk and cranberry glass we have seen. I have also taken up hooking rugs too in a class in Montpelier with a Mrs. Stratton as instructor. We use only all wool materials cut in short strips an eighth of an inch wide and work with a crochet hook. The rugs which come out of Mrs. Stratton's studio are heirloom pieces. Some women work as long as three years on one rug."

CONNECTICUT (An article)

"A War Wife at High School"

from New Haven Teachers Journal

"I am proud of the spirit of the busy teachers. Does the public appreciate what the additional war responsibilities piled on top of class assignments, hall duties, and the many extra-curricular activities really mean? Splendid Americans, these teachers, doing their very best to help in so many ways during these difficult times. Within the circle of their influence are being developed the future defenders of our democracy."

IOWA (Letter by newspaper reporter)

"Last October, when Schick General Hospital was dedicated, I met Major General Norman T. Kirk, surgeon general of the United States Army, who gave the dedication address; Major General Uhl, commandant of the seventh service command; and two other major generals."

She mentioned that Boris Karloff, motion picture favorite boogie man, Albert Spaulding, famous concert violinist, and Gene Kelly, musical comedy and movie star, had given programs to the boys in the wards, and added, "The men are almost pathetically grateful and pleased that important artists like these men will take time to stop here and play for and entertain them. . . . These boys from overseas service do not like our labor strikes and bickerings in Congress. They don't like to find their girls and younger sisters roaming the streets and becoming delinquency problems. They think they gave up a great deal to go overseas and fight the war and they wish the people left behind at home would be willing to accept a few sacrifices."

MINNESOTA (a) (Letter by United States Employment Interviewer Under the War Man-Power Commission)

"Our office is a very busy place — some days we have 3,300 people going through, looking for jobs or filing for unemployment compensation. There is no labor shortage here. . . . In our Veterans' Unit, many boys from World War II are coming in, some badly handicapped. They speak of being in Italy or Africa so casually, and they seem so awfully young. A real effort is being made to get them back into civilian life with the least possible upset to them."

(b) (Letter by Volunteer Traveler's Aid)

"The requests for help are varied, none of which are ever treated lightly. The following examples will give a meagre idea of the nature of the work.

"1. Helping out-of-town girls, who have come down for defense work, to find rooms, and attempting to get hotel rooms for business people. They are all amazed at the housing difficulties of our city.

"2. Sending a note to a young soldier to tell him that his wallet and his ticket to San Diego had been found.

"3. Offering suggestions to cadets from Australia and England, down from Canada, on 'What to see in Minneapolis.'

"Tell your children when in a strange city never to hesitate to stop at the Traveler's Aid desk somewhere."

One member sent a poem by Emily Dickenson and wrote "I think the non-resident program a lovely and generous idea. It helps us feel a part of you. We miss you all so much."

The chairman was a non-resident who came back for the meeting. She presented the program and included her contribution: paragraphs from letters from her husband, a seabee in the South Pacific. She has also a son in service and she is teaching music while keeping their home together.

These experiences of our absentee sisters show that they are paying a price for their American heritage. Their long hours of work in crowded centers and their strange new homes away from loved ones, make us realize their sacrifices. In return, we can keep the star of P. E. O. shining bright. We can hold fast to the high ideals of P. E. O. and bind our absent members closer to us by hearing their experiences and remembering the price they are paying.



"We have loved the stars too fondly to be fearful of the night."

BIRTHDAY GIFT

(Continued from page 22)

dents' club-house, and of course is not at present fire proof.

In Chapter D's exhibit, quaint tinctures, photographs, and magazine illustrations, show the costumes worn by women in the year 1869 and earlier. Those were the days of the hoop-skirt and the shawl. The former displayed to advantage the design of the latter. They went into an eclipse together.

The shawl belonging to her Mother in which Lulu Corkhill was initiated is shown in Chapter D's exhibit.

When we recall the American shrines that have been acquired, furnished, and governed by women, such as George Washington's home in Mount Vernon, where a P. E. O., the late Mrs. Horace Towner, once served as regent of its Board of Governors. Andrew Jackson's home, the "Hermitage" near Nashville, the ante-bellum homes at Natchez — homes acquired by the Colonial Dames — in the states of New York, Massachusetts, Pennsylvania, Maryland, and Louisiana, does it not seem possible to envisage a Pioneer Historic Museum in our great Middle West?

Many fine museums both here and abroad were once merely private collections. Sometimes the original collector was a king, sometimes an Inn keeper, who collected articles for the entertainment of guests.

American women have been and still are working to interest our public in the preservation of our heirlooms — appreciating, as only woman can, how many beautiful household possessions have been lost to the world through carelessness, neglect, and through destruction by war.

There is a real drama in the history of P. E. O. We have, through the years, very appropriately dwelt on what the Seven Founders did, but a complete drama must have also time and place.

So — with the time 1869 definitely established and the place where these girls passed their school days already acquired, P. E. O. could reproduce their life and times and stage a complete drama in an Historic Museum.

And now I have the honor to present to the Illinois State Chapter, in memory of Mary Allen, Alice Bird, Hattie Briggs, Virginia Coffin, Sula Pearson, Franc Roads, and Ella Stewart, Chapter D's gift to P. E. O. on its seventy-fifth birthday.

★ THE P. E. O. RECORD

LOCAL CHAPTER NEWS

ALABAMA

MRS. KNAPP IN ALABAMA

Chapter B, Birmingham has since its organization two years ago looked forward with eager anticipation to the time when the Supreme Chapter Organizer would visit us with perhaps some word of encouragement for our efforts in behalf of P. E. O. in Birmingham and Alabama. Our hopes have been realized. We have just had the privilege and pleasure of having Mrs. Laura Storms Knapp with us and her charming personality won for her the love and admiration of every member of our chapter. The inspiration gained from her visit with us will help us to go forward with new zeal and enthusiasm for P. E. O.

A luncheon was given in honor of Mrs. Knapp at the home of Elizabeth Michaels, April the third, with sixteen members of the local chapter present. Mrs. Orvyl A. Smith of Chapter DD, Aurora, Ill. was a guest.

After the luncheon a business meeting was held, our President, Fannie Bell Long, presiding.—Stella D. Barr.

CALIFORNIA

MISS ONE MEETING IN FOURTEEN YEARS

Chapter GS, San Francisco, honored Mrs. Imo Persons on April 5 at a special luncheon preceding the regular meeting. She was presented with a number of gifts, and while it was a merry party there was sadness too for she is leaving soon to establish a new home in South Pasadena, California.

Mrs. Persons is a charter member of Chapter GS and has been one of our most loyal and devoted members. During the years she has been the chapter musician and in addition has filled many offices ably and well. We are very proud of her remarkable attendance record for in the past fourteen years she has only missed one meeting.

We wish for her success and happiness in her new home.—Lourene R. Harvey (Mrs. J. L.).

COLORADO

CHAPTER AG's WAR WORK

Chapter AG, Denver, has had for its main work making dressings for the National Cancer Control. This is a summary of the work in recent months: 1674 dressings; 12 pairs knitted socks; 2 knitted sweaters; 1 wool afghan; 4 wool scarfs. Collected 26 pounds of cancelled stamps for the Swedish Sanitarium which helps them financially.

To the USO were given 30 decks of playing cards; 128 dozen hose for stretcher pads; 34 bundles of Christmas gifts.

Many magazines were also sent to USO.

To the orphans home were sent 3525 Christmas cards for their scrap books.

Many Christmas gifts were sent to Land's Home for tubercular young women.

To the Needle work guild \$5.50 was contributed.

All of this was done as a chapter and in addition to the individual contributions made by members to various war agencies.—Mabel K. Van Stone.

IDAHO

A NEWS NOTE FROM BOISE

Chapter H, Boise, held an especially interesting initiation April 4, when Mrs. Armarel Boeck, outgoing president, presided at initiation ceremony for her second daughter, Mardi, who was recently graduated from Mills College, Oakland, Calif.

Mrs. Boeck now has two daughters who are members of P. E. O.—Marian Harbing.

FORTIETH ANNIVERSARY

Chapter A, Boise, celebrated its fortieth anniversary at the home of Arlie Afton, April 18.

Old fashioned costumes were worn and the initiation ceremony of forty years ago was the feature of the evening with Muriel Whitehead as chairman.

Those taking part were, Muriel Whitehead, Dina Ketchens, Blanche Bodgley, Mary Roberts, Ava Brinck, Mildred Newhouse and Mary Rober.

Letters were read from past presidents of long ago, Mary Brown, Jessie Skinner, Blanche Chalfant and Maude Brinck.

We are, every one, proud to be a member of Chapter A.—Mary Raber.

ILLINOIS

A CHAPTER IN MT. CARROLL

Chapter GA, Mt. Carroll was organized April 5, 1944 by Mrs. Louise Waddell, organizer of Illinois State Chapter. The meeting for organization was held in the Glen View hotel. Mrs. Waddell was assisted in the organization by members of Chapter CE, Savanna, which had sponsored the new chapter. Mrs. Mary C. Beatty, president of Illinois State Chapter was an honor guest for the day.

Fourteen members were initiated by Mrs. Waddell, with Mrs. Mabelle Grieson and Mrs. Alvina Miles of Chapter CE assisting. The new members are Ida Thayer, Zella C. Carbett, Mary Nutt, Anna Towert, Thelma Fox Hommedeu, Ruth Noble, Violet Frank, Florence M. Eaton, Sadie Hedler Schmidt, Dorothy Ashley, Lovejoy, Annabel Kneale, Virginia Weigel, Edna Thoreen, Marguerite H. Bro.

EIGHTEEN SECOND GENERATION MEMBERS

Chapter EY, Illinois on March 3 initiated three new members, Mrs. Georgia Tomlinson, and Misses Merle Miller and Bettye Frye. Mrs. Tomlinson is the daughter-in-law of our president, Mrs. Alma Tomlinson and Miss Frye the daughter of our recording secretary, Mrs. Emma Frye. Miss Miller is a teacher in our high school.

The meeting was held at the home of

Mrs. Anna Dorris, a past president. After the initiation a delicious buffet supper was served.

We have initiated eighteen daughters and two daughters-in-law into our chapter since it was organized. Three of the daughters charter members.

We are grieved to report the death of one of our charter members, Mrs. C. Helen N. Holly, April 5, 1944.—Vera D. Hansel (Mrs. Noel).

A CHILDHOOD AMBITION

Chapter AQ, Augusta on Dec. 29, initiated three P. E. O. daughters, thus satisfying their ambition since childhood.

Mrs. Nina Jones, president of the chapter initiated Marilyn Robison, a sophomore at Lindenwood college; Mary Weinberg, a senior at Western State Teachers College and the presidents' own daughter Alice Jones a junior at the State Teachers College.

The girls had all been friends since childhood, this experience cementing that friendship.—Mary G. Robison.

IOWA

CHAPTER F ORGANIZED 60 YEARS

A group of seven girls, representatives of this community, met at the home of Ollie Gates, and with the assistance of two girls from the Bloomfield Chapter, organized a P. E. O. Chapter in Moulton, April 12, 1884. At that time we were known by the letter M. The charter members were:—

Ollie Gates-Pulliam, Orian Pendleton, Hattie Marshall, Lillian Moore-Berry, Julia Stuckey, Bell Murdy-Smith, Minnie Callen-Beck.

Two of the charter members are still living; Mrs. Bell Smith of New Hall, Calif. and Mrs. Minnie Beck who belongs to a chapter in Des Moines. Others were initiated in later years. As time went on many changes were made. A State Chapter was organized in 1893 and at that time our letter was changed to F.

99 who were taken in this chapter have affiliated with other chapters by dimity;

42 have joined the Chapter Eternal;

14 are inactive and widely scattered over the States.

As we reach our sixtieth anniversary tonight, we record 199 initiated, with a total enrollment of 211, including Mrs. Eloise Thompson, our new initiate.

Eight on the chapter's enrollment are in the 30 year or more, Class. Actives, Mrs. Lou E. Barkley, Mrs. Etta Berry Halden, Miss Frankie Singley, Mrs. Martha Downing, Mrs. Eva Singley. Inactives, Mrs. Bell Murdy Smith, New Hall, Calif.; Mrs. Amanda Harbert Smith, New Field, N. J. and Mrs. Lydia Blosser Staver, Lima, Ohio.

May those of our younger members, who will carry on the work of our chapter, experience the happy, congenial and sisterly love, in the next 60 years, that we pioneers have experienced in the past 50 or more, years.—Eva B. Singley.

A NEW WATERLOO CHAPTER

Chapter IX, Waterloo was organized April 18, 1944 by the state organizer Mrs. Beatrice Lee Thomas. The meeting was held in the Yellow room, of Black's tea room.

The chapter was sponsored by the three chapters of Waterloo, Z, FE and IU.

The charter list is composed of 27 dimitted members: Dorothy O'Connor, Grace

Boysen, Elanor Miller, Gladys Lasser, Charlotte Hinson, May Logan, Geneice Hoffman, Velma Butler, Alice Butler, Maxine Batcher, Berneice McKinstry, Fay Shirey, Ella Beem, Marian Lomison, Mary Waterbury, Jessie Waterbury, Marian Gunderson, Martha Bryant, Jean Hoxie, Flora Lacey, Adaline Oren, Gertrude Smith, Mable Spaford, Dorothy Asher, Ruth McClaran, Alice Hacker.

At the first meeting of the chapter Lois Berry was accepted by dimit.

The following officers were elected: President, May Logan; Vice President, Martha Bryant; Recording Secretary, Maxine Batcher; Corresponding Secretary, Flora Lacey; Treasurer, Elanor Miller; Guard, Ruth McClaran.

A luncheon preceded the Organization Meeting at which Mrs. Elizabeth Young, state president and officers of Z, FE and IU were guests.

INDIANA

MRS. EDWIN F. LEE GUEST SPEAKER

Chapter AA, Evansville was honored to have as guest speaker for its February 24 meeting Mrs. Edwin F. Lee, wife of Bishop Lee of Chicago, returned missionary bishop of the Board of Foreign Missions of the Methodist Church, to the Maylay Islands. Mrs. Lee was the featured speaker at the local World Day of Prayer observance the following day, and she arranged her visit to Evansville to include the P. E. O. meeting at the request of one of AA's members, Mrs. LaVyrne Brown, president of the Evansville Council of Church Women. Luncheon was served at the Vendome Hotel Amber Room followed by the regular business meeting, and the gracious speaker presented the afternoon's program.

Besides being busy individually with war work in the form of Red Cross, Canteen, Nurses Aid and USO volunteer work, Chapter AA has folded bandages for the local Marine hospital, and made Red Cross layette items at the regular meetings. A project of special interest was the making of 25 muslin covers for new mattresses purchased for the Girl Scout camp.—(Mrs.) Jean T. Millikin.

TWINKLE, TWINKLE LITTLE STARS

Chapter BF, Elkhart, entertained guests and one of her non-resident members, Dorothea McClung (Mrs. Farris) of Hugoton, with a colorful program April 18 at the home of her president, Rachel Lawless (Mrs. Norman).

The program, entitled "Twinkle, Twinkle Little Stars," included all children, from two to eighteen years of age, of Chapter BF resident members. The smaller children were characters in a little operetta, "The Birds Return." The smallest child, Mickey Bloodhart, played the part of a little bunny, Monzelle Gray, the fairy, Suella Sutton, Sharol Ann Rowland, and Mabel Jean Rives were dressed as the Daisy, the Rose, and the Iris. Barbara Perkins, Charlene Dean, Barbara Leaton, and Jocelyn Mayberry were dressed as the Robin, the Bluebird, the Red Bird, and the Oriole. Dorothy Dean and Marilyn Mayberry characterized the two naughty little boys that wish to harm the birds.

Margaret Rives concluded the program with a reading, "The Flappers Recital." Don Lawless and Billy Rives acted as stage managers. The program was under the direction of Mildred Bloodhart (Mrs.

WINDOW IN THE WEST

The night sky spreads

Its pattern o'er the west. A fret of treetops
Traces vaguely dim, the rim line of the hills
And melts aerial archetypes and sighing
pines

In blending blue. Its part each track-
less star fulfills,

Each constellation swinging on its course
Is luminous and bright.

The night wanes chill

With icy rime, and through the pane
agleaming

Far up across the velvet lapis sky,
Orion, belted huntsman, still pursuing
The Sisters Seven. His dog-star standing
by

To listen for the whir of one lone winging
Lost Pleiad in her flight.

No dimmed out stars

No chilly quarter-moon, nor smould'ring
fires

Alone can halt the chase. The silent sky
Belies an earth, hot with hurry, flights burst-
ing

With explosives, and far-flung convoys vie
With under-sea craft might.

O, let no paling dawn betray the faith
That waits for peace, tonight.

—Pearl Woodworth Carlton

B. O.) and Evelyn Heintz Gray (Mrs. Evelyn) members of Chapter BF.—Ruth Rowland (Mrs. John).

SONS AND A DAUGHTER IN SERVICE

Chapter DT, Lincoln, a small chapter in a small town, but is second to none in its pride that there are five sons of members in service for our country. To that is added the love held for one of the chapter members Margaret I. Vance who has been over seas for more than a year, attached to the 74 Station Hospital Unit. She was first in North Africa, but following the invasion the unit went into Italy.

Margaret, a daughter of the Manse, is well suited to the recreational work in which she is engaged. She received her college training at Grinnell college, Grinnell, Iowa followed by graduate work at Northwestern University.

One summer was spent with the Priscilla Beach Theater at Plymouth, Mass., all of which has contributed in preparation for the work done by her and other Red Cross girls in bringing recreation to the service men at the front.

A NEW CHAPTER IN KANSAS

Chapter EZ, Coffeyville, was organized April 4, at the home of Mrs. Jackie Kistler, by Mrs. Stella Clapp, Organizer of Kansas State Chapter. Fifteen prospective charter members, thirty members of Chapter DR, and four other P. E. O.'s were present.

Mrs. Clapp appointed the following officers from Chapter DR to assist her with the business of organization and initiation: vice pres., Mrs. Vera Winston; Rec. Sec'y., Mrs. Helen Callaway; Cor. Sec'y., Mrs. Alice Wilson; Treas., Mrs. Mattie McMillion; Chaplain, Mrs. Bea Scott; Guard, Mrs. Frances Kaiser; Asst. Guard, Mrs. Jackie Kistler and pianist, Mrs. Winifred Benefiel.

A history of the organization of Chapter EZ, sponsored by Chapter DR, was given by Mrs. Mabel McBride.

The charter members are Kathryn Becker (Mrs. R. L.), Gladys Buckner (Mrs. R. F.), Marie Diggs (Mrs. C. A.), Edith Gregory (Mrs. O. J.), Jimmie Halpin (Mrs. V. C.), Iris Lips (Mrs. J. H.), Beulah Klotz (Mrs. V. A.), Lila Morrison (Mrs. J. D.), Bonnie Estes (Miss), Florence Hoover (Miss), and these dimitted P. E. O.'s: Mamie Ward (Mrs. J. S.), BK, Kansas; Anna Stoffer (Mrs. F. N.), CY, Oklahoma; Wilda DeArmond (Mrs.), BO, Oklahoma; Gevene McCreight (Mrs. R. B.), CJ, Kansas; and Sadie Allison (Miss), DD, Kansas.

After greetings were extended to the new P. E. O.'s, election of officers was held. Officers elected were Mrs. Anna Stoffer, president; Miss Florence Hoover, vice president; Mrs. Edith Gregory, recording secretary; Miss Bonnie Estes, corresponding secretary; Mrs. Wilda DeArmond, treasurer; Mrs. Beulah Klotz, chaplain; Mrs. Mamie Ward, guard.

The newly elected officers were installed by Mrs. Jackie Kistler, past president of Chapter DR, under whose administration the preliminary organization work was done.

At the conclusion of the business organization, members of the new chapter, and Miss Edna Meyer, DT, Kansas; Mrs. Louise Neptune, FC, Missouri; Mrs. Virginia Durland, AR, Texas, and Mrs. Nan Warren, J, Texas were dinner guests of Chapter DR at Kistler's Town Hall.

Following the dinner, Chapter EZ held its first regular meeting in the home of Mrs. Mamie Ward.—Helen Callaway.

A WAR TRAGEDY

Members of Chapter CD, Pleasanton, wish to extend their sympathy to Mr. and Mrs. Jess Trigg, Mary Frances Trigg, and Lt. Dorothy E. Trigg in the death of their son and brother, Lt. Charles Trigg.

Lt. Charles Trigg was stationed at the Galveston air base previous to being sent abroad. His plane crashed, March 19, 1944, while he was on an instrument checking flight over the Gulf of Mexico.—Ermalea Dunlap.

NEWS FROM SENECA

Chapter EH, Seneca, had the pleasure of initiating a P. E. O. daughter, Miss Dorothy Ruth Price, a student at Emporia State College, daughter of Ruth Price (Mrs. L. P.), at a special meeting Dec. 29, '43.

A covered dish supper at 6:30 preceded the initiation at the home of Jane B. Emery (Mrs. R. M.).

On Jan. 26, 1944 Chapter EH, initiated Milba Slomm (Mrs. L. S.), a daughter-in-law of our first president, Elsie Slomm (Mrs. L. S.), at the home of our pres., Lulu J. Richard (Mrs. C. A.).

On March 7, 1944 a daughter, Sharon Leon, was born to Melba Slomm, whose husband is in the service. This is the first grand child for the Slomm's, who have three boys, all in the service.

We have had two dinner parties for our B. I. L.'s this year. We have seven men of P. E. O. families in the armed forces.

Our chapter is not large but we are all giving time to various types of war work.—Irma Murphy (Mrs. G. F.).

TWO FIFTY YEAR MEMBERS

Chapter CS, Topeka, April 21, honored two of its members at a luncheon at the home of our president Mrs. Grace Wolf.

The two who have been members of P. E. O. for fifty years are Mrs. Sara Koontz and Mrs. Nettie Kinkle, the latter was absent from the meeting, visiting in Texas.

Mrs. Koontz and her daughter were given orchid corsages.

The program included a program of music of fifty years ago.—Viola M. Duff.



LOUISIANA

NEW ORLEANS NEWS NOTES

Chapter H, New Orleans, had the pleasure of initiating two daughters on March twenty-first, Patricia Ann de Lancey, daughter of Ruth de Lancey (Mrs. Livingstone), charter member of Chapter H; and Helen Jane Van Nostrand (Mrs. W. S.), daughter of Helen Jane Snell (Mrs. C. B.). Marie Garrigan (Mrs. George A.) of Chapter Y, Wisconsin, who is living temporarily in New Orleans, opened her home to Chapter H for the occasion.

On Founders' Day, Chapter H joined Chapter G for a luncheon at an uptown tea room. Mrs. Laura Storms Knapp, Supreme Chapter Organizer, was the guest of honor and speaker of the afternoon. She brought an inspiring address to the chapters. Ruth Grievish Jones (Mrs. C. E.), past president of Chapter G, introduced Mrs. Knapp. Louise Dike (Mrs. Kenneth E.), president of Chapter H, and Esther Springer (Mrs. W. G.), vice-president of Chapter G, presided at the luncheon.

The luncheon place cards were place-cards decorated with pen sketches of the French Quarter. More than sixty P. E. O.'s attended, including several from Chapter E, Baton Rouge, and unaffiliated members in the city who are temporarily located here. Helena Bond (Mrs. W. E.), Effie Nall (Mrs. Robert L.) and Sidney Keyes (Mrs. R. L.) of Chapter H, and Esther Springer of Chapter G composed the committee on arrangements.

After the regular meeting at the home of Effie Nall on March 10th Chapter H held a white elephant and out-grown clothes sale. Everyone joined enthusiastically in the fun, provided by the auctioneer, Bea Ruckman (Mrs. J. Ward), and the gratifying sum of twenty dollars was added to the chapter war bond fund as a result.—Ruth de Lancey.



MINNESOTA

A SECOND CHAPTER IN SOUTH ST. PAUL

Chapter CC, South St. Paul was organized April 15 at the home of Miss Mabel Mikkelsen, by the Minnesota state organizer, Mrs. Hazel Caldwell.

Officers of Chapter H, South St. Paul assisted in the organization.

The charter list added fourteen new members to the Sisterhood.

Officers pro tem for the occasion were Mrs. Halle Dickinson, recording secretary, Miss Ellen Hall, guard and Mrs. Irene Burington, Reporter for the RECORD.

In the business meeting held by the new chapter, the following officers were elected: Mrs. Loretta Andrus, president; Miss Mabel Mikkelsen, vice president; Miss Doris Mae Gebhart, recording secretary; Mrs. Margaret Vogel, corresponding secretary; Mrs. Selma Swanson, chaplain;

Mrs. Adell McCarthy, treasurer; Miss Katherine Hesnault, guard.

The charter list for Chapter CC was prepared by Mrs. Loretta Andrus, a former member of Chapter H, South St. Paul.

After the completion of the organization a supper was served to members and guests.

Guests present were members of the Minnesota State Board, Mrs. Helen Baird Vance, president; Miss Ellen Hall, 2nd vice president; Mrs. Hale Dickinson, recording secretary; Mrs. Irene Burington, treasurer. Mrs. Gertrude Schaller, junior past state president; Mrs. Emily Baldwin, past state president; and Mrs. Isabel Menz, a member of Chapter BL, St. Paul were also present.—Irene Burington.



FOUR GAINED, ONE LOST

Chapter AO, Alexandria, had the pleasure of initiating two new members during the year, Jessie M. Jacobs, sister of one of our charter members, and Lt. Kathleen Kiger, a P. E. O. daughter. We are happy to have received two members by dimit, Gertrude Bonde of Chapter CS, Lincoln, Nebraska, and Hedvig Iverson of Chapter AT, Bemidji, Minnesota.

One of our most talented members, Naomi L. Maede, Minnesota's State Corresponding Secretary, has recently moved to Watertown, South Dakota. Her loss will be felt by the chapter.



MISSOURI

TWENTY FIFTH ANNIVERSARY

Chapter DC, Springfield, April 8, celebrated its 25 anniversary at a tea. Five charter members were present, Miss Mary Davis, Miss Ida Ausherman, Mrs. Rose Briggs, Mrs. Blanche Temple and Mrs. Era Holt.

The program was a one act play written by Mrs. Helen Parker which dramatized the first meeting of Chapter DC, with the charter members as actors. Special guests at the tea were: Mrs. Hazel Windle, Missouri State President, and Mrs. Sadie Coltrane, a member of Chapter BG, Springfield, at whose home Chapter DC was organized.

Miss Davis, the chapter's first president and Mrs. Bernice Whisennand the present president presided at the tea table.

Mrs. Justine Phillips, who is the executive head of the Red Cross in Springfield, is a member of Chapter DC. She is doing a very fine work and is much admired. She has lived in Springfield only three years but has many firm friends.

Mrs. Vallie Mangun was the Red Cross chairman who put the city's canteen in running order and was in charge through its first year. The canteen erected by the War Dad's organization is open twenty-four hours a day and is manned by Red Cross volunteer workers.—Mary Rose Severney.



FIFTIETH ANNIVERSARY

The evening of March twenty-fourth was indeed aglow with golden memories for Chapter G, Queen City when the chapter celebrated its golden anniversary at the home of Mrs. Myna Lauer.

A delicious dinner was served at seven o'clock from a table beautifully decorated with a birthday cake holding fifty yellow candles. The favors were small white books tied with yellow ribbon, with the star and date of organization and Fiftieth Birthday Dinner on the cover and the

menu and program for the occasion on the inside.

The anniversary program following the dinner included a history of the chapter by Olive Jones who has been a member of the chapter for fifty years. Letters were read from twenty former members. A telegram came from Eva Perin Dysart, a charter member. Musical numbers were furnished by Marguerite Miller and Hilda McCusky.

Mrs. Olive Jones, who has been a member of Chapter G for fifty years, was presented with a guard for her P. E. O. pin and Mrs. Xenia Sloop who has been a member for twenty-five years was presented with a corsage of roses.

The evening, with its beautiful memories and happy associations will long be remembered by the members of Chapter G.—Elisabeth Sloop.



FOUR DAUGHTERS INITIATED

Chapter FC, of Kansas City had the honor to initiate four daughters, April 15 to exemplify the ritual.

Nelle Jean Querl was the first initiate. She is the daughter of a charter member, Mrs. J. L. Soyler, who is a Cottey graduate and also the first charter member to have her daughter initiated into our chapter. Nelle Jean is the fifth in line of relatives to be initiated into Chapter FC, her mother, Mrs. Soyler, an aunt, Mrs. W. H. Hailey, a cousin, Mrs. R. L. Hayes (Rachel Hailey) and an aunt, Mrs. W. A. Bewley; Mrs. W. R. Rice and Mrs. Archie Brand of Carthage, aunt of Nelle Jean, who are active in their P. E. O. chapter. Nelle Jean was married April 1 to Sgt. S. W. Querl of Webster Grove, Mo.

The second initiate was Nancy Nelle Shelton a student at Cottey this year. Her mother, Mrs. A. O. Shelton, a Cottey graduate, was among the first to be initiated into our chapter soon after its organization in 1928.

The third initiate was Patricia Kern, whose mother, Mrs. O. B. Kern a former member of CS, Laredo, Mo. was the first P. E. O. to be taken into our chapter by dimit, other than a Cottey student, Mrs. Kern has been a P. E. O. for 27 years. Patricia has an aunt, Mrs. Anna Marsh, a member of CK, St. Louis.

The fourth initiate was Helen Virginia Heinberg, whose mother, Mrs. H. E. Heinberg, was the first initiate into our chapter, other than a Cottey student. FC has initiated five daughters, and each mother has held offices in the chapter.

The setting for this lovely initiation was in the home of Mrs. Dora McClure, sister of Mrs. Stockard, Mrs. Elizabeth Campbell and Miss Virginia McClure, nieces of Mrs. Stockard, were assisting hostesses.—Nettie B. Miller.



OKLAHOMA

THIRTEENTH ANNIVERSARY LUNCHEON

Chapter CL, Seminole entertained guests March 24, at a luncheon in celebration of the anniversary of its organization.

Eloise Stroup (Mrs. A. Carey), our new president welcomed the guests. The out of town guests were Mrs. Zora Y. Knight, past president of Supreme Chapter; Mrs. Eva Hunter, past state president and Mrs. Lelia Leslie a former member of Chapter CL.

Another guest, Martha Johnson of AG, Skialook, entertained the company with

readings from her book of poems "Sauce for the Goose." The author's wit and charm added much to the readings, which were greatly enjoyed.

Mrs. J. L. Hull, a charter member, was a charming hostess, assisted by Mrs. H. B. Smith Jr., Mrs. M. W. James and Mrs. J. A. Hamilton.

Members of Chapter CL present were Mesdames Black, Billington, Campbell, Clark, Ellis, Foster, Gates, Hamilton, Harber, Hull, James, Mitchell, Smith, Stroup, Sutherland, Tate.—Ruth Hamilton.

OREGON

RUTH COMFORT MITCHELL, A GUEST

Chapter AE, Hood River, celebrated April 8 the twenty-first anniversary of its organization at a luncheon meeting. Mrs. Elsie Perkins and Mrs. Louise Kienholz were hostesses. A three tiered cake decorated with white and yellow was cut to serve twenty-three members. The ritual was exemplified by the officers recently elected for 1944-'45 and the afternoon was climaxed by a talk by Ruth Comfort Mitchell from P. E. O. chapter in Las Gatos, California. She was in Hood River to address another organization and Chapter AE was especially favored that it was possible for her to be a guest for the afternoon. Her gracious charm and her deep appreciation of P. E. O. made her immediately at home and a friend of every one present.

It was the last meeting for the present for Edna Plog who has joined the WAC's and will be stationed at Camp Haan, California as personal technician. Chapter AE is proud to have Clara Breckenridge, a non-resident member, as an air stewardess flying from San Francisco to Denver.—Elsie S. Perkins.

TEXAS

POST CONVENTION INSTALLATION

Chapter AV, Corpus Christi, is very happy that its president, Ruth Buttrey, was elected Corresponding Secretary of the Texas State Chapter at the annual convention held at Forth Worth.

Due to the fact that Ruth had to leave Forth Worth before the close of the convention, her installation was held in Corpus Christi on April 18. Mrs. Otis Watt of Austin, Junior Past President of the Texas State Chapter, came to Corpus Christi for the occasion and the meeting was held at the lovely home of Dorothy Young. Twelve members of Chapter AV and three non-resident members were present in addition to Mrs. Watt. Preceding the meeting, Ruth entertained the group at dinner at the House of Gifts.—Margaret Sutton.

WASHINGTON

WAR WORK OF MANY TYPES

Chapter AV, Chehalis has had a very busy year. It has been filled with various kinds of war work and activities connected with the welfare of the men in the service and of the community.

At almost every meeting there has been Red Cross sewing under the supervision of some member appointed for the purpose. Many a buttonhole has been made and many a button sewed on during the course of the year to the accompaniment of music, or while listening to a book review, a story about famous ??? and even while learning how to raise bees.

In addition, the chapter has supplied articles needed by the Red Cross for filling

Christmas kits for service men, and has donated several dozen diapers for layettes. Seventeen knitted afghans have been made by the members under the direction of Mrs. Jean Thompson and given to the Red Cross for hospital use.

Many are expert knitters and are busy most of their time turning out gloves and sweaters to help in filling local knitting quotas. Chapter funds have been invested generously in war bonds, and the chapter has been well represented in War Loan Drives, as USO hostesses and as instructors of classes in surgical dressings and other branches of home defense.

One husband and nine sons are now serving in the armed forces.

Under the careful supervision of Mrs. Mary Judd, the philanthropic committee framed sixty-two colorful pictures which were presented as a gift of the chapter to the MacMillan Tuberculosis Sanatorium, named in honor of Dr. A. E. MacMillan, a B. I. L., who has been head physician at the hospital for many years. A number of pictures also were sent to a school for mountain whites in West Virginia.

Of special interest, however, in connection with the war effort has been the service kit project.

About two years ago a committee of men selected by local service clubs and Veterans' organizations requested the help of a Woman's group to assist in producing a field service kit for presentation to men as they entered the armed services through county recruiting centers. The funds for the purchase of necessary materials were provided by public subscriptions, and necessary priorities were secured. The interesting task of making these kits was undertaken by the chapter, but a design had first to be found which would be adequate to the needs for which it was intended.

Being chosen by the chapter to work with the men's committee, Mrs. Annis Travis designed a model which was selected as the best from several submitted. The kit is constructed of army khaki and contains eleven convenient pockets for various uses, is attractive in appearance and folds into a neat and compact roll. Over a thousand have been made by the chapter, and since the demands have become very heavy some outside groups have been called upon to assist. These kits have attracted wide attention and the chapter has been highly commended for the part it has had in this very worth while work.

In spite of busy days and heavy duties, the social relaxations so much needed in times like these has not been neglected.

It has been the custom for many years to entertain the B. I. L.'s at dinner at least once during the year. This is an event looked forward to with pleasure by all concerned. One evening early in the spring was chosen as the date. The affair took place at the spacious home of Mr. and Mrs. A. E. Judd where games, cards, and happy conversation followed the simple war-time dinner.

The annual picnic for all the family is another occasion much enjoyed by both young and old. This year it was an event of mid-June at Alexander Park where swimming and other sports were indulged in to the delight of everyone. The 6:30 pot-luck dinner was no small part of the festivities.

At the anniversary meeting in January the Chapter Historical book, containing pictures, letters, clippings and souvenirs collected throughout the years, afforded much amusement and entertainment for those present.

Members of Chapter X of Centralia were guests of the Founders' day meeting on the afternoon of January twenty-sixth at the attractive home of Mrs. Katherine Bain. The beautiful candlelighting service was read by Mrs. Blanche A. Venard to the accompaniment of soft music played by Mrs. Peggy Lancaster.

Chapter AV has thirty-one active members some of whom are separated from us, in distance but not in spirit, as a result of conditions of war time. But we look forward with hope and confidence to the time when we shall all be together again.—Annis S. Travis.

FOUNDER'S DAY LUNCHEON

Chapter BY, Hoquiam, was happy to have been hostess to the other four Chapters, T, U, AK, and BC, all of Grays Harbor County, on the keeping of the seventy-fifth milestone in P. E. O. history.

On entering the hall, each guest was given a name card, made of stiff white paper cut in the shape of a diamond and the edges diamondized to give glitter and sparkle.

The table decorations were elaborately designed in the diamond motif. The center piece on the head table was a very large diamond about fifteen inches high, cleverly made of fitted pieces of mirror, the work of Mildred Adams.

In the program tribute was paid to the Founders and to twenty charter members who were presented with corsages.

The speaker of the day was Miss Harriet Warren, past president Washington State Chapter, who had for a subject "Brighter Grows the Star."

New members were introduced and Ruth Peavy, of Chapter T was also introduced as the wife of Capt Peavy, now somewhere in North Africa. Capt. Peavy had written his wife that the infrequent visits of the P. E. O. Clubmobile was their only contact with the outside. Dorothy Ladley, a member of the hostess chapter, was introduced as the sponsor of the local High School Scrap Book. Some 28,000 books, from High Schools over the entire United States were made to show the various war activities of the schools. Of that great number, 61 books were selected to be sent to Washington D. C., and then on their way to our Allies in Europe, as messengers of good will. Two books were selected from the State of Washington, and one of them was the book sponsored by Dorothy Ladley.

Ida Mae Graham, of Chapter BC gave a paper on "Helping Bring Back the Lights of the World." Chapter AK presented the Memorial Hour in the costumes of 75 years ago.

WYOMING

A NEW WYOMING CHAPTER

Chapter Y, Casper, was organized April 12 by Mrs. Marjorie Jensen, state organizer. The meeting was held at the home of Kathrine Hutton.

Mrs. George Daniels, state treasurer, led devotions.

Ella Nash Loy, past state president spoke on P. E. O. Projects. Another past state president Rhoda Wall discussed "The P. E. O. Constitution as viewed by a new Chapter."

Mary McGee, president of Chapter G, Casper spoke concerning the P. E. O. RECORD. Esther Irwin spoke of the preliminary history of the chapter.

Following the organization, the new chapter held a business meeting. Two of

the members on the charter list of thirteen came by dimit from chapters outside the state, Eva Louise Everett from AL, Texas and Winifred Nevill from AA, Colo.

The officers elected were: president, Edna May Pierce (Mrs. C. B.); vice pres., Pauline Barnard (Mrs. W. B.); rec. sec., Esther Irwin (Mrs. Dick); cor. sec., Lorena Healy (Mrs. H. H.); treas., Winifred Neville (Mrs. P. R.); chaplain, Marjorie Armstrong (Mrs. R. L.); guard, Kathrine Hulton (Mrs. F. L.).

Other members of the chapter are Clara S. Larson (Mrs. R. M.), Lela V. Hahn (Mrs. F. N.), Christine K. Knoch (Mrs. F. E.), Ella Nash Loy (Mrs. S. K.), Esther J. Duncan (Mrs. H. J.), Eva Louise Everett (Mrs. W. H.).

The evening closed with a dinner at the Gladstone hotel.—Lorena Healy.



MICHIGAN STATE CONVENTION

(Continued from page 8)

depression of this topsy turvy world."

Election of officers resulted as follows:

President, Imogene L. Fisher; First Vice President, Nina K. Dahlstrom; Second Vice President, Nellie S. Burgess; Organizer, Helen M. Kopka; Recording Secretary, Ruth G. Draheim; Corresponding Secretary, Helen Palmer; Treasurer, Helen Lemmon.

Several minor changes were made in the State By-Laws and a Standing Committee was created to coordinate and disseminate information regarding Cottey College.

Reports of convention committees was a matter of routine but showed serious thought and efficiency. Grace Beall, official typist, was kept busy.

Caroline Stevens' final report of the credential committee, gave 121 delegates and 167 visitors registered.

Dorothy Livermore told briefly of the aim of the Post War Planning Committee and asked for suggestions and material which might be helpful in answering the question, "How can the P. E. O. Sisterhood contribute its share to the creation of a better world and a lasting peace?"

The program throughout the convention was interspersed with assembly singing directed by Mae Atkinson, Katherine Lemon or Georgia Wade and Louise Wann at the piano, and with special vocal numbers by Martha Beck Kildow, Gladys Martin, Elsie Moser, and Margaret MacArthur. Especially pleasing was a group of Victor Herbert songs arranged by the artists, Marian Sanborn, Martha Kildow and Lois Johnson, accompanist, at the Monday evening dinner hour.

Mrs. Raney and Mrs. Reeves, with their clever wit as well as words of wisdom, kept the convention atmos-

phere clear of the tension of long sessions. Tokens of Michigan's love for these two were presented following the presentation of a Past President's pin to Helen Kibby and her welcome to the "Rocking Chair" group.

The invitation to the 1945 convention by Chapters AK and AL was unique. Hand illustrated captions were thrown on a screen, luring one on in imagination to far away interesting places, then inviting all back to Detroit, with The Zoo, Greenfield Village and Belle Isle offered as a recompense for not being able to go on a real journey.

After the installation of officers by Mrs. Raney, Mrs. Fisher voiced her appreciation of the confidence placed in her by the convention and pledged her loyal best as President of Michigan State Chapter P. E. O.

The benediction was followed by singing, "God Be with you till We Meet Again."

Notes

So sorry. Reports as well as Conventions must be streamlined, so we were unable to list Chapter letters and names of many who so ably assisted in making this Silver Anniversary Convention the great success and inspiration all felt it to be. Sincere thanks go to the hostess Chapters for their untiring efforts and their loyal B. I. L.'s for baskets of lovely flowers which brought springtime to the Convention.

Hi ho, hi ho, to Convention we did go.—M. L. B.



Officers Of Local Chapters

BRITISH COLUMBIA

U, Vancouver:

Pres.—Miss Margaret Wilson, 3993 Dunbar St.

Cor. Sec.—Mrs. Merle Porter, 1485 W. 13 Ave.

Treas.—Mrs. Helen Fairbank, 6576 Lime St.



CALIFORNIA

S, Orange:

Pres.—Mrs. June W. Welch, 183 N. Grand Ave.

I, South Pasadena:

Pres.—Dorothy M. Oden (Mrs. Richard), 320 Fairview Ave.



COLORADO

AC, Canon City:

Cor. Sec.—Mrs. Gertrude S. King, 709 Pine Ave.

FLORIDA

V, Orlando:

Treas.—Dorothy Martin (Mrs. Flecher), 508 Hillcrest Ave.



IOWA

IX, Waterloo:

Pres.—May Logan (Mrs. J. M.), 303 Alta Vista.

Cor. Sec.—Flora Lacey (Mrs. R. W.), 215 W. Bertch.

Treas.—Eleanor Miller (Mrs. G. W.), 809 Prospect Blvd.



EV, New London:

Cor. Sec.—Ella Lynn Ogg.



IDAHO

M, Kellogg:

Treas.—Ann K. Moe, 117 W. Mullan.



MINNESOTA

CC, So. St. Paul:

Pres.—Loretta Andrus (Mrs. B.), 1115 Highland Ave.

Cor. Sec.—Margaret Vogel (Mrs. E. J.), 112 Sixth Ave. S.

Treas.—Adelle McCarty (Mrs. Ralph), 231 Sixth Ave. S.



OHIO

AD, Lakewood:

Cor. Sec.—Ruth D. Waltz (Mrs. E. S.), 2197 Atkins Ave.

Treas.—Marian Hume (Mrs. H. C.), 2689 Wagner Rd., Rocky River.



TEXAS

AI, Amarillo

Treas.—Miss Bette Scott, 411 E. 7th.



WYOMING

Y, Casper:

Pres.—Mrs. Edna H. Pierce, 1224 S. Woolcott.

Cor. Sec.—Mrs. Lorena Healy, 804 S. Grant.

Treas.—Mrs. Winifred Neville, 513 S. Park.



UNKNOWN

One never knows

How far a word of kindness goes
Down through the years,

A deed forgotten re-appears,
One kindly word

The souls of many may have stirred,
Man goes his way

And knows with every passing day,
Until life's end

That some one played the friend.

We cannot say

Whose lips were praising us today,

We cannot tell

Whose prayers ask God to guard us well;

But kindness lives

Beyond the memory of him who gives.

—Jennie Crawford, JJ, Calif.

P. E. O.'s in Uniform



Lt. Kathleen Kieger

WAC

Pvt. Jean Smith, H, East Orange, N. J. A221685, B's 325, WAC, Det., Buckley Field, Colo.

Lt. Margaret Rector Wharton, P, Santa Fe, New Mex. Army Air Field Harlingen, Texas. A licensed pilot.

MARINES

Lt. Kathleen Kieger, AD, Alexandria, Minn. Mess hall supervisor U. S. Marine Corps.

A. R. C.

Margaret I. Vance, DT, Lincoln, Kan., 74 Station Hospital Unit somewhere in Italy. Recreational worker.



Margaret I. Vance

Mrs. Melba Woolf Fairbanks, AM, Linnens, Mo. staff aid, American Red Cross Camp, Hulen, Texas.

Lieut. Leanne Phelps, AT, Spencer, Iowa, Station Hospital, Camp McCoy, Wis.

Lewis Gordon, BM, Lincoln, Ill., Red Cross recreational worker now in India, with 98 station hospital in charge military welfare service. Before enlistment, research Department of History, University of Illinois.

Marjorie Hendricks, F, Washington, D. C., director Red Cross service club in South Pacific area.

Ensign Betty D. Randolph, CW, Hartley, Iowa, Navy nurse, Navy Air Corps, Norman, Okla.

Miss Margaret Rice, B, Breckenridge, Minn., social welfare worker, staff hospital, Camp McCoy, Wis.

WAVES

Catherine Hammitt (T) 3 c/c Y, Cincinnati, Ohio, Wave Barracks, Whiting Field, Milton, Fla.

Bonnie Jean Brown, Yeoman 3rd class, USNR, Fleet P. O., Seattle, Wash. Member O, Pamona, Calif.

USO

Miss Marie A. Newell, USO director, AL, Edgemont, So. Dak.

WOUNDED IN BATTLE

The first member of P. E. O. to be reported as wounded in foreign service is Lt. Helen McCullough, F, Pratt, Kansas.

Lt. McCullough is an army nurse. In the battle on Anzio beach head in Italy, on March 29, when the Germans bombed the hospital in which she was serving, she was struck in the chest by shrapnel.

In a letter to her mother, Mrs. Inez McCullough (F, Kan.), she said that three operations had not been able to remove the bit of shrapnel. She is in a station hospital for a period of two months when she hopes to return to her work. She has been awarded the purple heart and been advanced to first lieutenant rank.

Courtesies to P. E. O. Relatives in Service

ANNOUNCEMENT

The RECORD is very pleased to carry courtesy notices from chapters concerning P. E. O. relatives in military service, as has been done in all issues of the magazine since December 1941.

Notices as brief as possible are requested.

Because the number of such notices has run into the hundreds and because new notices comes every month, the RECORD trustees have adopted the policy that governs other notices published in the RECORD that is one free insertion and charge made for repeated insertions as explained in "Important notice Information" at the head of the regular Notice column.

Chapter AN, Van Nuys, Calif. will be pleased to extend courtesies to P. E. O. relatives stationed in or near Van Nuys. Please send names and addresses to Mrs. H. C. McDaniel 14217 Gilmore St., Van Nuys, Calif.

Chapter EP, San Gabriel, Calif. will be very happy to extend courtesies to P. E. O. relatives in the Armed Forces, who are now in the vicinity of Pasadena and San Gabriel. Address Mrs. Charles G. Munger, c/o No. Willard, San Gabriel, Calif.

Chapter BB, Shawnee, Okla., wishes to extend courtesies to P. E. O. relatives in service in the Shawnee area. Address Mrs. L. L. Leslie, 733 North Beard, Shawnee, Okla.

Chapter AO, Glenwood Springs, Colo. wishes to extend courtesies to P. E. O. relatives stationed at Camp Hale and the U.S.N.C. Hospital in Glenwood Springs. Address Mrs. Frank Delaney, 901 Palmer Ave. Telephone 269.

Oklahoma City Council wishes to extend courtesies to P. E. O. relatives stationed in this area. Address Mrs. J. W. Crist, 2316 Barnes.

Reciprocity Bureau of Hawaii extends courtesies to P. E. O. relatives in service Island of Oahu. Address Mrs. Pierre Le Bourdais, 1995 Wilhelmina Rise, Honolulu. Telephone Miss Helen C. Cunningham 98063.

P. E. O. chapters of Pueblo, Colo. wish to extend courtesies to P. E. O. relatives in service at the Munitions Depot or the Air Base near Pueblo. Please send names to Mrs. Lewis A. Baker, 420 Tyler, Pueblo, Colo.

Please send names of P. E. O. relatives in service in Nebraska to Mrs. R. G. Simmons, 2927 Plymouth, Lincoln 2, Neb. State Chairman War Activities.

The P. E. O. chapters of Buffalo, N. Y. wish to extend courtesies to P. E. O. relatives stationed in the Buffalo area. Send names and addresses to Miss Laura King, 63 Claremont Ave., or Mrs. D. K. Segur, 18 Lexington Ave., Buffalo, N. Y.

Chicago Round Table wishes to extend courtesies to P. E. O. sons or relatives in service in the Chicago area. Address Mrs. J. M. McAllister, 8100 South Blackstone Ave., Chicago 19, Ill.

Chapter JC, Westwood Hills, Los Angeles 24, Calif., would be happy to know of P. E. O. relatives stationed in this vicinity. Please send names and addresses

to Mrs. D. A. Seibert, 1070 Glendon Ave., Los Angeles 24, Calif.

The Sioux Falls, S. D. Reciprocity board wishes to extend courtesies to P. E. O. relatives stationed at the Army Technical school in Sioux Falls. Send names and addresses to Miss Ella Roghl, 320 S. Prairie Ave.

Whittier Reciprocity wishes to extend courtesies to P. E. O. relatives in the Armed Forces stationed near Los Angeles. Please contact Mrs. O. A. Redman, 302 E. Beverly, Whittier, Calif. Ph. Whittier 413-591.

Camp Chaffee — Courtesies extended by Chapter F. Address Mrs. W. W. Vaught, Box 665, Fort Smith, Ark.

Please send names of relatives at Faragut N.T.S. to Mrs. Gale Chamberlin, 607 Foster, Coeur d'Alene, Idaho.

Chapters A and B will be pleased to extend courtesies to P. E. O. relatives in the service stationed in or around Louisville, Ky. Contact Mrs. Ruth H. Ewing, 2302 Woodford Place.

Wichita P. E. O. Council wishes to extend courtesies to all P. E. O. relatives in the Armed Forces stationed in nearby areas. Also to unaffiliated P. E. O.'s living or visiting in this vicinity. Address Mrs. H. H. Motter, 843 Wiley, Wichita 3, Kans., or phone 5-7258 or Mrs. A. E. Aufderhar, 1333 N. River Blvd. Phone 3-7775.

Chapter BM, Seattle, Washington, will extend courtesies to P. E. O. relatives in the U. S. Naval Hospital, Seattle. Address Mrs. Glenn M. Privat, 312 West Comstock St., Seattle 99, Washington.

Chapter F, Santa Fe, New Mexico, wishes to extend courtesies to P. E. O. relatives at Bruno General Hospital and to relatives in the Armed Forces in our vicinity. Address, Mrs. Reed Halloman, Santa Fe, New Mexico.

Minneapolis Reciprocity committee meets first Tuesday of each month October thru June at Donaldson's Tea Room 11:30 o'clock. Unaffiliated welcome. Phone Mrs. S. L. Carr, Walnut 5338.

Boston Reciprocity luncheon 11:30 fourth Thursday each month at Filene's luncheon room. All P. E. O.'s welcome.

GUARDS & SILVER-WARE —

A VARIETY OF ITEMS
FOR P. E. O. MEMBERS

CAROLINE J. TUCKER

2721 Humboldt Ave. S.—Minneapolis

MONEY FOR YOUR TREASURY

Our NO INVESTMENT PROJECTS offer quick profits for your organization. Sell quality VANILLA, SHAMPOO and other items. Write today for particulars.

SAMPLE FREE TO OFFICIAL
NORWALK COSMETIC CO., Norwalk, Ohio

APPLE BLOSSOMS

It has rained,
And the apple buds
Are lustrous pink pearls
In the dawn.
The swiftly clearing sky
Turns blue
As the clouds race eastward
To meet the sun.

Full moon,
And the apple blossoms
Are silvered
With the soft light.
The sky, still blue, but deeper,
Holds hard, glittering
Silvered blossoms.

P. E. O. Personals

Esther Dixon, FW, Lenox, Iowa, has recently become a member of the National League of American Pen Women. She has had published 36 feature stories, for the greater part in *Etude* and other musical publications. She is the author of published music, two compositions for piano "Uncle Ned's Waltz" and "The Pumpkin Eater". A song "The Purple Sage Calls Me" is now in the hands of its publishers. In addition she has, since 1937, conducted a column Music in The Lenox Time Table, a local paper.

Miss Edna Way, G, Athens, Ohio, on the art faculty of Ohio University in April won a prize of \$50 for her painting *Abstraction, the City*. The award came from the National Association of Women Artists, on pictures hung in the American Fine Arts galleries in New York City.

Aside from the award Miss Way received much favorable publicity by art critics.

Shakespeare's line "How far that little candle throws his beams" is once more demonstrated in a letter that came to Mrs. Alma Allen from the Belgian Congo, Africa where her Adopt-a-Mother plan is being tried and as everywhere, it works there.

Mrs. Allen is at present at Safety Harbor, Fla. recovering from an illness of many weeks duration.

Mrs. Charles T. Hickok, DK, Cedar Rapids, Iowa, wife of Dr. C. T. Hickok, Professor Emeritus of Social Science at Coe college, was recently elected as the first honorary member of the Cedar Rapids chapter, Delta Kappa Gamma. She was so honored because of her 37 years of active public and community service on educational and welfare boards. She is founder and chairman of Chapter DK's Abbie S. Abbott student loan fund. Mrs. Hickok was graduated from Green Springs academy, Green Springs, Ohio. She attended Lake Erie college at Painesville, Ohio, taught at Western Reserve academy, Hudson, Ohio, for four years.

Eleanor Small and her husband C. S. Small celebrated their golden wedding anniversary at a reception Feb. 14, 1944. Mrs. Small is a member of Chapter CT, Belle Fourche, So. Dak. Of particular interest to P. E. O.'s is that when Eleanor Small attended high school in Newton, Iowa, she was a pupil of Alice Coffin, one of the founders of our sisterhood.

Mrs. Fred Durand, AR, Junction City, Kan. is mother of Major Fenlon A. Durand who was awarded the Silver Star Medal on the citation having saved the life of his chief of the crew, "while under concentrated enemy and machine gun fire". The award was made personally by Admiral Chester W. Nimitz.

Mrs. Eulalie Ritner Chase, F, Portland, Ore. celebrated her 90th birthday anniversary April 8, at the home of her daughter Mrs. Miriam Larimer, a member of GR, Sioux City, Iowa. Mrs. Chase was initiated in E. Iowa City, Iowa. She was born in Mt. Pleasant, Iowa and with her friend, Lillian Bartlett (Curtis) attended Mt. Pleasant high school where Franc Roads and Alice Bird, P. E. O. Founders, were teachers. Mrs. Chase's other daughters Mrs. Nellie Price, O, Moorhead, Minn. and Mrs. Olive Koon, F, Portland, Ore. were in Sioux City at the birthday celebration.

Miss Jane Hall, HL, Dubuque, Iowa has received an award at Rockford College in recognition of a paper on Religion in Books VII to XII of Vergil's Aeneid. The award statement was that the paper "represented a thorough and thoughtful study of a difficult subject."

Mr. and Mrs. M. E. Neff celebrated their 59th wedding anniversary April 9, 1944. Mrs. Neff who has been a P. E. O. for 24 years is a charter member of Chapter ID, Modred, Iowa. The anniversary celebration was held in the old farm home near Bethany, Mo. where Mrs. Neff was born and the wedding of Mr. and Mrs. Neff was held.

Miss Gwendolyn Frostic, a Detroit P. E. O., a war worker at Willow Run, makes invisible parts for certain machines manufactured there. She is an artist and makes the sketches or blueprints on pictures or whatever the correct word may be. Hers is a very particular task.

She did most of the art work on menu folders, dinner cards, and other decorative features of the Supreme Chapter convention last autumn.

Frances Pino (Mrs. Joe) has been elected Worthy Grand Matron of the Grand Chapter O. E. S. of New Mexico and Sarah Lawrence (Mrs. Frank) was elected Grand Chaplain. Both are members of C, Gallup, New Mex.

Mrs. Alma Allen, T, Tampa, Fla., founder of the Adopt-a-mother-plan has been ill since Christmas and is at Safety Harbor, a health resort. News of the practice of her plan continues to come as she says "from far away countries, South America, England, Canada, Mexico, and others. Yes, the seed is sown — and will grow — perhaps delayed — but it is there — Who wrote? "The answer to our lives may be a thousand years hence."

The poem "Missing in Action" published on page 33, April issue of the RECORD was written by Mary T. Davis, Chapter H, Cambridge, Mass. We are sorry for the misspelling of her last name.

Ruth Graham (Mrs. George A.), Chapter P, Santa Fe, New Mexico, was recently elected State regent of D. A. R.

Mrs. Sam M. Wassell, C, Little Rock, Ark. was chosen by the Navy department to sponsor the light cruiser U. S. S. Little Rock when it was launched in May. The choice came upon recommendation of the mayor of Little Rock because of the family relationship to Com. Corydon M. Wassell, hero of Java.

Marriages

Carolyn Fargrave, O, Farmington, Iowa, to Sgt. Robert R. Rohdy, April 20, 1944.

Miss Dorothy E. Heister, CN, Denver, Colo., to Lt. (j.g.) Frederick Charles Broadway, Jr., USNR, April 29, 1944. At home 1340 Garfield St., Denver, Colo.

Miss Martha Tilson, N, South Bend, Ind., to Sgt. Everett R. Amos, Army Air Corps, April 1, 1944.

Miss Jeanne Grieson, CE, Savanna, Ill., to Joseph Beeler, April 29, 1944. At home Ridgeland Hotel Apts., 1734 E. 72 St., Chicago.

Miss Alice Palmer Pfahler, AZ, Evans-ton, Ill., to Lt. Dudley S. Tyler, March 16, 1944. At home Bend, Ore.

Miss Pauline Shepard, AN, Van Nuys, Calif., to Lt. James Douglas Sykes, April 23, 1944.

Miss Marjorie Burt, L, Kenmore, N. Dak., to Ross W. Porter, U. S. Navy, March 16, 1944. At home 1727 Belmont, Seattle, Wash.

Miss Elizabeth Dietz, DM, Lincoln, Neb., to 1st Lt. William H. Kibbie, May 6, 1944.

Miss Jane Chrismer, BJ, Yuma, Colo., to Mervin Paul Hale, March 29, 1944. Miss Chrismer is a WAVE, Sp. (T) 3/c, USNR, and located at Flora, Indiana.

Mrs. Alice Reinhold, U, St. Francis, Kan., to Leon E. Smith, April 9, 1944. Mrs. Smith is a cousin of a P. E. O. Founder, Alice Bird Babb.

Miss Betty Severance, AJ, Salem, So. Dak., to Dr. Don Matthiesen, U. S. N., June 26, 1943. At home, 5376 Wingo-hocking Heights, Philadelphia 44, Pa.

Miss Betty Louise Sheild, AJ, Salem, So. Dak., to Corporal John William Albers, March 4, 1944. The bride is the daughter of Mary C. Sheild (Mrs. Rex-ford) past president of South Dakota State Chapter.

Miss Betty Ruth Bishop, BZ, Elkader, Iowa, to Keach D. Johnson, April 2, 1944. At home, 205 E. Market St., Xenia, Ohio.

Miss Mary Jellison, BJ, Wilson, Kan-sas, to Mr. Dean Miller, U. S. N. R., March 25, 1944. At home, 881 Jackson, Memphis, Tenn.

Miss Mary Bess Myers, Q, Braymer, Mo. to Paul K. Kincaid, April 1, 1944.

Miss Martha June Sloop, G, Queen City, Mo., to Lt. Glen E. Downing, U. S. Army Air Corps, April 18, 1944.

Miss Barbara Mattes, DS, Odebolt, Iowa, to Warrant Officer Robert A. Mason, March 19, 1944.

Miss Hortense Armbruster, BT, Aurora, Ill., to Dr. Joseph E. Wadkins, March 15, 1944.

Miss Helen C. Peffers, BT, Aurora, Ill., to Lt. (j.g.) Richard L. Philipson, U. S. N. R., April 15, 1944.

Barbara Jo Wilson, AT, Tonganoxie, Kan. to James Abbey Borders Army of U. S. A., April 8, 1944.

Katherine Russell, BY, Boulder, Colo. to Ensign Christian Dixie, U. S. N., April 14, 1944.

Miss Betty Macy, H, East Orange, N. J. to Capt. William Emery Phillips Smith, April 1, 1944. At home, Temple, Texas.

Miss Patricia Ann de Lancey, H, New Orleans, La. to Charles B. Kayser, Staff Sergeant U. S. Army Air Corps, April 4, 1944.

Miss Barbara Wheeler, CH, Villisca, Iowa, to Capt. Robert Phillips, April 11, 1944.

Miss Dorothy Hartman, E, Vermillion, S. D. to Pfc. Gerhardt Ellwein, March 30, 1944.

Miss Carolyn Jean Dunbar, CW, Kirksville, Mo. to Thomas Elsworth Jarrett, April 1, 1944. At home Ken-nedy Apts., Kirksville, Mo.

Miss Charlotte MacDonald, G, Seattle, Wash. to Carle Harrison Malone, Au-gust 30, 1943.

Miss Virginia Cheener, G, Seattle, Wash. to Norman LaVern Woolworth, April 20, 1943.

Miss Josephine Ort, I, Wahoo, Neb., to Dr. M. D. Crossett, March 24, 1944. At home, Wahoo, Neb.

Miss Margaret Swayne, A, Chicago, Ill., to Valentine Herbert Christmann, April 12, 1944. At home, 1200 Lake Shore Drive, Chicago.

Miss Mary Elizabeth Bush, AQ, Grand Junction, Colo., to Leslie Burris Jr., March 19, 1944.

Miss Gretchen Buck, AZ, Creston, Iowa, to John Sumner Wiseman, Corporal United States Army Medical Corps, April 9, 1944. At home, 1346 Downing St., Denver, Colorado.

Miss Elinore Mullison, L, Albuquer-que, New Mex., to W. L. Mulford, March 25, 1944. At home, 111½ E. Santa Fe, Santa Fe, New Mexico.

Chapter Eternal

"There is another land that I look toward as I watch the sunset. I never have seen it. I never have seen anyone who has been there, but it has a more abiding reality than any of these lands which I do know — this land beyond the sunset — this land of immortality, this fair and blessed country of the soul."

—Robert J. Burdette

AUSTIN, Mrs. Virginia, first initiate EJ, Savanna, Mo. March 23, 1944, age 89 years.

BABCOCK, Mrs. Lennah E., CF, Nebraska City, Neb., April 14, 1944.

BALLINGER, Helen Josephine (Mrs. Adams), charter member and former president U, Keokuk, Iowa. Resident of Washington, D. C. since 1915.

BECKER, Mrs. Hester, AV, Pawnee City, Neb., April 21, 1944.

BETZ, Sue G., AJ, Cheney, Wash., April 29, 1944.

BOCOCK, Mrs. Luella C., CJ, Glendale, Calif., Feb. 27, 1944. Former member K, Calif.

BUTTERWORTH, Blanche Stewart (Mrs. C. W.), AI, Denver, Colo., Dec. 5, 1943.

CARTER, Helen (Mrs. W. L.), AC, St. John, Kansas, March 2, 1944.

COCHRANE, Mrs. Clara, CH, Villisca, Iowa, April 12, 1944.

COTTRELL, Mrs. Anna, G, Seattle, Wash., Dec. 1, 1943.

CUNDIFF, Cecile (Mrs. L. E.), HO, Riverside, California, Feb. 6, 1944.

DANKS, Mrs. Nellie P., first president Illinois State Chapter, B, Clinton, Ill., April 11, 1944.

DAVIS, Emma B. (Mrs. Sidney L.), AS, Berthoud, Colo., president of the chapter, on April 28, 1944.

DEWOLF, Ellen, DQ, Reinbeck, Iowa, Feb. 15, 1944.

FUGATE, Isabella D. (Mrs. M. A.), U, American Falls, Idaho, April 11, 1944. A member for 37 years.

GABBERT, Nellie A., Charter member EV, New London, Iowa, March 18, 1944.

GASSAWAY, Mrs. Oris, G, Seattle, Wash., Feb. 19, 1944.

GENEVA, Mrs. Ella, Y, What Cheer, Iowa, April 28, 1944, age 82 years.

GOBBLE, Mary M. (Mrs. L. T.), Chapter C, Fairfield, Iowa, April 6, 1944.

GREENWOOD, Alice M. (Mrs. R. B.), EY, Huntington Park, Calif., March 27, 1944.

HALL, Lenore (Mrs. I. O.), AG, Brook-field, Mo., April 24, 1944.

HARRIS, Ella E. (Mrs. C. F.), Q, Park River, N. Dak., April 5, 1944.

HARRISON, Mrs. Lillian D., charter member AN, Van Nuys, Calif., April 25, 1944.

HEARST, Miss Grace, FG, DeSoto, Mo., March 31, 1944.

HEMLEY, Mrs. Estella Bain, AD, Tren-ton, Mo., April 26, 1944.

HENRY, Edna, charter member, BG, Liver-more, Calif., Dec. 6, 1943.

HILPERT, Emma F. (Mrs. M. G.), O, Farmington, Iowa, April 13, 1944.

HUTCHINSON, Mrs. Florence, BT, Franklin, Neb., April 10, 1944.

KAUFFMAN, Allie (Mrs. E. N.), Q, Wymore, Neb., March 21, 1944.

LANGLEY, Emily S. (Mrs. T. M.), AD, Superior, Wis., April 15, 1944.

LITTLE, Mrs. Rebecca, DT, Mt. Vernon, Iowa, March 30, 1944.

MANN, Gertrude (Mrs. T. M.), Q, Wy-more, Neb., Dec. 7, 1943.

MARTIN, Mrs. Ida, AN, Albany, Mo., March 28, 1944.

MASON, Mrs. Minnie M., charter mem-ber AX, South Pasadena, Calif., March 23, 1944.

MITCHELL, Dora (Mrs. E. H.), EH, Des Moines, Iowa, April 17, 1944.

MOULDS, Eva (Mrs. Will), BO, Lake City, Iowa, Feb. 23, 1944.

PEASE, Marion (Mrs. C. L.), CI, Pasa-dena, Calif., Dec. 23, 1943.

PIERCE, Myrtle (Mrs. C. H.), GT, Winfield, Iowa, April 23, 1944.

RANKEN, Cora Hill (Mrs. T. B.), AX, Chicago, Ill., April 29, 1944.

RUTLEDGE, Miss Bertha, C, Los Angles, Calif., Feb. 14, 1944.

SCHNEIDER, Grace Hoyt (Mrs. F. W.), BD, West Union, Iowa, Dec. 30, 1943. Charter member, initiated 1903.

SHETLER, Clara (Mrs. U. S.), charter member AC, St. John, Kansas, April 25, 1944.

SHIELDS, Minnie L. (Mrs. V. H.), char-ter member EV, New London, Iowa, May 5, 1944.

SKEELS, Mrs. Helen, DH, Sioux City, Iowa, March 29, 1944.

SMITH, Mrs. May Hollister, BE, Spirit Lake, Iowa, March 5, 1944.

SMITH, Mayme (Mrs. Claude M.), E, Spokane, Wash., April 29, 1944. For-mer member Chapter P, Burlington, Iowa.

STERN, Mabelle E. (Mrs. Worthy P.), B, District of Columbia, April 21, 1944.

TAYLOR, Miss Hilda, Charter member AG, Oshkosh, Wis., May 4, 1944.

THOMAS, Miss Lenore F., April 24, 1944. A member of Chapter C, Fair-field, Iowa.

THORNE, Mrs. Hilda, C, Los Angeles, Calif., April 6, 1944.

TOWNSEND, Bess K., AJ, Salem, So. Dak., Nov. 1, 1943.
 TURNEY, Mrs. Belle S., HA, Fairfield, Iowa, Dec. 1, 1943.
 WARDELL, Minnie (Mrs. R. R.), AW, Grand View, Wash., March 23, 1944.
 WALKER, Mayme (Mrs. D. W.), Chapter G, Sapulpa, Okla., April 25, 1944.
 WESTFALL, Miss Kathryn, ER, Strawberry Point, Iowa, April 9, 1944.
 WILSON, Luna (Mrs. W. H.), AG, Brookfield, Mo., April 25, 1944.
 WINTER, Ravena L. (Mrs. T. Z.), IF, Los Angeles, Calif., April 20, 1944.
 WORTHEY, Eloise Whitney, charter member and former president CN, Winnetka, Ill., April 28, 1944.
 YOUNG, Anna Ver Steeg (Mrs. James), U, Keokuk, Iowa, April 22, 1944.
 ZOOK, Mrs. Laura, K, Miles City, Mont., May 8, 1944.

Officers in Local Chapter Groups

SIoux CITY (IOWA) RECIPROCITY BOARD

Pres.—Vivian Wolle (Mrs. W. C.), 3301 Jennings St.
 Vice Pres.—Gertrude Kindig (Mrs. J. W.), 3800 Ridge Ave.
 Sec.—Treas.—Nellie S. Cooper (Mrs. A. C.), 2715 Dearborn St.

GLENDALe (CALIF.) RECIPROCITY BUREAU

Pres.—Lila Guy, 2523 Hollister Terrace 6.
 Vice Pres.—Norabelle Phleger, 309 Myrtle St. 3.
 Sec.—Hazel Wadsworth, 1415 Dorothy Drive 2.
 Treas.—Mabel Hill, 1408-F Fifth St. 1.

PASADENA RECIPROCITY BUREAU

Pres.—M. Frances Collins (Mrs. R.), 553 East Walnut St.
 Vice-Pres.—Pearl Culver (Mrs. G. M.), 1591 Oakdale St.
 Sec.—Ruth S. Keyes (Mrs. Edwin F.), 400 South Hill Ave.
 Treas.—Hazel Kemis (Mrs. Clark L.), 1893 East Mountain St.

SANTA BARBARA RECIPROCITY BUREAU

Pres.—Ann Geib (Mrs. George), 12 W. Pedregosa St.
 Vice-Pres.—Marie Langlie (Mrs. Paul), 2417 Chapala St.
 Sec.—Treas.—Elenora F. Lloyd (Mrs. Robert), 201 Calle Granada.

CHICAGO PRESIDENTS' ROUND TABLE

Pres.—Daisy Minor (Mrs. H. S.), 9434 Justine St.
 Vice-Pres.—Esther T. Carrick (Mrs. P. M.), 717 Elmore Ave., Park Ridge.
 Rec. Sec.—Betty Inman (Mrs. J. F.), 718 S. Scoville Avenue, Oak Park.
 Cor. Sec.—Ruby S. McCallister (Mrs. J. M.), 8100 S. Blackstone Avenue.
 Treas.—Anabel Houghton (Mrs. R. L.), 335 N. Grove Avenue, Oak Park.
 Chaplain—Beatrice S. Jeffords (Mrs. E. M.), 1018 Lake Avenue, Wilmette.
 Unaffiliated Chairman appointed—Helen J. Kadyk (Mrs. D.), 1172 Hamp-tondale Road, Winnetka.

CORVALLIS (ORE.) RECIPROCITY COMMITTEE

Chair.—Mrs. Carolyn Sullivan.
 Sec.—Mrs. Eleanor Oehler.
 Director of Publicity—Mrs. Kate Jameson.

DENVER ADVISORY BOARD

Chair.—Grace Delzer (Mrs. Carl), 1200 So. Gaylord St. 10.
 Sec.—Katherine Eames (Mrs. D. C.), 1306 Humboldt St., Apt. 6, 6.
 Treas.—Leah Hoover (Mrs. A. S.), 575 So. Downing St. 9.

HAWAII RECIPROCITY BUREAU

Pres.—Dorothy Griffith (Mrs. R. B.), 3021 Manoa Rd., Honolulu.
 Sec.—Ellen Le Bourdais (Mrs. Pierre), 1995 Wilhelmina Rise, Honolulu.
 Treas.—Helen Cunningham (Miss), 2761 Puwhoma, Honolulu.

SAN DIEGO RECIPROCITY BUREAU

Pres.—Teresa Hardie (Mrs. R. C.), 4626 El Cerrito Drive 5.
 Vice Pres.—Zoe Upp (Mrs. E. C.), 8376 Lemon Ave., La Mesa, Calif.
 Sec.—Sedona Nelson (Mrs. S. A.), 2334 Hickory St. 3.
 Treas.—Ethel Dick (Mrs. Rex), 1744 First Ave. 1.

P. E. O. PRESIDENTS' ROUND TABLE WASHINGTON, D. C.

Pres.—Mrs. Lucie Claughton, The Wyoming.
 Vice Pres.—Mrs. Celia Chatelain, 6101 Fifth St. N. W.
 Sec.—Treas.—Mrs. May Fales, 1915 Elkhart St., Silver Springs, Md.
 Cor. Sec.—Mrs. Genevieve Gongwer, 101 Aspen St., Chevy Chase, Md.

Notices

Send all notices to Editor of P. E. O. RECORD, 2842 Sheridan Road, Chicago 14, Ill.

Single notices not involving money or profit to sender are free. Groups are allowed one free notice annually.

For all repeated notices, twenty-five cents per full or part of printed line will be charged for six or more insertions, thirty-five cents per line or part of line for less than six insertions.

Please give specific number of insertions desired.

Bill will be sent after notice appears in RECORD. Count your lines.

P. E. O. RECORD Board of Trustees
 Nell F. Stevenson (Mrs. James)
 Chairman

The Des Moines Iowa Bureau luncheon, second Tuesday each month at Younker's Tea Room. All unaffiliated P. E. O.'s cordially welcome.

Corvallis, Ore. reciprocity no-host luncheon, Hotel Benton, fourth Friday every month. All unaffiliated welcome.

Reciprocity Bureau of Hawaii meets May 30, June 28, July 27, Aug. 28, Sept. 25, Oct. 31. Tea, 3:30. All P. E. O.'s welcome. Information, Dorothy Griffith (Mrs. R. B.), 3021 Manoa Rd., Honolulu 54, telephone 98690.

Unaffiliated living in or near Columbus, Ohio please contact Mrs. D. W. L. Polley, 3037 Fishinger Rd.

New York City Cooperative Board monthly meeting 11 A. M. first Thursday Woman's Club house, John Wanamaker's October to May inclusive. Luncheon 12:30. P. E. O.'s welcome.

Chicago Round Table luncheon first Wednesday each month at 12:00 o'clock Carson Pirie's Georgian Room.

Reader Ads

AS WE WERE SAYING

To fill requests for the book *As We Were Saying* by Winona E. Reeves, Chapter A, Chicago has ordered an additional 300 copies. The book is bound in French blue cloth, price \$1.25 postpaid. Address Mrs. Beulah M. Thornton, West Shore Park, Mundelein, Ill.

Quiz on new Constitution by Bertha Clark Hughes, \$1.00, Marie Polian, Chapter M, 2420 S. 32nd Ave., Omaha, Neb.

UPLIFT FOR WAR MOTHERS

Order "DEAR MOM," a beautiful booklet of Poems, Meditations, Letters, Prayers; a message of courage and comfort for all war mothers and wives. A lovely gift. 50c. W. O. Rogers, 401 S. High, Denver 9, Colo.

After vacation, the program invasion. Be armed with papers and reviews. Myrtle E. Pullen, 1707-8th St., Bremerton, Wash.

TYPICAL "TREASURER'S REPORT"



\$75.
 raised for our
TREASURY
 in 2 short days



THE TREASURER'S REPORT is the most important part of your meetings. Today, many proud Treasurers of church groups and auxiliaries are rising to their feet to eagerly report BIG EASY FUNDS RAISED BY SELLING THE "FLUFFY DUSTER." One group of 50 members raised \$75.00 in two days, by giving each woman a quota to sell; one she bought for herself, and sold several others to neighbors, friends. "Fluffy Duster" ideal for brushing walls, ceilings. Sturdy chenille. Washes wonderfully. Lasts years. BAR-GAIN at 99c; costs you \$9.48 per dozen, sells for \$11.88 per dozen, netting your Treasury \$2.40 profit since I pay postage. Mail coupon below for TRIAL DOZEN. Your profit is GUARANTEED, by America's leading "specialist" in FUND-RAISING plans!

ROBERT GILLMORE GILLMORE

104 Crestmont St., Reading, Pa. PEO-R

Mr. Gillmore: We'll "test" a dozen "Fluffy Dusters" without sending any cash. If they don't sell easily, we'll ship them back collect, under your special "PAY-THE-PROFIT" GUARANTEE which means you'll forward us a check for \$2.40 — our profit on 12 dusters.

Name _____
 Organization _____
 Street _____
 City _____ State _____

STATE, PROVINCE AND DISTRICT OFFICERS

NEBRASKA

Pres., Marion H. Crites (Mrs. F. A.) . . . 246 Mears St., Chadron
1st V.-P., Eva M. Curtiss (Mrs. J. E.) . . . 1615 S. 20th, Lincoln
2nd V.-P., Rebecca P. Lee (Mrs. E. J.) . . . 1617 N. Colson, Fremont
Org., Florence Stewart (Mrs. C. M.) . . .
Rec. Sec., Helen Riddell (Mrs. John) . . . 625 E. 7, York
Cor. Sec., Bessie T. Buchanan (Mrs. F. N.) . . .
Treas., Irene S. Van Brunt (Mrs. Winslow) . . . 5116 Burt St., Omaha

IOWA

Pres., Mrs. Elizabeth M. Young . . . 218 Alta Vista, Waterloo
1st V.-P., Mrs. Katharine C. Hughes . . . 114 E. Third Street, Storm Lake
2nd V.-P., Mrs. Jean Turnbull . . . 136 Forest Road, Davenport
Org., Mrs. Beatrice Lee Thomas . . . Cottage Gr. Ave., Cedar Rapids
Rec. Sec., Mrs. Beulah G. Snyder . . . 1010-36th St., Des Moines
Cor. Sec., Mrs. Jane E. Stinson . . . 722 First St. N.W., Mason City
Treas., Mrs. Sara S. Smythe . . . 421 N. 18th Street, Fort Dodge

MISSOURI

Pres., Vera Lou Biggerstaff (Mrs. J. W.) . . . 1120 Elm St., Chillicothe
1st V.-P., Ruby E. Reals (Mrs. W. H.) . . . 7032 W. Moreland, St. Louis
2nd V.-P., Hattie G. Holland (Mrs. E. R.) . . . 937 N. Main, Poplar Bluff
Org., Mabel C. James (Mrs. E. F.) . . . 6835 Paseo, Kansas City
Rec. Sec., Miss Ruth Fitzgerald . . . 312 West South St., Warrensburg
Cor. Sec., Minnie J. Springer (Mrs. P. B.) . . .
Treas., Doris McKay Scott (Mrs. L. L.) . . . 4014 Terrace Ave., St. Joseph
401 Cornelia Ave., Glendale

COLORADO

Pres., Mrs. Marguerite P. Mayer . . . 1009 Grant, Denver
1st V.-P., Mrs. Rena Mary Taylor . . . Palisade
2nd V.-P., Mrs. Glaphy Brown . . . 1535 Monaco Pkwy., Denver
Org., Mrs. Helen M. White . . . 708 F St., Salida
Rec. Sec., Mrs. Mildred E. McCall . . . 316 Bowman Ave., Windsor
Cor. Sec., Mrs. Margaret Aldom . . . 5330 E. 17 Ave., Denver 7
Treas., Clara Jacobs . . . Jordan Apts., Pueblo

ILLINOIS

Pres., Geneva C. Schroder (Mrs. Wm. B.) . . . 2432-19 Ave., Rock Island
1st V.-P., Vivian Rutter (Mrs. W. A. C.) . . . 3800 Lake Shore Dr., Chicago
2nd V.-P., Louise R. Waddell (Mrs. G. R.) . . . 605 S. Kreitzer Ave., Bloomington
Org., Bessie S. Ballow (Mrs. L. B.) . . . 195 E. Greenwood Ave., Jacksonville
Rec. Sec., Hazel V. Zeisel (Mrs. E. C.) . . . 104 S. Ashland Ave., La Grange
Cor. Sec., Jennie H. Rugh (Mrs. W. E.) . . . 1423 W. Forest Ave., Decatur
Treas., Blanche Lee (Mrs. R. L.) . . . 214 Sixth St., Lockport

KANSAS

Pres., Grace W. Simpson (Mrs. Stuart T.) . . . 6038 So. Maple, McPherson
1st V.-P., Vivian Rutter (Mrs. W. A. C.) . . . 1216 Mulvane, Topeka
2nd V.-P., Stella Clapp (Mrs. A. L.) . . . 1109 Kearney, Manhattan
Org., Christine Davis (Mrs. H. O.) . . . 940 North Yale, Wichita 6
Rec. Sec., Grace Banta Dodd (Mrs. I. W.) . . .
2617 West 48th Terrace, Kansas City 3
Cor. Sec., Virginia Cleland (Mrs. G. L.) . . . 1017 North Fifth, Atchison
Treas., Mildred H. Raney (Mrs. R. M.) . . . Osborne

CALIFORNIA

Pres., Louise H. Bailey (Mrs. John Sherman) . . .
472 Woodbury Road, Glendale 6
1st V.-P., Anna C. Locey (Mrs. H. C.) . . .
719 North Willis Street, Box 168, Visalia
2nd V.-P., Ina R. Fox (Mrs. A. E.) . . . 706 No. Bedford Dr., Beverly Hills
Org., Bessie M. Stoner (Mrs. S. C.) . . .
332 North California Street, San Gabriel
Rec. Sec., Eleanor B. Nichols (Mrs. F. M.) . . . 2914 Millsbrae Avenue, Oakland 2
Cor. Sec., Mabel Jessup (Mrs. J. G.) . . .
1537 Comstock Avenue, Los Angeles 24
Treas., Rosemary Spear (Mrs. J. L.) . . . 1001 St. Helena Ave., Santa Rosa

WASHINGTON

Pres., Winifred Rankin (Mrs. E. L.) . . . 507 E. Chestnut, Yakima
1st V.-P., Lena A. Bingham (Mrs. A. H.) . . .
316 Talcott St., Sedro Woolley
2nd V.-P., Jody W. Ackerley (Mrs. James) . . .
6424 E. Greenlake Way, Seattle 3
Org., Rhea Pinckney (Mrs. J. M.) . . . 109 S. G St., Aberdeen
Rec. Sec., Bess F. Butler (Mrs. J. E.) . . . Waitsburg
Cor. Sec., Thelma R. Davies (Mrs. Paul G.) . . .
1115 E. Overhill Road, Spokane 10
Treas., Lois M. Dehn (Mrs. Wm. M.) . . . 2010 E. 50th, Seattle

OKLAHOMA

Pres., Margaret B. Anderson (Mrs. Homer S.) . . . 218 Va. Ave., Ponca City
1st V.-P., Alice Sanders (Mrs. H. M.) . . . 508 May Ave. Rte. 2, Okla. City
2nd V.-P., Ora B. Floyd (Mrs. R. L.) . . . 310 E. Cecil St., Wynoka
Org., Mary R. Bell (Dr.) . . . O. C. W., Chickasha
Rec. Sec., Jane Donahue (Mrs. M. P.) . . . 1510 E. 35th, Tulsa
Cor. Sec., Margaret Lillibridge (Mrs. H. E.) . . . 809 W. Wabash
Treas., Gladys M. Jones (Mrs. S. A.) . . . 612 E. Okla., Guthrie

OREGON

Pres., Mary Ruth King (Mrs. J. A.) . . . 1606 N. E. Buffalo St., Portland 11
1st V.-P., Helen L. Kaser (Mrs. E. N.) . . . 715 Hawthorne Ave., Grants Pass
2nd V.-P., Maurine Wisenand (Mrs. B. E.) . . . 954 Broadway, Bend
Org., Frances Reynolds (Mrs. Earl C.) . . .
Rt. 2, Box 571, Klamath Falls
Rec. Sec., Leah French (Mrs. D. W. Jr.) . . . 2631 First St., Baker
Cor. Sec., Oveta M. Barnes (Mrs. R. R.) . . .
2215 N. E. 49 Ave., Portland 13
Treas., Lois New McElveny (Mrs. D. P.) . . .
2235 Northeast 37th Avenue, Portland (13)

MINNESOTA

Pres., Mildred McCune (Mrs. G. E.) . . . 155 Homewood Dr., Fairmont
1st V.-P., Miss Ellen Hall . . . 1929 James Ave. South, Minneapolis
2nd V.-P., Hazel Caldwell (Mrs. G. J.) . . . 1617 Summit Ave., St. Paul
Org., Hattie H. Dickinson (Mrs. W. A.) . . . 1487 Goodrich Ave., St. Paul
Rec. Sec., Irene H. Burlington (Mrs. I. O.) . . .
136-10th Avenue South, South St. Paul

MAOI NOING
VONVAAT SUH
VMOI-80

NORTH DAKOTA

Pres., Nelle G. Thornton (Mrs. J. M.) . . . 804 Beacon St., Minot
1st V.-P., Marion G. Cary (Mrs. C. R.) . . . 309 Third Ave. N.W., Mandan
2nd V.-P., Miss Vera E. Bollinger . . . 217 Pk. Ave., Valley City
Org., Carrie L. Brunsdale (Mrs. C. N.) . . . Mayville
Rec. Sec., Jennie L. Franta (Mrs. E. J.) . . . Langdon
Cor. Sec., Margaret H. Westley (Mrs. M. D.) . . . Cooperstown
Treas., Iva M. Fillebrown (Mrs. A. Ross) . . . 1337 Fourth St. N., Fargo

IDAHO

Pres., Marguerite Phippeny (Mrs. G. O.) . . . 916-17 St., Coeur d'Alene
1st V.-P., Edith Gooding (Mrs. E. G.) . . . Shoshone
2nd V.-P., Ora Burnham (Mrs. Z. E.) . . . Meridian
Org., Marion Berg (Mrs. J. E.) . . . 301 Cedar St., Wallace
Rec. Sec., Mary Ruth Sampson (Mrs. W. G.) . . . Hansen
Cor. Sec., Esther Henry (Mrs. W. R.) . . . Grangeville
Treas., Esther Bratton (Mrs. H. H.) . . . 1015-10 Ave., Lewiston

SOUTH DAKOTA

Pres., Ruth K. Caille (Mrs. Earle L.) . . . 2019 Pendar Lane, Sioux Falls
1st V.-P., Maylou R. Amunson (Mrs. Swen A.) . . . Mobridge
2nd V.-P., Margaret Lamont (Mrs. M. B.) . . . 515 Arch St., Aberdeen
Org., Henrietta Smiley (Mrs. J. C.) . . . 908 Main St., Deadwood
Rec. Sec., Lereña F. Levinger (Mrs. H. W.) . . . 1901 Douglas Ave., Yankton
Cor. Sec., Hazel B. Hoy (Mrs. Carl B.) . . . 614 East Main St., Vermillion
Treas., Mary E. Chivers (Miss) . . . Winner

WISCONSIN

Pres., Leone B. Schroeder (Mrs. H. J.) . . . 847 Union St., Stevens Point
1st V.-P., Elsie M. Brennan (Miss) . . . 511 W. Elm St., Lancaster
2nd V.-P., Pearl D. Van Hecke (Mrs. Max) . . . 707 W. Main St., Merrill
Org., Amy B. Waterpool (Mrs. W. F.) . . . 130 Hattie St., Marinette
Rec. Sec., Nelle A. Farnam (Miss) . . . 4141 W. Main Dr., Milwaukee
Cor. Sec., Kathlyn J. Oates (Mrs. A. R.) . . . 201 W. Fourth St., Marshfield
Treas., Pearl Wheeler (Mrs. C. H. E.) . . . 503 W. Main St., Platteville

MICHIGAN

Pres., Imogene L. Fisher (Mrs. Gale H.) . . . 2130 Arvon Lane, Birmingham
1st V.-P., Nina K. Dahlstrom (Mrs. Carl) . . . 1304 Horman Ct., Ann Arbor
2nd V.-P., Nellie S. Burgess (Mrs. B. P.) . . . 3255 Hazelwood, Detroit 6
Org., Helen M. Kopka (Mrs. M. A.) . . .
32 Devonshire Rd., Pleasant Ridge
Rec. Sec., Ruth G. Brahm (Mrs. H. V.) . . . 14802 Coyle Ave., Detroit 27
Cor. Sec., Helen M. Palmer (Mrs. Norris B.) . . .
19199 Pennington Dr., Detroit 21
Treas., Helen M. Lemmon (Mrs. C. W.) . . . 211 Biddle Ave., Wyandotte

WYOMING

Pres., Alice Henderson (Mrs. H. R. Jr.) . . . 2920 Carey Ave., Cheyenne
1st V.-P., Margaret Rice (Mrs. F. O.) . . . 1727 Rainbow St., Laramie
2nd V.-P., Gladys Beeson (Mrs. J. K.) . . .
553 Highland Ave., Sheridan
Org., Marjorie Jensen (Mrs. A. K.) . . . 408 E. 22 St., Cheyenne
Rec. Sec., Vera S. Plinger (Mrs. R. I.) . . . Newcastle
Cor. Sec., Bessie G. Sweitzer (Mrs. P. F.) . . . 1226-11 St., Cody
Treas., Georgia Daniels (Mrs. T. C.) . . . Douglas

MONTANA

Pres., Bertha Dodds (Mrs. P. F.) . . . 814 Gilbert, Helena
1st V.-P., Olive Laird (Mrs. C. W.) . . .
2nd V.-P., Lillian Hanson (Mrs. L. L.) . . . Glasgow
Org., Anne Mather (Mrs. W. S.) . . . Lewistown
Rec. Sec., Mabel H. Kyle (Mrs. W. D.) . . . 1215 W. Steele, Butte
Cor. Sec., Eva T. Brandt (Mrs. R. O.) . . . 503 Locust, Anaconda
Treas., Gertrude F. Cooper (Mrs. C. E.) . . . 917-1st St., W. Roundup

INDIANA

Pres., Helen Hillman (Mrs. Marion) . . . 1516 Marquette Blvd., South Bend
1st V.-P., Margaret Stoner (Mrs. S. M.) . . .
120 Bloomington St., Greencastle
2nd V.-P., Eos P. Richardson (Mrs. John T.) . . .
1744 W. Jefferson Rd., Kokomo
Org., Dorothy E. Thomas (Mrs. R. J.) . . .
610 Dodge St., W. Lafayette
Rec. Sec., Irene Isfalt (Mrs. E. R.) . . . Colfax
Cor. Sec., Vinnie M. Kilby (Mrs. Paul) . . .
5772 Central Ave., Indianapolis
Treas., Mary Ann Jefferson (Mrs. John H.) . . . 3146 N. Ill., Indianapolis

FLORIDA

Pres., Eunice Barnes (Mrs. N. Z.) . . . 827 Lexington St., Lakeland
1st V.-P., Genevieve McNinch (Mrs. J. S.) . . .
528 Sixth St. No., St. Petersburg
2nd V.-P., Ruth Whitaker (Mrs. Tom) . . . 3405 Almeria Ave., Tampa 6
Org., Dorothy L. Phipps (Mrs. C. G.) . . . 1210 Margaret, Gainesville
Rec. Sec., Martha Hall (Mrs. W. C.) . . . 420 Magnolia Ave., Orlando
Cor. Sec., Margaret H. Gahan (Mrs. J. B.) . . . 415 Anderson St., Orlando
Treas., Martha Louise Henderson (Mrs. G. M.) . . . Box 212, Delray Beach

OHIO

Pres., Adda Belle Maynard (Mrs. H. R.) . . . 2000 Beverly Road, Columbus
1st V.-P., Letitia Carroll (Mrs. F. E.) . . . 212 Wiltshire Blvd., Dayton
2nd V.-P., Miss Olive Cummings . . . 117 Buttonwood Ave., Bowling Green
Org., Florence R. Townsend (Mrs. A. J.) . . . 3205 Kylemore Rd., Toledo
Rec. Sec., Olive R. Patterson (Mrs. L. A.) . . .
1298 N. Howard Street, Akron
Cor. Sec., Esther B. Samuel (Mrs. John O.) . . .
2061 Morrison Ave., Lakewood
Treas., Gladys Tanner (Mrs. C. R.) . . . 219 River View Park Dr., Columbus

NEW YORK

Pres., Beatrice H. Leach (Mrs. Raymond H.) . . . 1781 Riverside Dr., New York
1st V.-P., Annabel A. Norvell (Mrs. George W.) . . . 88 Oxford Rd., Albany
2nd V.-P., Gladys E. Kivell (Mrs. Wayne A.) . . . 16 Field Court, Bronxville
Org., Kathryn S. Wilcox (Mrs. G. E.) . . . Highland
Rec. Sec., Eleanor B. Pehl (Mrs. Howard B.) . . . 37 Beverley Pkwy., Freeport

Cor. Sec., Fern Reissig (Mrs. Arthur J.) . . .
105 Delaware Road, Kenmore
Treas., Lucretia Moeller (Mrs. Henry D.) . . .
215 West 90 St., New York City

TEXAS

Pres., Jenny L. Erlandson (Mrs. Geo. E.) . . . 1008 Western, Amarillo
1st V.-P., Martha R. Bennett (Mrs. C. M.) . . . 3612 Normandy, Dallas
2nd V.-P., Katherine Newman (Mrs. L. Gene) . . .
1658 Danville, Houston 16
Org., Leila Lilly (Mrs. C. A.) . . . 2425 Medford Ct., Ft. Worth
Rec. Sec., Elizabeth Worthington (Mrs. L. G.) . . .
1808 Niles Ro., Austin 21
Cor. Sec., Ruth Buttry (Mrs. Ted) . . . 250 Melrose, Corpus Christi
Treas., Willie M. King (Mrs. W. W.) . . . 2117 N. Locust, Denton

NEW MEXICO

Pres., Ada Dalies (Mrs. Paul B.) . . . Box 411, Belen
1st V.-P., Anna Mitchell (Mrs. J. B.) . . . Box 1138, Raton
2nd V.-P., Iris Bonner (Mrs. R. H.) . . . 214 S. E. Arizona, Portales
Org., Alice Hall (Mrs. Jas. A.) . . . 721 Rencher, Clovis
Rec. Sec., Cathryn Parker (Miss) . . . P.O. Box 24, Santa Fe
Cor. Sec., Josephine Hanlon (Mrs. L. E. Jr.) . . . Willard
Treas., Alice Erskine (Mrs. O. B.) . . . 416 So. Third, Tucumcari

CANADA

Province Chapter, British Columbia
Pres., Alice Smith (Mrs. H. L.) . . . 3052 Admiral's Rd., Victoria
1st V.-P., Lily Munro (Mrs. D. D.) . . . 1998 Matthew's Ave., Vancouver
2nd V.-P., Mary Dawe (Mrs. A. W.) . . . 321 Fifth Ave., New Westminster
Org., Lillian Morgan (Mrs. A. I.) . . . 1237 Howe St., Vancouver
Rec. Sec., Helen Hurm (Mrs. H. S.) . . . 1073 Deal St., Victoria
Cor. Sec., Hazel Whitley (Mrs. P. N.) . . .
5810 Willingdon Place, Vancouver
Treas., Marjory Fraser (Mrs. D.) . . . 103 Sixth St., Revelstoke

ARIZONA

Pres., Winona Graves (Mrs. W. E.) . . . 1148-9 St., Douglas
1st V.-P., Lelia V. Bennett (Mrs. Paul) . . . 602 Valley Bk. Bldg., Tucson
2nd V.-P., Kathleen Curry (Mrs. R. C.) . . . 701 W. Oak, Winslow
Org., Ina J. Crawford (Mrs. A. M.) . . . 240 Park Ave., Prescott
Rec. Sec., Helen B. Hackett (Mrs. M. J.) . . . 608 S. Ave., Yuma
Cor. Sec., Winne E. Fram (Mrs. A. J.) . . . RFD 1, Box 124, Tempe
Treas., Adelaide Lusby (Mrs. E. O.) . . . 1134 W. Willetta, Phoenix

ARKANSAS

Pres., Elizabeth F. Moore (Mrs. D. M.) . . .
506 Vandeventer, Fayetteville
1st V.-P., Glenna D. Brothers (Mrs. E. Q.) . . . 1405 S. Taylor, Little Rk.
2nd V.-P., Dorcas Patterson (Mrs. G. O.) . . . 402 Fillmore, Clarksville
Org., Geneva Colville (Mrs. Geo.) . . . 609 North Fifth St., Paris
Rec. Sec., Byrle Welman McKinney (Mrs. W. W.) . . .
822 S. Pine St., Harrison
Cor. Sec., Martha England (Mrs. F. S.) . . . 1521 Walnut, Blytheville
Treas., Kathryn Eldridge (Mrs. G. E.) . . . 109 Second S. E., Bentonville

DISTRICT OF COLUMBIA

Pres., Margaret Buckles (Mrs. W. M.) . . .
1365 Kennedy St., N.W., Washington 11
1st V.-P., Miss Jessie O. Elting . . .
1473 Harvard St., N.W., Washington 9
2nd V.-P., Miss Alma Barry . . .
2100 Eye St., N.W. Apt. 205, Washington 7
Org., Anne M. Wilkinson (Mrs. L. A.) . . .
4801 Connecticut Ave., N.W., Apt. 804, Washington 8
Rec. Sec., Opal Brewster (Mrs. R. E.) . . . 1531 Vanhove, Arlington, Va.
Cor. Sec., Cora Edgington Coombs (Mrs. Danl S.) . . .
6417-33rd St., N.W., Washington 15
Treas., Josephine Stansfield (Mrs. Edgar A.) . . .
5204 Hampden Lane, Bethesda 14, Md.

UTAH

Pres., Jessie S. Gerrish (Mrs. F. E.) . . .
1180 East 13th South, Salt Lake City
1st V.-P., Helen L. Abbott (Mrs. J. T.) . . . 2414 Taylor Ave., Ogden
2nd V.-P., Eva E. Durkee (Mrs. F. D.) . . .
1720 Yalecrest Ave., Salt Lake City
Org., Della Lancaster (Mrs. Willis E.) . . . 2811 Eccles Ave., Ogden
Rec. Sec., Nelle M. Smith (Mrs. Geo. A.) . . . 761-7th Ave., Salt Lake City
Cor. Sec., Virginia L. Ross (Mrs. Wm. Crosby) . . .
1382 Westminster Ave., Salt Lake City
Treas., Virginia Fraser . . . 178 A Street, Salt Lake City

PENNSYLVANIA

Pres., Inez B. Showers (Mrs. Geo. D.) . . . 911 Broadway, Juniata, Altoona
1st V.-P., Yolande C. Judge (Mrs. Wade) . . . 47 College Ave., Mansfield
2nd V.-P., Olivia Griffiths (Miss) . . . 526 W. Washington St., Newcastle
Org., Ellen Johnston (Mrs. D. M.) . . . 2407 Poplar Rd., Merwood Park
Rec. Sec., Mildred S. Keesey (Mrs. V. P.) . . .
1137 Lindale Ave., Drexel Hill
Cor. Sec., Elizabeth C. Titzel (Mrs. Wm. J.) . . .
4403 Center Ave., Pittsburgh
Treas., Helen Yeomans (Mrs. Paul H.) . . . 434 State Street, Lancaster

MASSACHUSETTS

Pres., Vallie F. Owens (Mrs. A. W.) . . . 21 Hastings Rd., Belmont
1st V.-P., Lucy C. Dickey (Mrs. G. C.) . . . 28 Bay State Road, Belmont
2nd V.-P., Paulina A. Stearns (Mrs. H. B.) . . . 38 Temple St., Arlington
Org., Esther B. Card (Mrs. P. W.) . . . 152 Crosby Rd., Arlington
Rec. Sec., Irene J. Sloanaker (Mrs. H. L.) . . . 65 Bow Rd., Belmont
Cor. Sec., Margaret D. Dittmore (Mrs. D. C.) . . .
503 Beacon St., Chestnut Hill
Treas., Cora E. MacKenzie (Miss) . . . 215 Auburndale Ave., Auburndale

NEW JERSEY

Pres., Nina T. Hughes (Mrs. A. L.) . . .
568 Highland Ave., Upper Montclair
1st V.-P., Elizabeth S. Butcher (Mrs. O. L.) . . .
150 S. Clinton St., East Orange
2nd V.-P., Cleo Scott Findley (Mrs.) . . .
Livingston Park, New Brunswick
Org., Uretta A. Hinkhouse (Mrs. P. M.) . . . 746 E. Clark Pl., Orange
Rec. Sec., Virginia B. Cliff (Mrs. A. W.) . . . 6 Bodwell Ter., Milburn
Cor. Sec., Florence S. Anderson (Mrs. O. A.) . . .
31 Oakwood Ave., Upper Montclair
Treas., Lois G. Lippitt (Mrs. W. O.) . . .
259 Kinderkamack Rd., Westwood